



17/131-133 Rivett Street, Hackett




## Tranquil and Convenient.

Tucked into the leafy heart of Hackett and bordered by the serene backdrop of Mount Majura's foothills, this inviting two-bedroom apartment is a peaceful retreat offering the best of nature and city living.

Just across the road from the local Hackett shops and mere minutes from everything good Canberra's inner north offers, the location is ideal for those seeking both community and convenience. Whether you're grabbing a coffee at the local café, shopping for groceries, or heading into the city, everything you need is close by - including excellent public transport options.

The apartment has been updated over time featuring a spacious open-plan layout designed for relaxed, low-maintenance living. The light-filled interior includes an updated kitchen with ample bench and cupboard space, electric cooking. The bathroom is practical with a shower, toilet and vanity.

Surrounded by walking and cycling trails, local reserves, and only a short stroll to local schools and shops, this home is perfect for nature lovers, first-home buyers, or investors looking to secure a property in a tightly held and sought-after area.

2  1  1 

**FOR SALE**  
\$349,000+

### AGENTS

Andrew Grenfell  
0424 858 529  
andrew.grenfell@ljhcanberracity.com.au

### AGENCY

LJ Hooker Canberra City  
(02) 6249 7700

All information contained therein is gathered from relevant third parties sources.  
We cannot guarantee or give any warranty about the information provided.  
Interested parties must rely solely on their own enquiries.

 **LJ Hooker**

## Features:

- 2 well-sized bedrooms
- 1 bathroom with shower
- 1 undercover car port
- Washing machine fixture in the kitchen
- Sturdy double brick construction
- Updated kitchen with electric cooktop
- Positioned directly across from Hackett shops
- Backing onto nature reserves and walking tracks
- Just minutes to Dickson, Mount Majura, and Mount Ainslie
- Excellent access to public transport

Internal: 50.4m<sup>2</sup>

Energy Efficiency Rating: 5 Stars

## MORE DETAILS

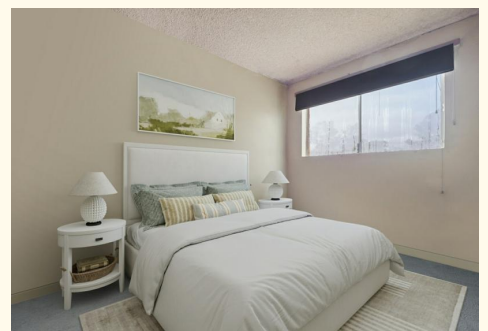
Property ID	2DMYFHK
Property Type	Unit
House Size	50 m <sup>2</sup>
EER	3.5

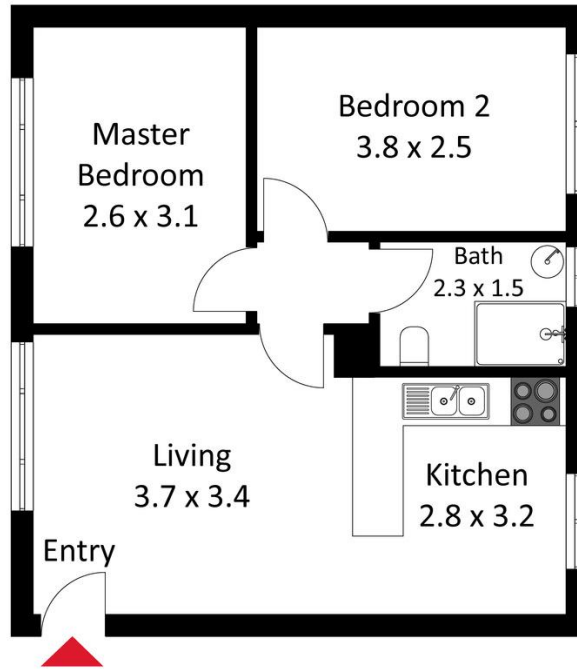
### Andrew Grenfell 0424 858 529

ACT Licensed Agent | [andrew.grenfell@ljhcanberracity.com.au](mailto:andrew.grenfell@ljhcanberracity.com.au)

### LJ Hooker Canberra City (02) 6249 7700

1st Floor, 182 - 200 City Walk, CANBERRA CITY ACT 2601  
[canberracity.ljhooker.com.au](http://canberracity.ljhooker.com.au) | [canberracity@ljhooker.com.au](mailto:canberracity@ljhooker.com.au)





The floor plan is not to scale; measurements are indicative and in metres. Exterior elements are not in position. Plans should not be relied on. Interested parties should make and rely on their own enquiries.