



27 Jukes Street, Hackett

Big On Space. Even Bigger On Lifestyle.

- Site Auction | Saturday the 21st March at 10am

FIND.

Tucked away at the end of one of Hackett's most tightly held cul-de-sacs, backing directly onto Mount Majura Reserve, this expansive five-bedroom family residence delivers rare scale, flexibility and serenity. From the moment you step inside, you're greeted by refreshed Australian hardwood timber floors and an immediate sense of light, space and connection to nature. The generous living areas stretch effortlessly toward the outdoors, where the pool glistens against a stunning reserve backdrop, which is truly breathtaking.

LOVE.

Designed for growing families and effortless entertaining, the flexible floorplan spans multiple oversized living zones including a large rumpus, expansive family area and seamless indoor-outdoor flow to the alfresco entertaining space. The updated kitchen offers excellent storage, quality appliances and easy connection to the meals area and deck, making everyday living practical and hosting effortless. Outdoors, the generous block offers easy-care gardens, a sparkling pool and a brand new spa. Perfect for long summer afternoons and

5 🚗 3 🚗 2 🚗

FOR SALE

Auction

AGENTS

Eoin Ryan-Hicks

0424 042 419

Eoin.ryan-hicks@ljhooker.com.au

Olivia Schultz

0415 366 287

olivia.schultz@ljhkipax.com.au

AGENCY

LJ Hooker Kippax

(02) 6255 3888

All information contained therein is gathered from relevant third parties sources. We cannot guarantee or give any warranty about the information provided. Interested parties must rely solely on their own enquiries.

 **LJ Hooker**

crisp Canberra evenings alike. Freshly painted inside and out, the home also features ducted reverse cycle heating and cooling + evaporative cooling and new LED lighting. With three bathrooms (including a brand new downstairs bathroom), an oversized double car garage and even a wine cellar, this is a home that truly delivers at every turn.

LIVE.

Living here means starting your mornings with a walk through the reserve and ending your day surrounded by complete peace and privacy. With Mount Majura as your extended backyard, nature becomes part of everyday life, while schools, local shops, cafés and the Canberra CBD remain only minutes away. It's a setting that feels wonderfully removed, yet effortlessly connected, the best of both worlds for modern family living.

ABOUT THE AREA

Local Amenities:

- Mount Majura Reserve & walking trails
- Majura Pines Mountain Bike Park
- Hackett Shops
- Close proximity to Canberra CBD

Schools:

- Hackett Primary School
- Daramalan College
- Campbell High School

WHAT THE OWNER LOVES:

"We've spent 13 wonderful years here watching our kids grow up, and the home has adapted beautifully to every stage of life, from generous storage and multiple living zones to a private master retreat, guest suite, pool, spa. Some of our best memories have been hosting big family Christmases and spontaneous get-togethers, with the open living areas flowing effortlessly onto the deck. We'll miss stepping straight into Mount Majura Reserve, grabbing locally roasted coffee beans from Maitland Street Roasters just two streets away, and sitting on the balcony with a morning coffee, looking through the oak trees and soaking in the peace and quiet."

OVERVIEW:

- Five-bedroom family home
- Flexible floorplan with multiple living zones
- Refreshed Australian hardwood timber floors
- Large rumpus room & expansive family area
- Updated kitchen with excellent storage & flow to alfresco
- Three bathrooms (brand new downstairs bathroom)
- Sparkling pool & brand new spa
- Seamless indoor-outdoor entertaining
- Wine cellar
- Oversized double garage
- Fresh internal & external paint
- New LED lighting throughout
- Ducted reverse cycle heating & cooling + evaporative cooling
- Large 910sqm approx. block backing reserve
- End of cul-de-sac position

RATES/SIZE:

Living Size: 404sqm approx.

Block Size: 910sqm approx.

Rates: \$6,062 p.a approx.

EER: 2.5

All information contained herein is gathered from sources we consider to be reliable. However, we cannot guarantee or give any warranty about the information provided. Interested parties must solely rely on

their own enquiries.

MORE DETAILS

Property ID	1J07F9U
Property Type	House
House Size	404 m2
Land Area	910 m2
EER	2.5

Eoin Ryan-Hicks 0424 042 419

Franchise Owner | Sales Manager | Licensed Agent ACT & NSW |
Eoin.ryan-hicks@ljhooker.com.au

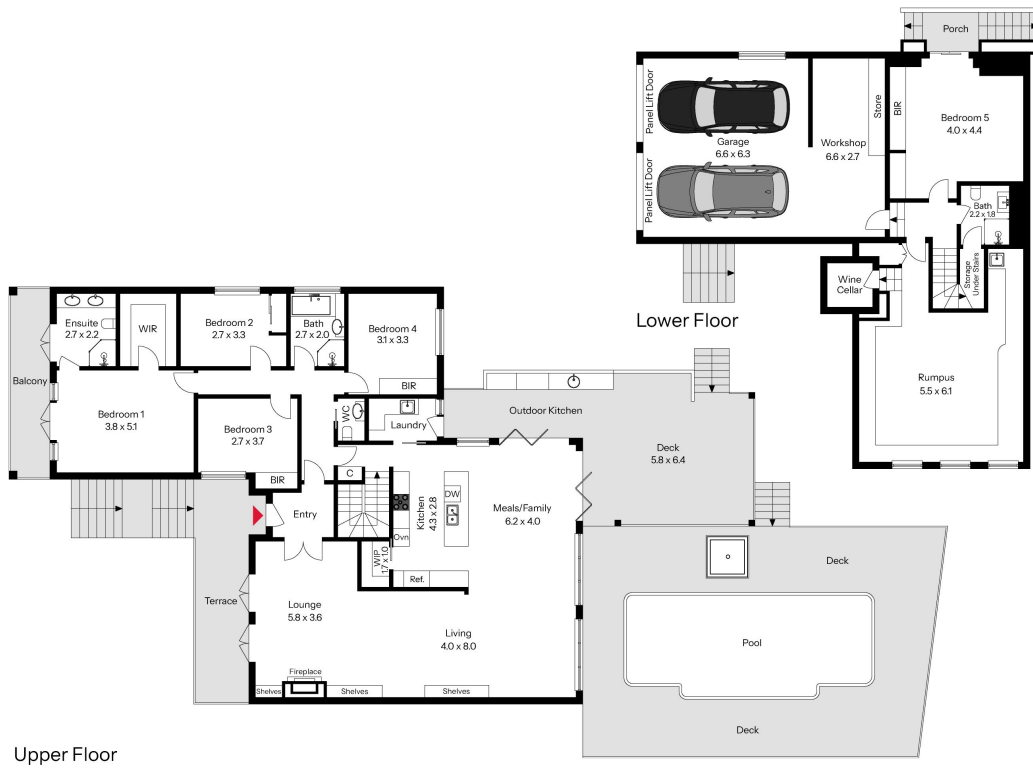
Olivia Schultz 0415 366 287

Licensed Agent | Team Ryan-Hicks | olivia.schultz@ljhkipax.com.au

LJ Hooker Kippax (02) 6255 3888

Cnr Luke Street & Hardwick Crescent, HOLT ACT 2615
kipax.ljhooker.com.au | kippax@ljhooker.com.au





Upper Floor

Lower Floor

The floor plan is not to scale; measurements are indicative and in metres. Exterior elements are not in position. Plans should not be relied on. Interested parties should make and rely on their own enquiries.

27 Jukes Street, Hackett



All information contained therein is gathered from relevant third parties sources. We cannot guarantee or give any warranty about the information provided. Interested parties must rely solely on their own enquiries.

