

Nue, Camilleri Way, Gungahlin


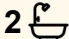
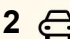
Brand-New, Move-In Ready 3-Bedroom Townhouse

Step into a home that combines contemporary design with practical family living. These brand-new 3-bedroom townhouses, developed by Core Developments, were completed earlier this year and are ready for you to make it your own. Located within the NUE Complex, these homes offer the perfect canvas to personalise your space and lifestyle.

Each bedroom comes with its own private balcony, creating light-filled spaces and a seamless connection to the outdoors. Open-plan living areas feature floor-to-ceiling windows, stone benchtops, and luxurious 100% wool carpeting. Residents also benefit from a communal rooftop BBQ area, perfect for entertaining or relaxing with neighbours, while the proximity to the Mulanggari Grasslands provides a serene, natural backdrop.

Perfect for families or those seeking extra space, these townhouses offer a unique opportunity to secure a contemporary home in a vibrant town centre location.

Open home: 58/63 Camilleri Way, Gungahlin
Book your viewing today and experience modern townhouse living at

3  2  2 

FOR SALE
\$829,900+

VIEW
By Appointment

AGENTS
James Herbert
0400 853 501
james.herbert@ljhookerprojects.com.au

AGENCY
LJ Hooker Canberra City
(02) 6249 7700

All information contained therein is gathered from relevant third parties sources.
We cannot guarantee or give any warranty about the information provided.
Interested parties must rely solely on their own enquiries.

 **LJ Hooker**

its finest!

MORE DETAILS

Property ID	2APRFHK
Property Type	Townhouse
EER	5

James Herbert 0400 853 501

Development Manager Project Marketing |
james.herbert@ljhookerprojects.com.au

LJ Hooker Canberra City (02) 6249 7700

1st Floor, 182 - 200 City Walk, CANBERRA CITY ACT 2601
canberracity.ljhooker.com.au | canberracity@ljhooker.com.au






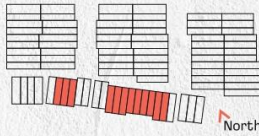


TOWNHOUSES

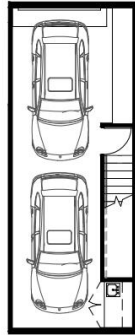
UNIT TYPE T3B1 (G)

UNITS: A006, A007, A008, A013, A014, A015, A016, A017, A018, A019, A020, A021

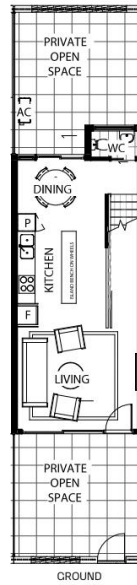
BEDROOMS	3	
BATHROOMS	3	
CARAGE	48m ²	
LIVING AREA	122.5m ²	
BALCONY	13.5m ²	
COURTYARD	37.5 - 40.5m ²	
TOTAL AREA	184.5m ²	



This material has been prepared for marketing purposes only and may be subject to change without notice. Materials, colours, landscape elements and levels shown are for illustrative purposes only. All dimensions are approximate. Floor areas are approximate and subject to final survey. This statement excludes Trilab Pty Ltd trading as LJ Hooker Project Marketing ACT of any liability for all information contained herein. MIN EIR 5.



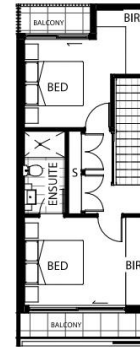
GARAGE



GROUND



LEVEL 1



LEVEL 2

