

914/2 Gribble Street, Gungahlin

2 🏠 2 🚿 2 🚗

It's made in the Jade.

The Jade complex (developed by POD Projects and built by Core Development) is a corner complex completed in 2021, with 174 dwellings.

Apartment 914/2 Gribble is the much loved 2 bedroom design the Jade is loved for. Located on Level 9, this light-filled, 2-bedroom apartment enjoys light, letting you make the most of the space.

The main bedroom includes an ensuite tucked away behind a sliding door, and the main bathroom is spacious in-between the two bedrooms, no sharing walls here.

The laundry, located in the hallway as you enter, features stone benchtops giving an elevated version of the European style. Extra storage tucked away in the hallway, to not impede on the space.

Two split system in the living and main bedrooms for year round comfort.

A large stone island is the main focal point in this apartment, double oven, and microwave storage. The double oven is a delightful surprise, and with induction cooking.

If you're not in the mood to cook, your downstairs neighbour is a

FOR SALE
\$535,000+

AGENTS

Bri Williams
0408 787 896
bri.williams@ljhooker.com.au

AGENCY

LJ Hooker Gungahlin
(02) 6213 3999

All information contained therein is gathered from relevant third parties sources.
We cannot guarantee or give any warranty about the information provided.
Interested parties must rely solely on their own enquiries.

 **LJ Hooker**

fantastic option. Skip Uber Eats and simply walk down to order from Asian Noodle House or Kebabs. Wait on your covered balcony, then go pick up your food just steps away.

A short walk away from Yerrabi Pond, you can come home after a brisk walk straight to your apartment with street access.

A true gem that shouldn't be missed.

Quick Wrap-Up

- 2 beds, 2 baths, 2 car spaces, 2 ovens apartment
- 87 sqm of internal living
- Large island kitchen with stone benchtops
- Induction cooking, with two ovens
- Continued stone benchtops for laundry
- Two split AC's in Living and main bedroom
- Timber-style flooring
- 2 side by side car space
- Downstairs include local eateries and commercial spaces (Asian Noodle House is a favourite)
- Close to Yerrabi Pond
- Nearby amenities: Siren Bar, Club Lime, Bunnings, Kmart, and more
- Local eateries: Grease Monkey, Sunday Café, El Jannah Chicken, Ramen, and Jade Dumpling House
- ACT Rates: approx. \$397 per quarter
- ACT Land tax for investment properties only: approx. \$1,059 per quarter

MORE DETAILS

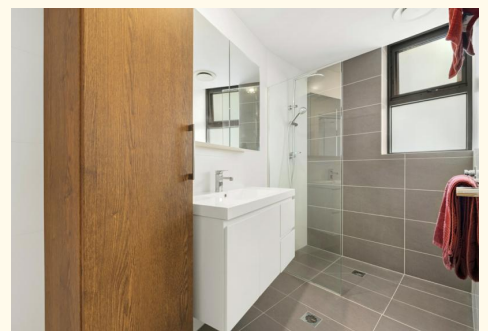
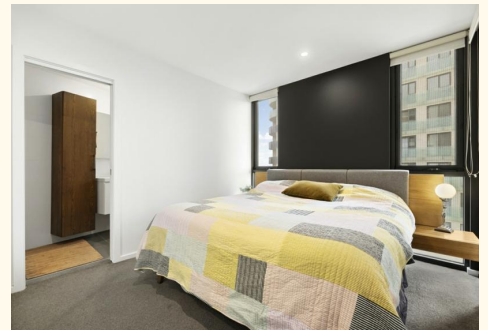
Property ID	35R6GCY
Property Type	Apartment
House Size	75 m2
EER	6
Including	Air Conditioning Open Plan Induction Cooking Electric Cooktop

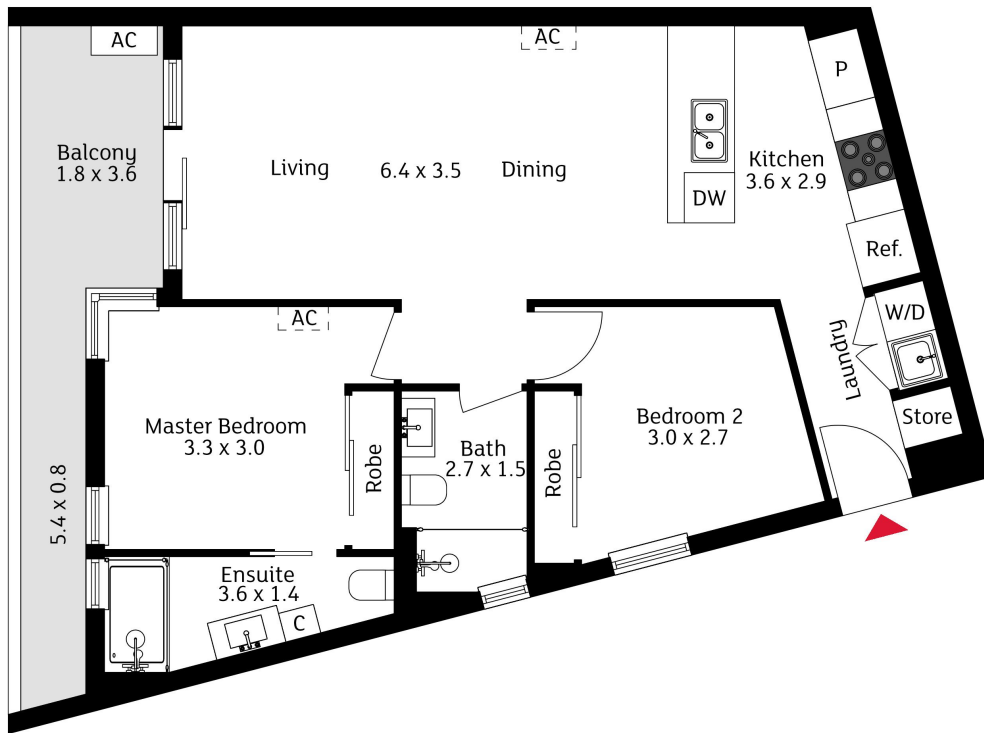
Bri Williams 0408 787 896

Licensed Agent & Auctioneer | bri.williams@ljhooker.com.au

LJ Hooker Gungahlin (02) 6213 3999

Suite 2C, Level 1, Gungahlin Village, 46-50 Hibberson Street,
GUNGAHLIN ACT 2912
gungahlin.ljhooker.com.au | gungahlin@ljhooker.com.au





The floor plan is not to scale; measurements are indicative and in metres. Exterior elements are not in position. Plans should not be relied on. Interested parties should make and rely on their own enquiries.

All information contained therein is gathered from relevant third parties sources.
We cannot guarantee or give any warranty about the information provided.
Interested parties must rely solely on their own enquiries.