




Nue, Camilleri Way, Gungahlin

Brand-New 2-Bedroom Townhouses - Style, Comfort, and Prime Location!

These modern 2-bedroom townhouses, crafted by renowned local developer Core Developments, are ready to move in, with construction completed earlier this year. Situated within the NUE Complex, they offer the perfect combination of convenience, community, and lifestyle. With low body corporate fees and minimal maintenance, these homes are designed to let you spend more time enjoying life and less time on upkeep.

Designed with light, space, and comfort in mind, each townhouse features floor-to-ceiling windows, stone benchtops, and luxurious 100% wool carpeting. The pedestrian-friendly layout and communal rooftop BBQ area make it easy to enjoy an active and social community, while being directly opposite the Mulanggari Grasslands adds a touch of nature to your doorstep.

Whether you are a first-home buyer, downsizer, or investor, these townhouses present a unique opportunity to secure a contemporary, move-in ready home in a highly sought-after location.

2  2  2 

FOR SALE
\$699,900+

VIEW
By Appointment

AGENTS
James Herbert
0400 853 501
james.herbert@ljhookerprojects.com.au

AGENCY
LJ Hooker Canberra City
(02) 6249 7700

All information contained therein is gathered from relevant third parties sources.
We cannot guarantee or give any warranty about the information provided.
Interested parties must rely solely on their own enquiries.

 **LJ Hooker**

Arrange a viewing today and experience modern town centre living at its best!

Open home: 58/63 Camilleri Way, Gungahlin

MORE DETAILS

Property ID	2APJFHK
Property Type	Apartment
EER	5

James Herbert 0400 853 501

Development Manager Project Marketing |
james.herbert@ljhookerprojects.com.au

LJ Hooker Canberra City (02) 6249 7700

1st Floor, 182 - 200 City Walk, CANBERRA CITY ACT 2601
canberracity.ljhooker.com.au | canberracity@ljhooker.com.au






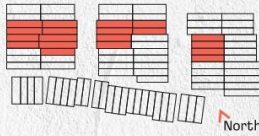


TOWNHOUSES

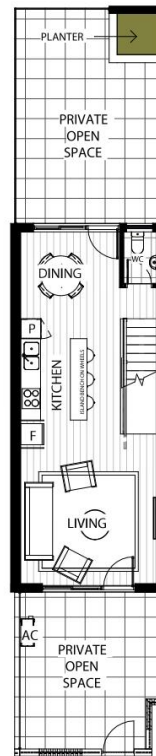
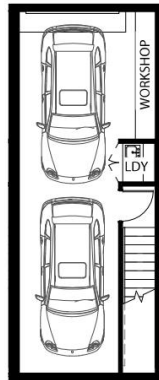
UNIT TYPE T2B2 (C)

UNITS: B004, B005, B006, B007, C005, C007, C009, C010, C011, C012, C013, C014, C016, D010, D012, D014, D016, D017

BEDROOMS	2	
BATHROOMS	2	
CARAGE	41m ²	
LIVING AREA	93.5m ²	
BALCONY	4m ²	
COURTYARD	41 - 58m ²	
TOTAL AREA	138.5m ²	



This material has been prepared for marketing purposes only and may be subject to change without notice. Materials, colours, landscape elements and levels shown are for illustrative purposes only. All dimensions are approximate. Floor areas are approximate and subject to final survey. This statement excludes Tribahn Pty Ltd trading as LJ Hooker Project Marketing ACT of any liability for all information contained herein. MIN EER 5.



0 1 2 3 4 5m