

11/538 Woodville Road, Guildford

Ground Floor!

This beautifully designed 2-bedroom ground floor unit that offers the perfect blend of modern living and convenience. Whether you're a first-time buyer, a small family, or looking to downsize, this property is sure to impress. Offering open plan living, kitchen with gas cooking and stainless appliances, airconditioning, secured car space and let's not forget about the moment you step outside to your own private courtyard where you can relax, garden, or enjoy outdoor dining. Don't miss out on this fantastic opportunity to purchase a unit that is well located. Call today to arrange an inspection.

Approx. Quarterly Outgoings;

Strata \$700.00
Council \$360.00
Water \$180.00

DISCLAIMER We have in preparing this information used our best endeavours to ensure that the information contained therein is true and accurate however, accept no responsibility and disclaim all liability in respect of any errors, inaccuracies or misstatements contained herein. Prospective buyers should make their own enquiries to verify the information contained herein

2 🏠 1 🚗 1 🚗

FOR SALE
\$489,000

AGENTS

Amelle Ghassibe
0424 754 232
aghasibe@ljhfairfield.com.au

AGENCY

LJ Hooker Fairfield
(02) 9727 7766

All information contained therein is gathered from relevant third parties sources.
We cannot guarantee or give any warranty about the information provided.
Interested parties must rely solely on their own enquiries.

 **LJ Hooker**

MORE DETAILS

Property ID 13Y1F99
Property Type Unit
Land Area 123 m²

Amelle Ghassibe 0424 754 232

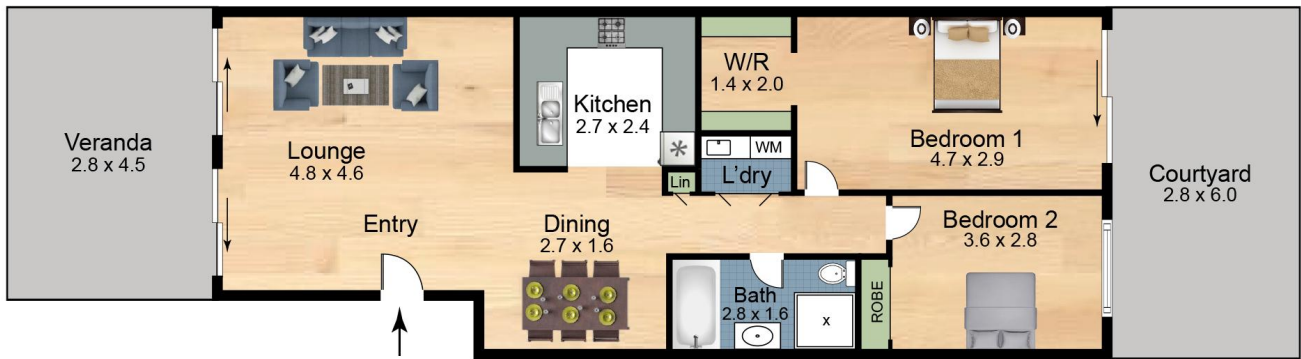
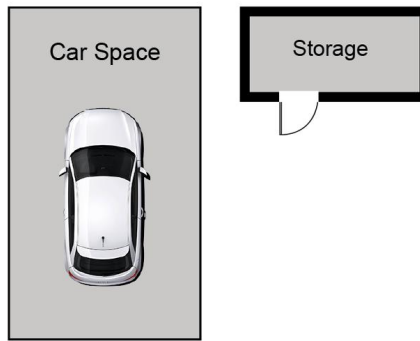
Residential Sales | aghasibe@ljhfairfield.com.au

LJ Hooker Fairfield (02) 9727 7766

195b The Boulevard, FAIRFIELD HEIGHTS NSW 2165
fairfield.ljhooker.com.au | fairfield@ljhfairfield.com.au



All information contained therein is gathered from relevant third parties sources.
We cannot guarantee or give any warranty about the information provided.
Interested parties must rely solely on their own enquiries.



**11/538 Woodville Road
Guildford 2161**

Scales in metres. Indicative only. Dimensions are approximate. All information contained here in is gathered from sources we believe to be reliable. However we cannot guarantee its accuracy and interested persons should rely on their own enquires.

