



Guildford, 5 Chamberlain Road

Full Brick Home Only Metres to Shops & Station on Large Block -714sqm Approx.

Discover the perfect blend of old-world charm and everyday convenience in this spacious full brick residence, ideally positioned in a sought-after location within easy reach to most amenities.

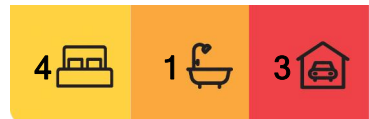
Set on a generous 714sqm block with wide 15.15m frontage (approx) and east facing aspect, this character-filled home offers comfort, space and potential.

Thoughtfully designed to accommodate both relaxed family living and entertaining, key features include:

- * Full brick construction with old world charm & character
- * East facing aspect
- * Four bedrooms (three with built ins)



Disclaimer: All information contained therein is gathered from relevant third parties sources. We cannot guarantee or give any warranty about the information provided. Interested parties must rely solely on their own enquiries.



For Sale
\$1,470,500

View
ljhooker.com.au/1RV7F9E

Contact
Paulette Ghaleb
0408 888 810
pghaleb.merrylands@ljhooker.com.au

**LJ Hooker Parramatta | Granville |
Guildford | Merrylands
(02) 9637 8555**

- * Neat timber kitchen with gas cooking & dishwasher
- * Elegant formal lounge and separate dining area
- * Expansive family room with raked ceiling & combustion heater
- * High ceilings and timber floorboards throughout
- * Internal laundry with 2nd toilet
- * Inground pool
- * Double lock up garage, carport plus ample off street parking
- * Large - 714sqm block with 15.15m frontage (approx.)
- * 900 metres approx. to Guildford Station
- * Within 650 metres to Guildford main shopping strip
- * Also within easy reach of schools, bus transport and amenities
- * Minutes drive to Parramatta CBD and Merrylands shopping centre
- * Only 950 metres to Aldi Grocery Store

Whether you are looking to move straight in, renovate, or explore future potential (STCA), this is a rare opportunity to secure a home that offers generous space, character, and an unbeatable location.

Don't miss this timeless gem —inspect and imagine the possibilities!

Please Note - Lounge room photo has been modified to include virtual furniture

More About this Property

Property ID	1RV7F9E
Property Type	House
Land Area	714 m2
Including	Toilets (2) Built-in-Robes Car Parking - Surface Close to Schools Close to Shops Close to Transport

Paulette Ghaleb 0408 888 810

Area Specialist | pghaleb.merrylands@ljhooker.com.au

LJ Hooker Parramatta | Granville | Guildford | Merrylands (02) 9637 8555

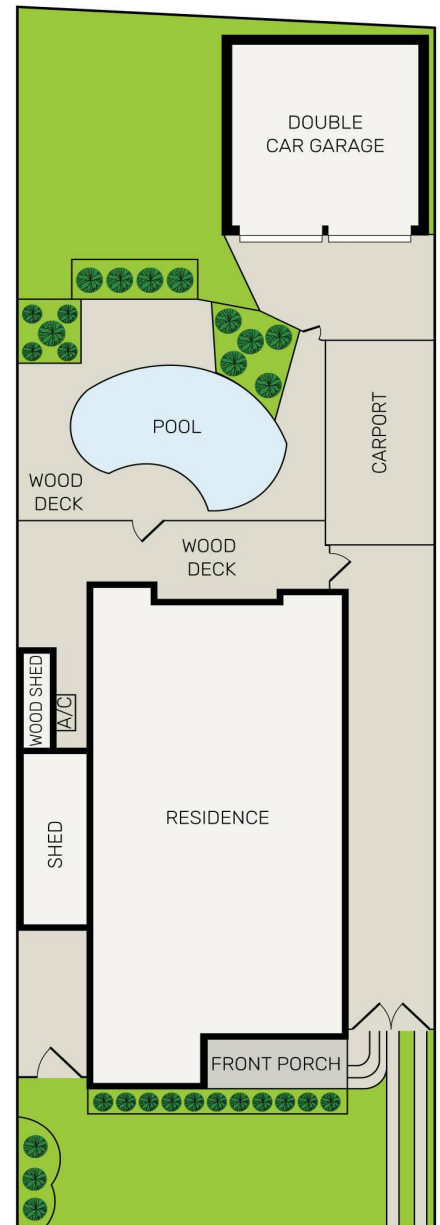
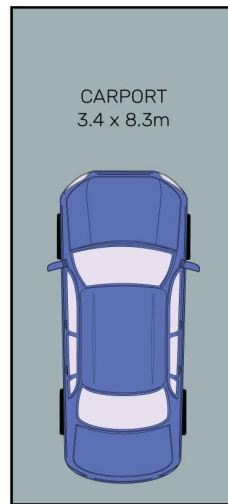
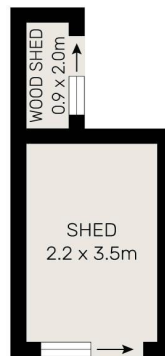
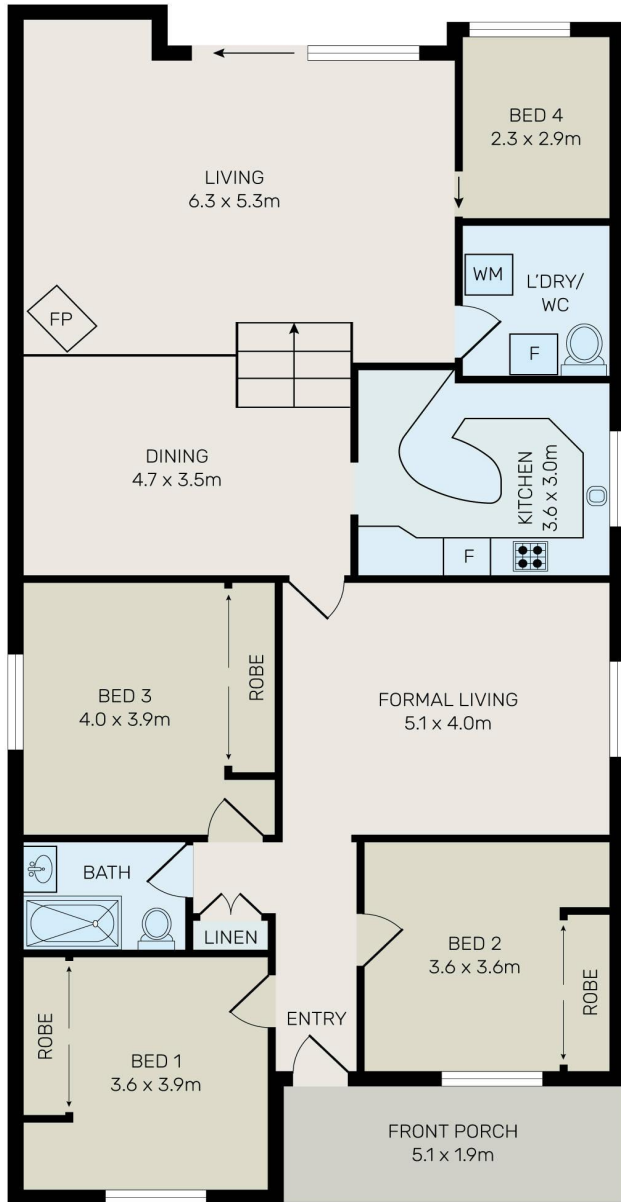
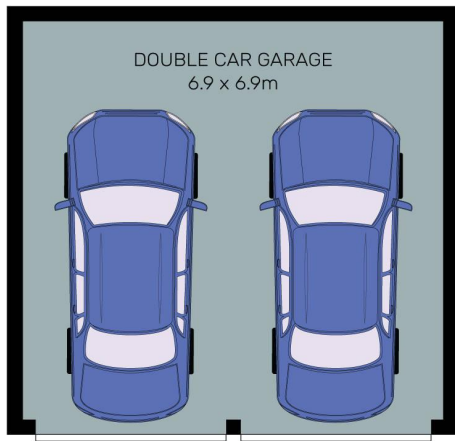
42 South Street, GRANVILLE NSW 2142

granville.ljhooker.com.au | granville@ljhooker.com.au



Disclaimer: All information contained therein is gathered from relevant third parties sources. We cannot guarantee or give any warranty about the information provided. Interested parties must rely solely on their own enquiries.

**LJ Hooker Parramatta | Granville |
Guildford | Merrylands
(02) 9637 8555**



All information contained herein is gathered from all sources we believe to be reliable. However we cannot guarantee its accuracy and interested parties should rely on their own enquiries.

5 Chamberlain Road, Guildford



LJ Hooker Parramatta | Granville |
 Guildford | Merrylands
 (02) 9637 8555

Disclaimer: All information contained therein is gathered from relevant third parties sources. We cannot guarantee or give any warranty about the information provided. Interested parties must rely solely on their own enquiries.