

33 Robertson Street, Guildford

Renovated Home with Sleep-Out on 638sqm with 16.764m Frontage (Approx) and R3 Medium Density Zoning!

Beautifully presented and renovated throughout, this impressive residence at 33 Robertson Street, Guildford West offers a fantastic opportunity for first home buyers, investors and developers alike.

Set on a generous & high-set parcel of land of approximately 638sqm with a wide 16.764m frontage (approx.), the property also provides excellent potential for duplex development, a granny flat or the construction of a brand-new home (all subject to council approval).

Immaculately maintained, the home combines modern updates with a practical and comfortable layout, making it ready to move in and enjoy while still offering future development possibilities.

Property Features:

- Renovated home with sleepout
- Home comprises of three bedrooms (two with built ins)
- Separate lounge & dining area

All information contained therein is gathered from relevant third parties sources. We cannot guarantee or give any warranty about the information provided. Interested parties must rely solely on their own enquiries.

4 🏠 2 🚗 1 🚗

AUCTION

Sat 11th Apr @ 12:30PM

VIEW

Sat 11th Apr @ 12:00PM - 12:30PM

AGENTS

Paulette Ghaleb
0408 888 810
paulette.ghaleb@ljhooker.com.au

AGENCY

LJ Hooker Parramatta | Granville |
Guildford | Merrylands
(02) 9637 8555



- Modern kitchen & stylishly updated bathroom
- Laminate timber floorboards.
- Covered outdoor entertaining area
- Detached sleep-out with its own bathroom, perfect for guests, teenagers, extended family or a home office
- " Land area —638 sqm approx.
- 16.764m frontage approx.
- Zoned R3 Medium Density
- Approximately 230 metres to Guildford West Public School
- Close to local shops, parks, and public transport
- Easy access to surrounding amenities and main arterial roads

Offering immediate comfort together with exciting future potential, this is a rare opportunity to secure a well-maintained home on a substantial parcel of land.

Move in, invest, or develop —the choice is yours.

MORE DETAILS

Property ID	2GWHF9E
Property Type	House
Land Area	638 m2
Including	Air Conditioning Toilets (3) Built-in-Robes Close to Schools Close to Shops

Paulette Ghaleb 0408 888 810

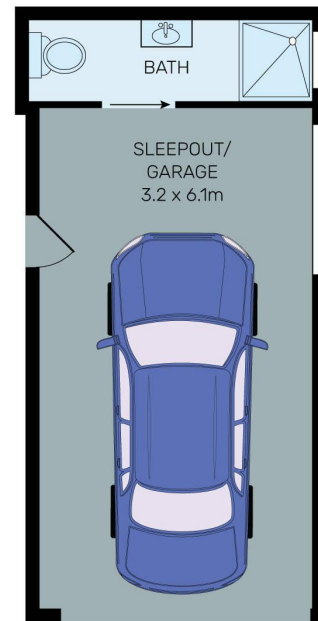
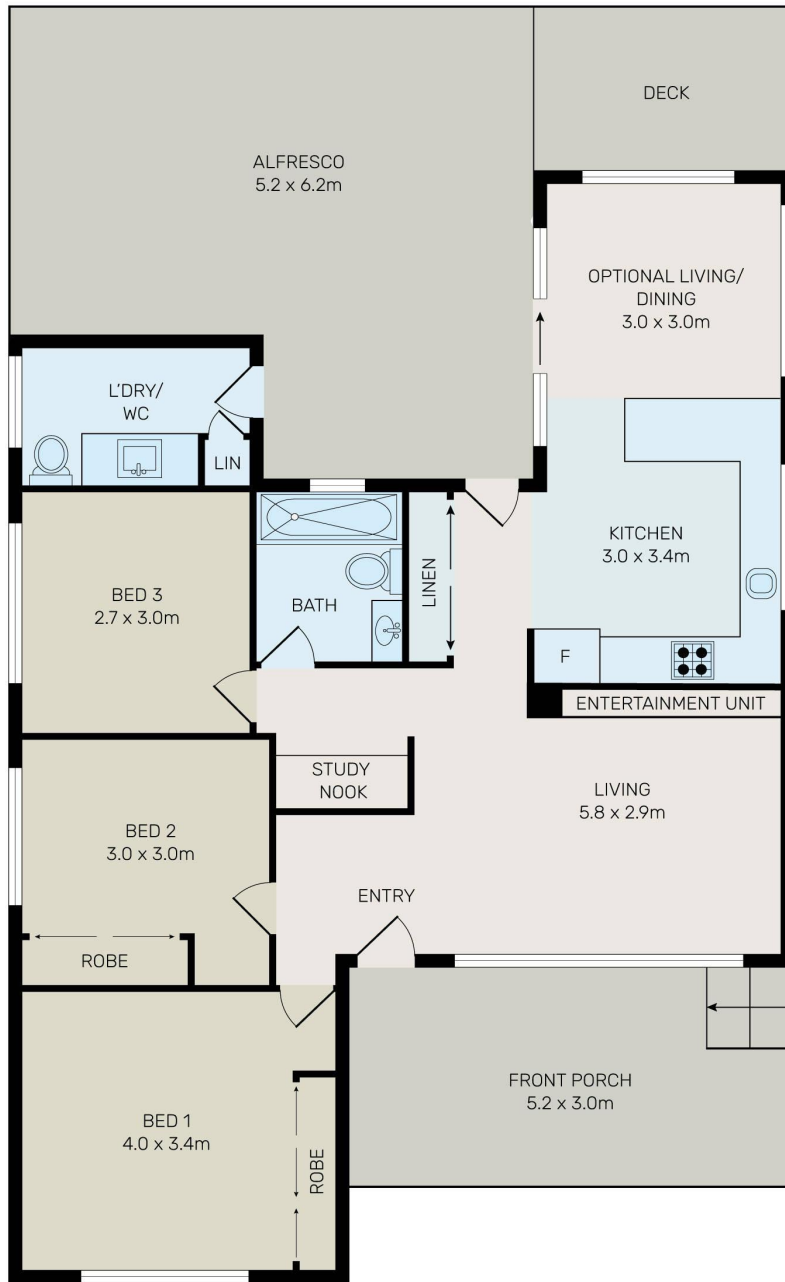
Area Specialist | paulette.ghaleb@ljhooker.com.au

LJ Hooker Parramatta | Granville | Guildford | Merrylands (02) 9637 8555

42 South Street, GRANVILLE NSW 2142

granville.ljhooker.com.au | granville@ljhooker.com.au





All information contained herein is gathered from all sources we believe to be reliable. However we cannot guarantee its accuracy and interested parties should rely on their own enquiries.



33 Robertson Street, Guildford

All information contained therein is gathered from relevant third parties sources. We cannot guarantee or give any warranty about the information provided. Interested parties must rely solely on their own enquiries.

