



29 Rhodes Avenue, Guildford

Flexible Living on a Prime Corner Position

Positioned on a highly desirable corner block in a convenient Guildford location.

29 Rhodes Avenue presents a rare opportunity offering flexibility, accessibility, and future potential.

Previously configured as an NDIS-approved residence, this solid brick home has been thoughtfully adapted for accessibility and comfortable living. Currently set up as a spacious 2-bedroom home, the versatile floorplan allows for an easy conversion into a 4–5 bedroom residence, making it ideal for large families or savvy investors seeking strong future returns.

Set on a prominent corner position, the property offers excellent accessibility, added privacy, and potential for further enhancement (STCA).

Property Features:

- Solid brick construction
- High ceilings, large windows and an abundance of natural sunlight
- Prime corner block position sitting on 694sqm
- " Currently configured as 2 bedrooms

2 🏠 3 🚿 2 🚗

AUCTION

Sat 2nd May @ 1:00PM

VIEW

Sat 11th Apr @ 12:30PM - 1:00PM

AGENTS

Darrell Fernandes
0411 247 186
darrell.bl@ljhooker.com.au

Sime Keremelevski
0413 077 217
Sime.BL@ljhooker.com.au

AGENCY

LJ Hooker Liverpool
02 9708 2333

All information contained therein is gathered from relevant third parties sources.
We cannot guarantee or give any warranty about the information provided.
Interested parties must rely solely on their own enquiries.

 LJ Hooker

- " Flexible floorplan with potential to make this a 4–5 bedroom home
- Spacious interiors with adaptable living zones
- Convenient location close to shops, schools, transport, and local amenities

Whether you're looking to move in, invest, or reconfigure to suit your needs, this property delivers versatility rarely found in today's market.

Opportunities like this are few and far between - inspect and explore the possibilities for yourself.

MORE DETAILS

Property ID	MCJ0W
Property Type	House
Land Area	694 m2

Darrell Fernandes 0411 247 186

Sales Agent | darrell.bl@ljhooker.com.au

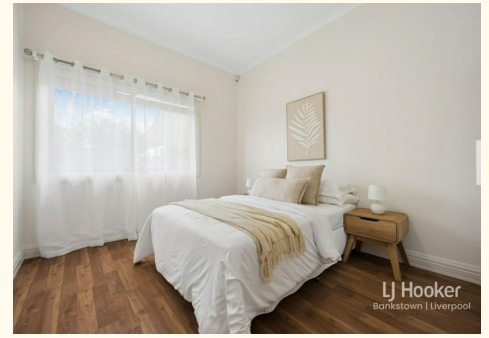
Sime Keremelevski 0413 077 217

| Sime.BL@ljhooker.com.au

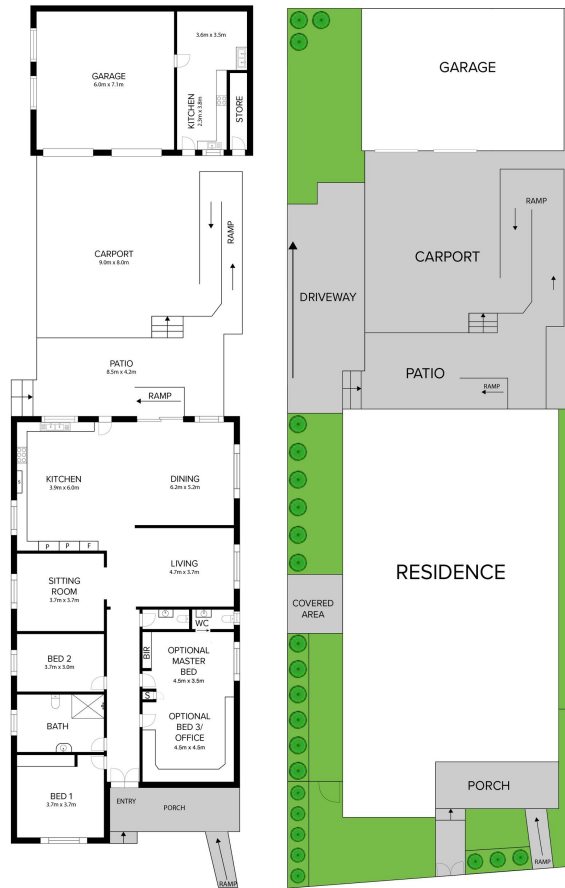
LJ Hooker Liverpool 02 9708 2333

312 Macquarie Street, LIVERPOOL NSW 2170

liverpool.ljhooker.com.au | liverpool@ljhooker.com.au



All information contained therein is gathered from relevant third parties sources. We cannot guarantee or give any warranty about the information provided. Interested parties must rely solely on their own enquiries.



29 Rhodes Avenue | Guildford

Disclaimer: Dimensions are approximate and should only be used as a guide. All information contained herein is gathered from sources we believe to be reliable. However, we cannot guarantee its accuracy and interested parties should rely on their own enquiries.