

Guildford, 213 Excelsior Street

Brick House + Self Contained Sleepout

A great opportunity to secure this beautiful family home with a separate self-contained sleepout, ideal for extended families or the astute investor.

This property is within close proximity to public transport, primary and secondary schools, shops and surrounding recreational facilities.

Duplex redevelopment potential: STCA
Granny flat development potential: STCA

Features Include:

- * Total 6 bedrooms, 3 bathrooms, tandem car spaces
- * Separate lounge and dining areas
- * Tiles and downlights throughout
- * Gas kitchen, stone benchtop



Disclaimer: All information contained therein is gathered from relevant third parties sources. We cannot guarantee or give any warranty about the information provided. Interested parties must rely solely on their own enquiries.

6

4

3

Auction

Sat 14th Jun @ 12:30PM

View

Sat 7th Jun @ 1:00PM - 1:30PM

Contact

Steven Khawam

0415 308 100

Steven.Khawam@ljhooker.com.au

**LJ Hooker Parramatta | Granville |
Guildford | Merrylands
(02) 9637 8555**

- * Master bedroom with an ensuite
- * Undercover entertainment area
- * Air conditioning
- * Solar panels

Sleepout:

- * 1 bedroom, 1 bathroom, car space
- * Large kitchen
- * Tiles and downlights throughout
- * Internal laundry

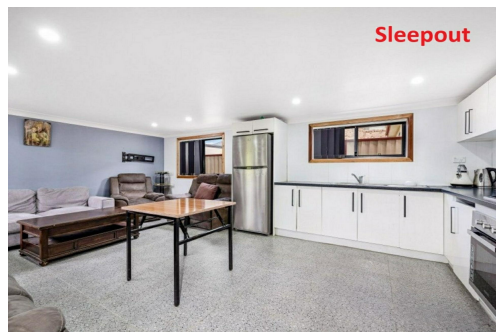
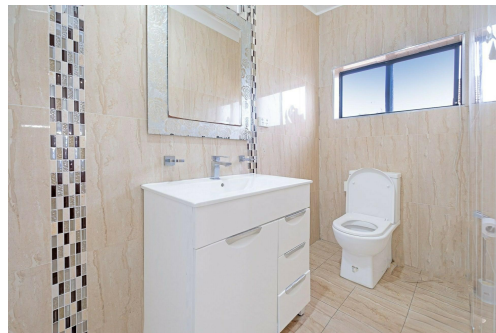
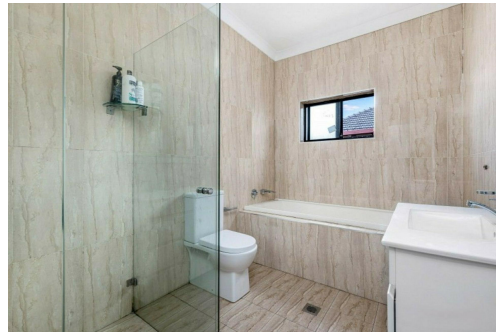
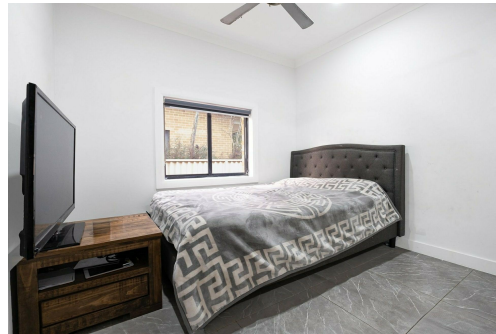
15.24m frontage, 645sqm block approx.

More About this Property

Property ID	1Z29F9E
Property Type	House
Land Area	645 m2

Steven Khawam 0415 308 100
 Area Specialist | Steven.Khawam@ljhooker.com.au

LJ Hooker Parramatta | Granville | Guildford | Merrylands (02) 9637 8555
 42 South Street, GRANVILLE NSW 2142
granville.ljhooker.com.au | granville@ljhooker.com.au



Disclaimer: All information contained therein is gathered from relevant third parties sources.
 We cannot guarantee or give any warranty about the information provided. Interested parties must rely solely on their own enquiries.

**LJ Hooker Parramatta | Granville |
 Guildford | Merrylands
 (02) 9637 8555**



All information contained herein is gathered from all sources we believe to be reliable. However we cannot guarantee its accuracy and interested parties should rely on their own enquiries.



213 Excelsior Street, Guildford