

Guildford, 20B Grassmere Street

SOLD AT AUCTION by Fred 0469765033 & Mo 0426 006 001

Brand New, Luxury & Spacious Duplex —398sqm (approx).

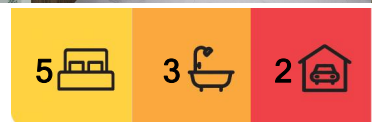
Situated on the high side of the street, this brand-new duplex is the perfect combination of luxury, space, and modern design, featuring soaring high ceilings, sleek finishes, and multiple living areas.

This duplex is perfect for family gatherings and entertaining, along with a modern open-plan kitchen designed for the ultimate culinary experience. High-end finishes, abundant natural light, and ample space make this home a true standout..

Be swept away by the striking beauty of a high ceiling foyer, where modern design meets architectural excellence. The beautiful extra high ceilings seamlessly flow into a stunning void that enhances the open, airy feel of the space, creating an awe-inspiring first impression.



Disclaimer: All information contained therein is gathered from relevant third parties sources. We cannot guarantee or give any warranty about the information provided. Interested parties must rely solely on their own enquiries.



For Sale
\$1,675,000

View
[ljhooker.com.au/2FG3F9E](https://ljhooke.com.au/2FG3F9E)

Contact
Fred Nazari
0451 919 640
fred.nazari@ljhooker.com.au
Mo Nazari
0426 006 001
moein.nazari@ljhooker.com.au

**LJ Hooker Parramatta | Granville |
Guildford | Merrylands
(02) 9637 8555**

Key Features:

- * 5 spacious bedrooms (four with built-ins), master with ensuite and walk in robe and balcony
- * Modern gas cooking kitchen quality finishes with stone benches, dishwashing, and plus walk-in pantry
- * Three luxury bathrooms (including ensuite)
- * 3 Spacious living areas, plus Lounge
- * Main living with a modern fireplace and tv setup
- * High ceilings and grand foyer entry with soaring void
- * Internal laundry with storage space
- * Study room perfect for remote work
- * Tile flooring on the ground floor
- * Laminate flooring on the first floor
- * Ducted air-conditioning
- * Large outdoor alfresco entertaining area equipped with kitchenette
- * Well maintained backyard with a modern waterfall.
- * Plenty of Large Windows, strategically placed windows allow sunlight to pour in from every angle, filling the space with warmth and vitality throughout the day
- * Keyless front entry with smart lock
- * Lock up garage with internal entry
- * Secured CCTV Cameras

This is more than just a home-it's a lifestyle. Live where luxury meets modern design in every detail.

DISCLAIMER: All information contained herein is gathered from sources we believe to be reliable, however, we cannot guarantee its accuracy and interested persons should rely on their own enquiries.

More About this Property

Property ID	2FG3F9E
Property Type	House
Land Area	398 m2

Fred Nazari 0451 919 640

Area Specialist | fred.nazari@ljhooker.com.au

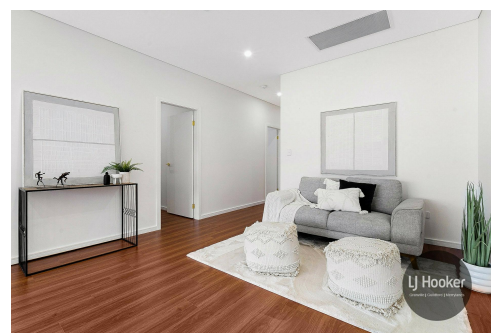
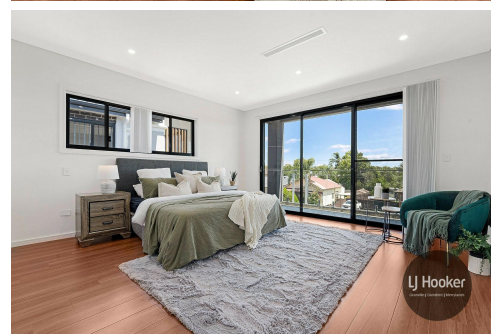
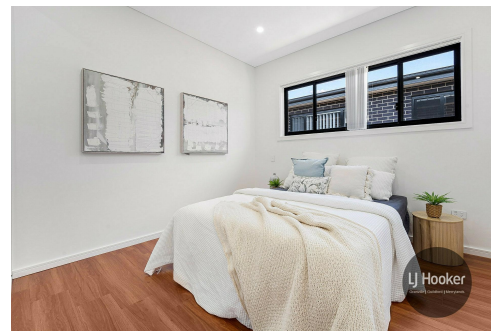
Mo Nazari 0426 006 001

Sales Associate | moein.nazari@ljhooker.com.au

LJ Hooker Parramatta | Granville | Guildford | Merrylands (02) 9637 8555

42 South Street, GRANVILLE NSW 2142

granville.ljhooker.com.au | granville@ljhooker.com.au

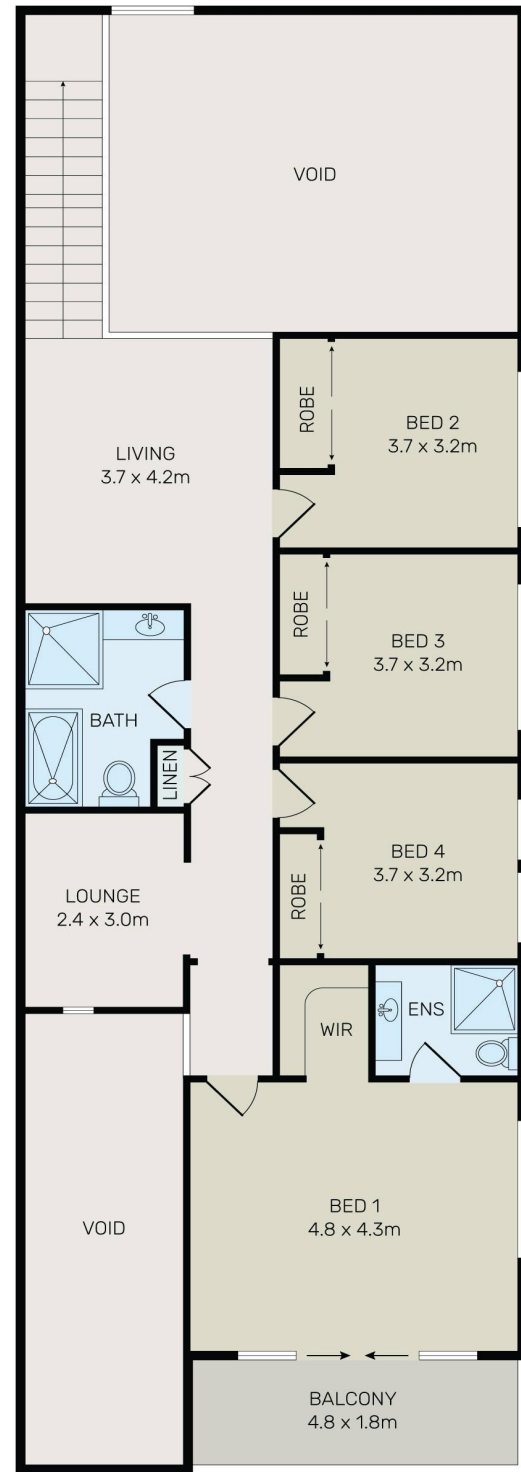


Disclaimer: All information contained therein is gathered from relevant third parties sources. We cannot guarantee or give any warranty about the information provided. Interested parties must rely solely on their own enquiries.

**LJ Hooker Parramatta | Granville |
Guildford | Merrylands
(02) 9637 8555**



GROUND FLOOR



FIRST FLOOR



All information contained herein is gathered from all sources we believe to be reliable. However we cannot guarantee its accuracy and interested parties should rely on their own enquiries.



20A Grassmere Street, Guildford



LJ Hooker Parramatta | Granville |
Guildford | Merrylands
(02) 9637 8555

Disclaimer: All information contained therein is gathered from relevant third parties sources.
We cannot guarantee or give any warranty about the information provided. Interested parties must rely solely on their own enquiries.