



2 Bury Road, Guildford

## Newly Built Luxury Family Home with Granny Flat —847.3 SQM

A rare opportunity to secure a new home and granny flat nestled on 847sqm, expertly designed for modern family living with the added benefit of multi-generational accommodation or potential rental income. Recently completed in 2026, this impressive property offers quality finishes, spacious interiors and premium inclusions throughout.

Positioned on a fully fenced block in a convenient Guildford location, the property features a stunning single level residence plus a private two-bedroom granny flat, making it perfect for extended families or savvy investors.

### Main Residence

- Single level brick veneer home
- 4 spacious bedrooms with custom built wardrobes, master with ensuite
- Formal lounge room, easily converted into a 5th bedroom
- Tiled living areas throughout
- Designer polyurethane kitchen with 60mm stone benchtops and stone splashback
- Island bench with power connections and ample cupboard space
- Integrated Miele fridge and dishwasher
- 900mm Smeg gas cooktop

All information contained therein is gathered from relevant third parties sources. We cannot guarantee or give any warranty about the information provided. Interested parties must rely solely on their own enquiries.

6 3 7

**FOR SALE**  
\$2,800,000 - \$3,000,000

**VIEW**  
By Appointment

**AGENTS**  
Joseph Nasr  
0405 824 646  
Joseph.Nasr@ljhooker.com.au

Joe Guida  
0450 797 333  
joe.guida@ljhooker.com.au

**AGENCY**  
LJ Hooker Parramatta | Granville |  
Guildford | Merrylands  
(02) 9637 8555



- Open plan living and dining flowing seamlessly to the covered alfresco with gas and power connections
- Stylish main bathroom with floor to ceiling tiles and floating vanity
- Spacious laundry with custom cabinetry and third toilet

#### Granny Flat

- Private and well designed 2 bedroom accommodation
- Built-in wardrobes in both bedrooms
- Open plan living and dining
- Gas kitchen
- Daikin ducted air-conditioning
- Private backyard space

#### Additional Features

- Built in 2024 —knockdown and rebuild
- Daikin 6-zone ducted air-conditioning with wireless connectivity
- Plantation shutters throughout
- Intercom system
- Solar panels
- Double garage plus additional off-street parking
- Fully fenced property

Offering a total of 6 bedrooms, 3 bathrooms, 4 toilets and parking for up to 7 vehicles, this exceptional property delivers space, flexibility and luxury in one impressive package.

Perfectly located close to schools, shops, transport and local amenities, this is a fantastic opportunity to secure a brand-new dual living residence in Guildford.

#### MORE DETAILS

Property ID	2GX0F9E
Property Type	House
Land Area	847.3 m2
Including	<ul style="list-style-type: none"> <li>• Ensuite</li> <li>• Air Conditioning</li> <li>• Toilets (4)</li> <li>• Built-in-Robes</li> <li>• Close to Schools</li> <li>• Close to Shops</li> <li>• Close to Transport</li> <li>• Disabled Access</li> <li>• Kitchenette</li> </ul>

#### Joseph Nasr 0405 824 646

Area Specialist | [Joseph.Nasr@ljhooker.com.au](mailto:Joseph.Nasr@ljhooker.com.au)

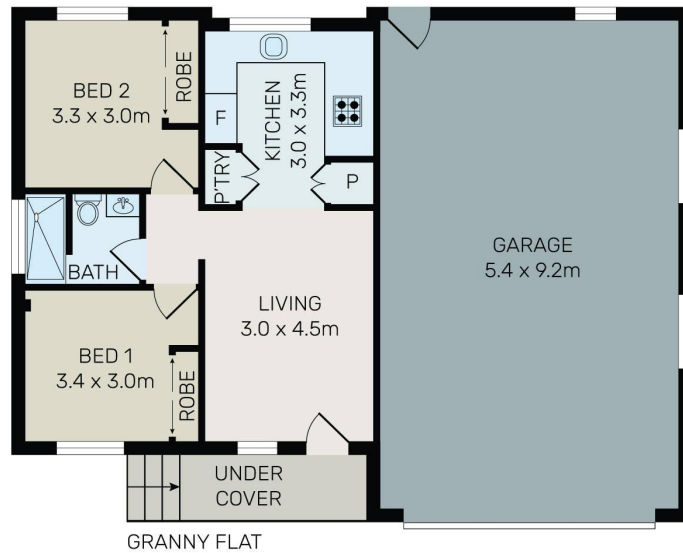
#### Joe Guida 0450 797 333

Area Specialist | [joe.guida@ljhooker.com.au](mailto:joe.guida@ljhooker.com.au)

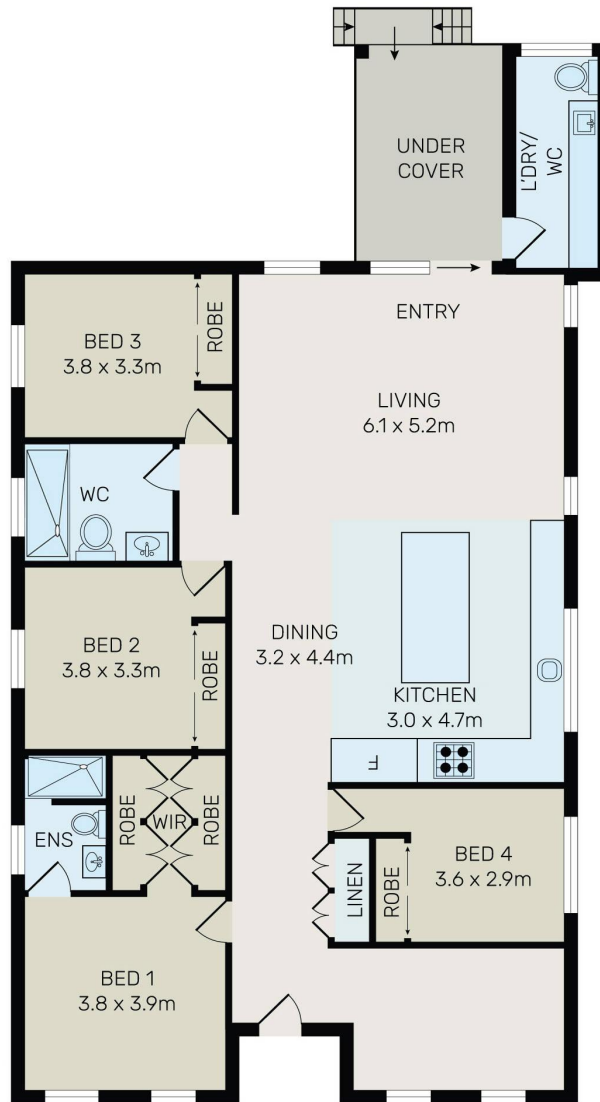
#### LJ Hooker Parramatta | Granville | Guildford | Merrylands (02) 9637 8555

42 South Street, GRANVILLE NSW 2142  
[granville.ljhooker.com.au](http://granville.ljhooker.com.au) | [granville@ljhooker.com.au](mailto:granville@ljhooker.com.au)





GRANNY FLAT



All information contained herein is gathered from all sources we believe to be reliable. However we cannot guarantee its accuracy and interested parties should rely on their own enquiries.



## 2 Bury Road, Guildford

All information contained therein is gathered from relevant third parties sources. We cannot guarantee or give any warranty about the information provided. Interested parties must rely solely on their own enquiries.