



11 Bursill Street, Guildford

Single-Level brick home in a Sought-After Location

Positioned in a highly desirable pocket of Guildford, this well-maintained single level brick veneer home offers space, versatility, and comfort on a generous 588.1sqm parcel of land. Perfect for families, investors, or those looking to secure a quality home with future potential, this property is ready to move in and enjoy.

Boasting a functional layout, the home features multiple living zones and flexible spaces that can easily adapt to your needs.

Property Features:

- Solid single level brick veneer home on 588.1sqm with a 13.5m frontage with excellent street presence
- Three generous bedrooms, all with built-in wardrobes
- Multiple living areas plus separate dining room (potential 4th and 5th bedroom)
- Modern stone kitchen with stainless steel appliances
- Large, enclosed entertainment area/sunroom flowing from the kitchen and main living area
- Renovated bathroom with separate toilet
- Spacious internal laundry with second toilet and ample storage
- Tiled flooring throughout with timber floorboards in bedrooms

All information contained therein is gathered from relevant third parties sources. We cannot guarantee or give any warranty about the information provided. Interested parties must rely solely on their own enquiries.

3 1 6

AUCTION

Sat 23rd May @ 1:00PM

VIEW

Sat 23rd May @ 12:30PM - 1:00PM

AGENTS

Joseph Nasr
0405 824 646
Joseph.Nasr@ljhooker.com.au

AGENCY

LJ Hooker Parramatta | Granville |
Guildford | Merrylands
(02) 9637 8555



- Ducted air conditioning with dual zones for year-round comfort
- Large tandem drive-through carport with remote roller door
- Off-street parking for up to 4 additional vehicles
- Expansive backyard with garden shed
- Clear block with granny flat potential subject to council approval.

Conveniently located close to local schools, shops, public transport, and all essential amenities, this is a fantastic opportunity to secure a quality home in a thriving and family-friendly neighbourhood.

MORE DETAILS

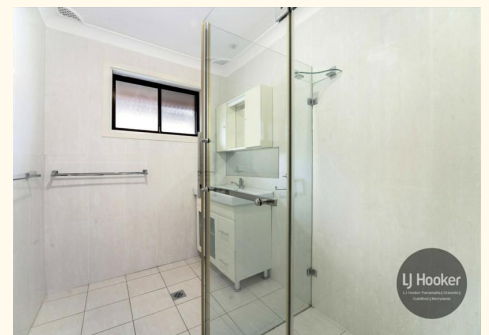
Property ID	2H1MF9E
Property Type	House
Land Area	588.1 m2
Including	Air Conditioning
	Toilets (2)
	Built-in-Robes
	Close to Schools
	Close to Shops
	Close to Transport

Joseph Nasr 0405 824 646

Area Specialist | Joseph.Nasr@ljhooker.com.au

LJ Hooker Parramatta | Granville | Guildford | Merrylands (02) 9637 8555

42 South Street, GRANVILLE NSW 2142
granville.ljhooker.com.au | granville@ljhooker.com.au





All information contained herein is gathered from all sources we believe to be reliable. However we cannot guarantee its accuracy and interested parties should rely on their own enquiries.



11 Bursill Street, Guildford

All information contained therein is gathered from relevant third parties sources. We cannot guarantee or give any warranty about the information provided. Interested parties must rely solely on their own enquiries.

