



6B George Street, Guildford

CUL DE SAC LOACTION

Set in a highly convenient and sought-after pocket of Guildford, this spacious duplex presents an outstanding opportunity for large families, investors or buyers seeking a quality home with strong rental potential. Offering a generous and functional layout, the property features five well-proportioned bedrooms including a downstairs bedroom. Located close to schools, public transport, shopping and local amenities.

- 5 generous size bedrooms
- Kitchen with gas cooking
- Open plan living with Airconditioning
- Ideal investment or large family residence
- Alfresco overlooking low-maintenance block
- Approx 1.3km to Guildford Train Station

- photos used for marketing purpose only

DISCLAIMER: We have in preparing this information used our best endeavours to ensure that the information contained therein is true and accurate however, accept no responsibility and disclaim all liability in respect of any errors, inaccuracies or misstatements contained herein. Prospective buyers should make their own enquiries to verify the information contained herein

5 🏠 3 🚗 1 🚘

AUCTION

Sat 18th Jul @ 12:30PM

VIEW

Sat 27th Jun @ 12:00PM - 12:30PM

AGENTS

Amelle Ghassibe
0424 754 232
aghasibe@ljhfairfield.com.au

AGENCY

LJ Hooker Fairfield
(02) 9727 7766

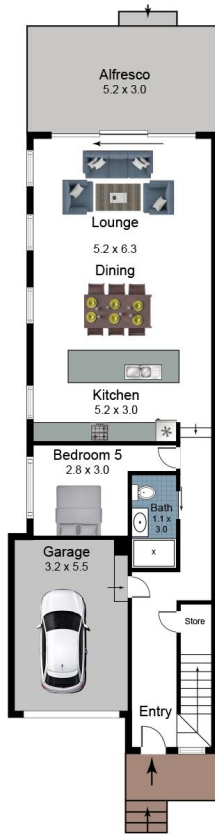
MORE DETAILS

Property ID 14FVF99
Property Type DuplexSemi-detached

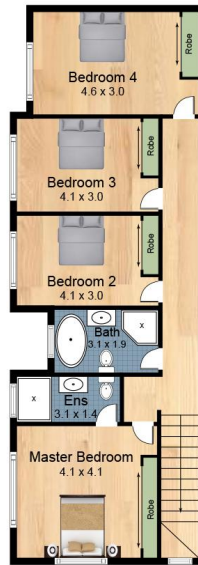
Amelle Ghassibe 0424 754 232
Residential Sales | aghasibe@ljhfairfield.com.au

LJ Hooker Fairfield (02) 9727 7766
195b The Boulevard, FAIRFIELD HEIGHTS NSW 2165
fairfield.ljhooker.com.au | fairfield@ljhfairfield.com.au





Ground Floor



First Floor



Site Plan

6B George St Guildford 2161

Scales in metres. Indicative only. Dimensions are approximate. All information contained here is gathered from sources we believe to be reliable. However we cannot guarantee its accuracy and interested persons should rely on their own enquiries.

