



Greta, 35 Branxton Street

Wonderful 3 Bedroom Cottage

Situated on a 603.4 sqm corner block is this well-presented, freshly painted weather board home.

The home comprises 3 spacious bedrooms, lounge room, dining room that adjoins the kitchen which has polished floor boards, bathroom which adjoins 2 bedrooms, 2nd shower with bath and toilet in the laundry plus a large family room.

There is a 6m by 12m shed ideal for working on cars and storage, rear pergola area and front verandah with views across town and beyond.

Extras include;

New carpet, built in robes, split system air conditioner, ceiling fans and dishwasher.

Conveniently located with easy access to the Hunter Express Way back to Maitland or up to the Coalmines with the Vineyards being only 10 minutes away.

The home is immaculately presented and is suitable for first home buyers or those looking to downsize.

3	2	6
---	---	---

For Sale
\$655,000 to \$685,000

View
ljhooker.com.au/SNHFR

Contact
Michael Cruickshanks
0409 362 130
michael@ljhv.com.au



LJ Hooker Greta | Branxton
(02) 4938 7779

Disclaimer: All information contained therein is gathered from relevant third parties sources. We cannot guarantee or give any warranty about the information provided. Interested parties must rely solely on their own enquiries.

Contact Michael Cruickshanks to arrange your private inspection today.

All information contained herein is gathered from sources we deem to be reliable. However, we cannot guarantee its accuracy and interested persons should rely on their own enquiries.

More About this Property

Property ID	SNHFR
Property Type	House

Michael Cruickshanks 0409 362 130
Licensee | michael@ljhvh.com.au

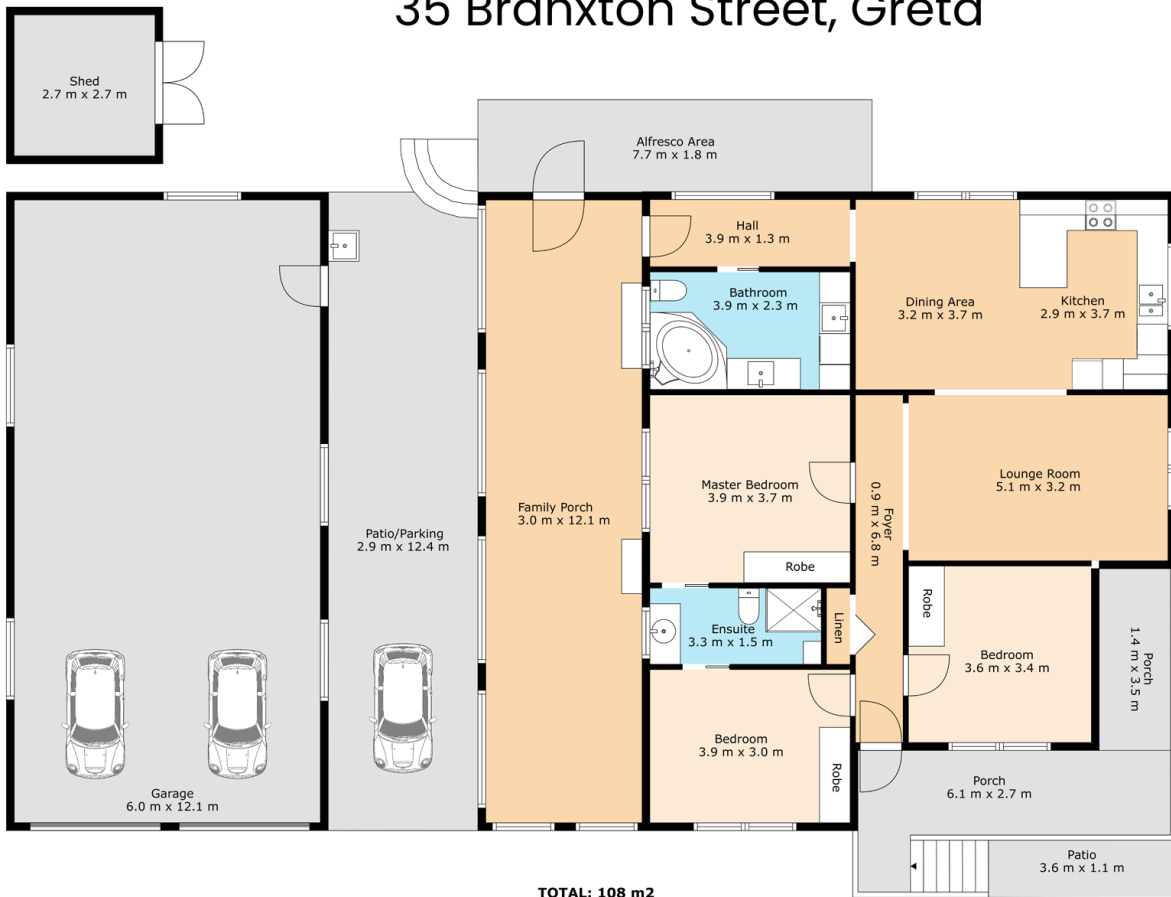
LJ Hooker Greta | Branxton (02) 4938 7779
7/172 John Street, SINGLETON NSW 2330
gretabranxton.ljhooker.com.au | reception@ljhvh.com.au



Disclaimer: All information contained therein is gathered from relevant third parties sources. We cannot guarantee or give any warranty about the information provided. Interested parties must rely solely on their own enquiries.

LJ Hooker Greta | Branxton
(02) 4938 7779

35 Branxton Street, Greta



TOTAL: 108 m²

FLOOR 1: 108 m²

EXCLUDED AREAS: SCREENED PORCH: 37 m², PORCH: 18 m², PATIO/PARKING: 40 m²,
ALFRESCO: 14 m², SHED: 8 m², GARAGE: 72 m²

ALL SIZES, DIMENSIONS & ELEMENTS ARE APPROXIMATE & INTENDED FOR VIEWING PURPOSES ONLY
© 2024 Rite Angle Media - All rights reserved
www.riteanglemedia.com.au

LJ Hooker
GRETA & BRANXTON

LJ Hooker

LJ Hooker Greta | Branxton
(02) 4938 7779

Disclaimer: All information contained therein is gathered from relevant third parties sources.
We cannot guarantee or give any warranty about the information provided. Interested parties must rely solely on their own enquiries.