

Greenwith, 8 Stonewall Place

Updated and Ready to Enjoy - A Perfect Home For Christmas!

Constructed in 2002 and having had tasteful updates completed throughout, this home sits on a manageable allotment and epitomises low-maintenance living. Nestled in one of Greenwith's most desirable pockets, everything you will ever need is just moments away.

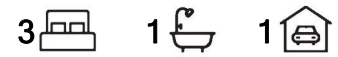
Simply put, this is a home and a location you'll love calling your own!

Features to Love:

- * Three spacious bedrooms, all with ceiling fans
- * Master bedroom with two built-in wardrobes
- * High-quality carpet in all bedrooms
- * Updated two-way bathroom with a separate toilet
- * 2.7m (approx.) ceiling height throughout
- * Freshly painted interior



Disclaimer: All information contained therein is gathered from relevant third parties sources. We cannot guarantee or give any warranty about the information provided. Interested parties must rely solely on their own enquiries.



For Sale
\$649,000 - \$699,000

View
ljhooker.com.au/2B1EGJU

Contact
Ryan Graham
0400 912 287
ryang@ljhsales.com.au
Craig Ricciuto
0417 806 329
craig@ljhsales.com.au

**LJ Hooker Greenwith | Golden Grove
| Mawson Lakes | Modbury
(08) 8289 6660**

- * Year-round comfort with ducted gas heating and evaporative cooling
- * Additional split system in the living area
- * Modern automation lighting system
- * 6kW (approx.) solar system
- * Central kitchen with breakfast bar, ample bench space, gas cooktop, electric oven and abundant storage
- * Instantaneous hot water with temperature control
- * Large decked outdoor entertaining area with ceiling fan, electric heaters and café blinds - perfect for family gatherings
- * Low-maintenance yard with quality astro turf in the rear
- * Ample off-street parking with single carport, automatic roller door and drive-through access

Whether you're downsizing, purchasing your first or second home, or seeking a stress-free investment, this property ticks all the right boxes!

Enjoy family time at one of the many nearby parks and reserves, including the popular Golden Fields Reserve, or explore the scenic walking trails at Cobble Creek Reserve and Little Para Reservoir.

Conveniently located within a short distance of both the Stables Shopping Centre and the Grove Shopping Centre, and within walking distance to local schools, sporting clubs and public transport options which make commuting in the Adelaide CBD a breeze!

Don't hesitate -contact Ryan Graham to register your interest today!

All information provided has been obtained from sources we believe to be accurate, however, we cannot guarantee the information is accurate and we accept no liability for any errors or omissions (including but not limited to a property's land size, floor plans and size, building age and condition). Interested parties should make their own enquiries and obtain their own legal and financial advice. Should this property be scheduled for auction, the Vendor's Statement may be inspected at either of our two LJ Hooker Property Specialists Real Estate offices for 3 consecutive business days immediately preceding the auction and at the auction for 30 minutes before it starts.

RLA 208516



Disclaimer: All information contained therein is gathered from relevant third parties sources. We cannot guarantee or give any warranty about the information provided. Interested parties must rely solely on their own enquiries.

**LJ Hooker Greenwith | Golden Grove
| Mawson Lakes | Modbury
(08) 8289 6660**

More About this Property

Property ID	2B1EGJU
Property Type	House
House Size	118 m ²
Land Area	267 m ²

Ryan Graham 0400 912 287

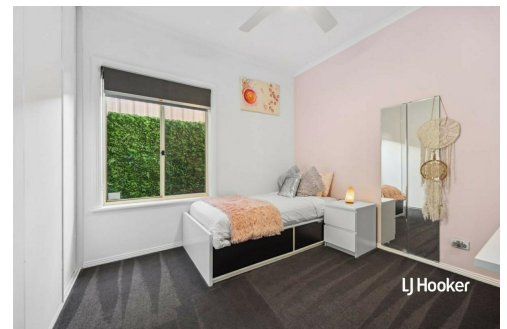
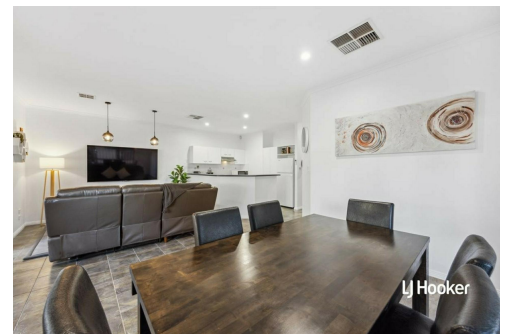
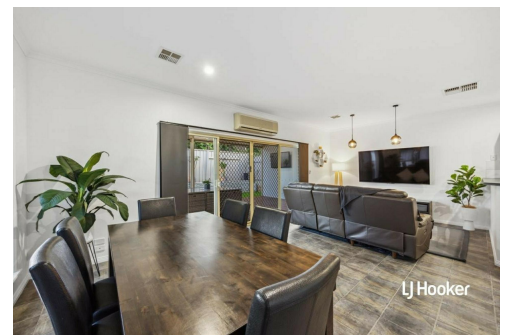
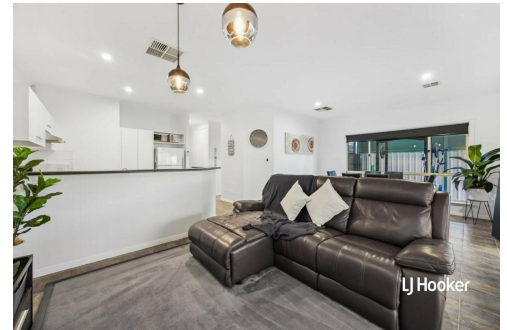
Sales Specialist | ryang@ljhsales.com.au

Craig Ricciuto 0417 806 329

Managing Partner | Sales Specialist | craigr@ljhsales.com.au

LJ Hooker Greenwith | Golden Grove | Mawson Lakes | Modbury (08) 8289 6660

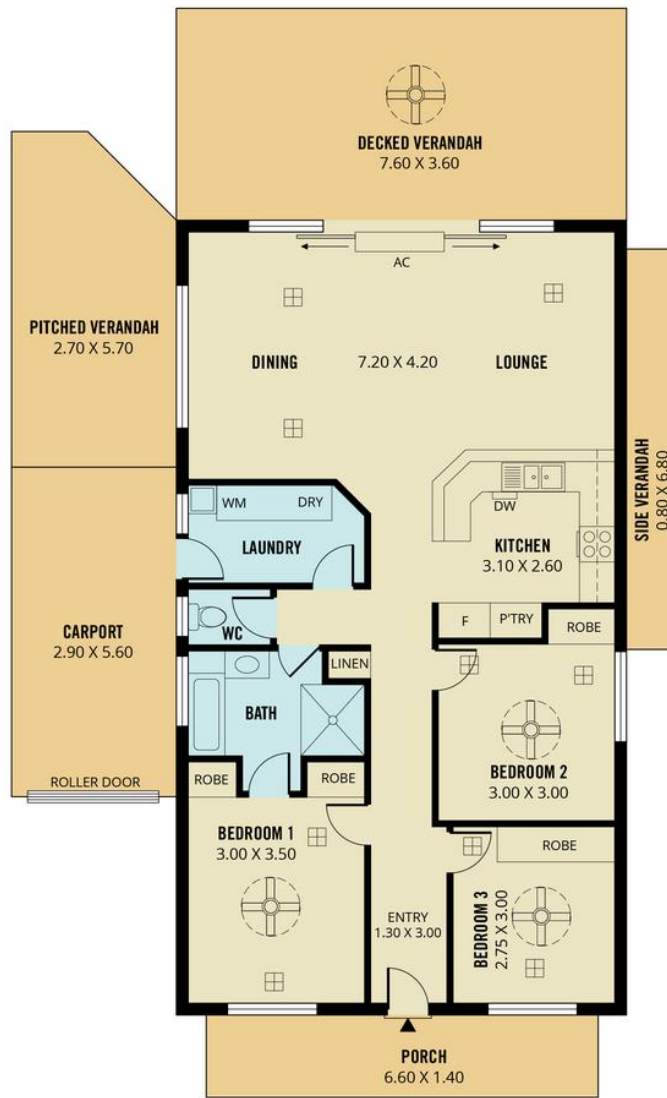
North East, Shop 2, 1007 North East Road, RIDGEHAVEN SA 5097
greenwithgoldengrove.ljhooker.com.au | info@ljhsupport.com.au



Disclaimer: All information contained therein is gathered from relevant third parties sources.

We cannot guarantee or give any warranty about the information provided. Interested parties must rely solely on their own enquiries.

**LJ Hooker Greenwith | Golden Grove
| Mawson Lakes | Modbury
(08) 8289 6660**



Scale in metres. This drawing is for illustration purposes only. All measurements are approximate and details intended to be relied upon should be independently verified. Produced by **The Fotobase Group**