

Greenwith, 8 Omnia Court

Beautifully Maintained Prime Residence



A true privilege it is to bring to you this classic, solid brick home, tucked away in the corner of a quiet court, presented to the market for the very first time since construction in 1985! The sole owner of the home has taken meticulous care of every aspect of their family home over the years but now this one is ready for its next chapter and family to take the reigns and make it their own.

Features you will love:

- * Four generous sized bedrooms
- * Master bedroom with bay windows, walk-in robe and ensuite
- * In addition to the ensuite, we have another two main bathrooms, one consisting of corner spa bath
- * Large family room in the heart of the home and formal light filled lounge room with wet bar facilities in between, for all your entertaining needs
- * Kitchen inclusive of dishwasher, electric cooktop, high top breakfast bar and walk-in

For Sale
\$1,250,000 - \$1,350,000

View
ljhooker.com.au/2B7RGJU

Contact
Craig Ricciuto
0417 806 329
craigr@ljhsales.com.au



Disclaimer: All information contained therein is gathered from relevant third parties sources. We cannot guarantee or give any warranty about the information provided. Interested parties must rely solely on their own enquiries.

**LJ Hooker Greenwith | Golden Grove
| Mawson Lakes | Modbury
(08) 8289 6660**

pantry

- * External additional rumpus room inclusive of second kitchen to the rear
- * Brilliant green backyard with half-court tennis court, shaded entertaining space, garden shed and plenty of lawn for the children or four legged friends to run around in
- * Twin driveway access to home and secure double car garage with automatic roller door and internal access to home
- * Ducted Reverse Cycle Air Conditioning throughout
- * 2,000sqm (approx.) easement free allotment

An abundance of bedrooms, bathrooms, living spaces and more, this one certainly caters to even the largest of families! Additionally, with all amenities nearby and primely located in a quiet pocket of the highly sought-after suburb of Greenwith, this one is sure to be a winner amongst buyers out there in the marketplace. Contact Craig Ricciuto on 0417 806 329 today!

All information provided has been obtained from sources we believe to be accurate, however, we cannot guarantee the information is accurate and we accept no liability for any errors or omissions (including but not limited to a property's land size, floor plans and size, building age and condition). Interested parties should make their own enquiries and obtain their own legal and financial advice. Should this property be scheduled for auction, the Vendor's Statement may be inspected at either of our two LJ Hooker Property Specialists Real Estate offices for 3 consecutive business days immediately preceding the auction and at the auction for 30 minutes before it starts.

RLA 208516

More About this Property

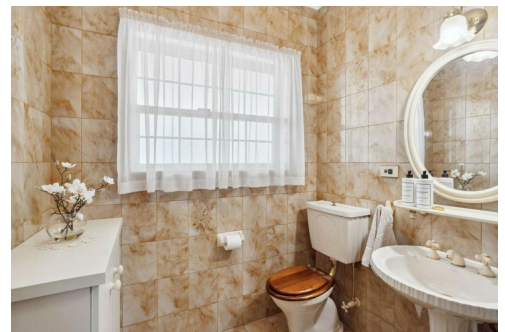
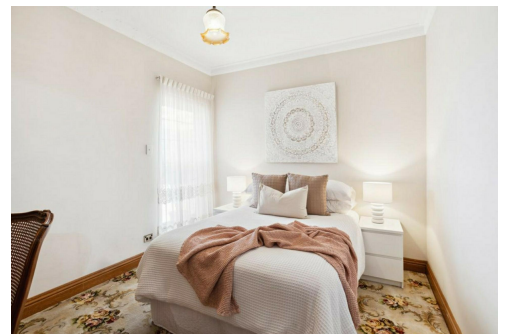
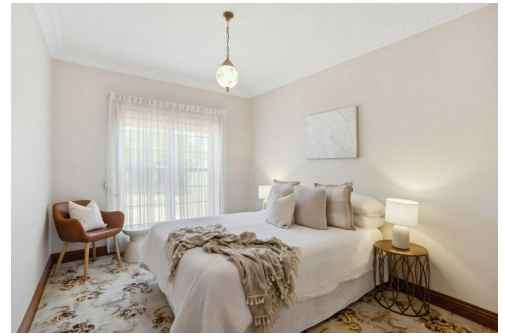
| | |
|----------------------|--|
| Property ID | 2B7RGJU |
| Property Type | House |
| House Size | 315 m2 |
| Land Area | 2000 m2 |
| Including | Air Conditioning Ducted Cooling Ducted Heating Tennis Court Dishwasher Outdoor Entertaining Built-in-Robes |

Craig Ricciuto 0417 806 329

Managing Partner | Sales Specialist | craig@ljhsales.com.au

LJ Hooker Greenwith | Golden Grove | Mawson Lakes | Modbury (08) 8289 6660

North East, Shop 2, 1007 North East Road, RIDGEHAVEN SA 5097
greenwithgoldengrove.ljhooker.com.au | info@ljhsupport.com.au



Disclaimer: All information contained therein is gathered from relevant third parties sources. We cannot guarantee or give any warranty about the information provided. Interested parties must rely solely on their own enquiries.

**LJ Hooker Greenwith | Golden Grove
| Mawson Lakes | Modbury
(08) 8289 6660**



Scale in metres. This drawing is for illustration purposes only. All measurements are approximate and details intended to be relied upon should be independently verified.

Produced by The Fotobase Group