

Greenwith, 5 Mitre Place

BEAUTIFUL FREESTONE FRONTED FAMILY HOME

Auction Location: Onsite

Welcome to 5 Mitre Place Greenwith, a lovely 4 bedroom family home that boasts an allotment of 867m2(approx.) double garage with a side access, great undercover entertaining, all this within easy access to the local shops, public transport and local schools both public & private.

Features include:

- * 4 bedrooms
- * Master bedroom with bay window, ensuite & walk-in robe
- * Built-in robes to bedrooms 2,3 & 4
- * Entertainers kitchen with breakfast bar
- * Large light filled meals & family room



Disclaimer: All information contained therein is gathered from relevant third parties sources. We cannot guarantee or give any warranty about the information provided. Interested parties must rely solely on their own enquiries.

4 2 2

For Sale

Auction (\$900,000)

View

ljhooker.com.au/2ADNGJU

Contact

Craig Ricciuto

0417 806 329

craigr@ljhsales.com.au

**LJ Hooker Greenwith | Golden Grove
| Mawson Lakes | Modbury
(08) 8289 6660**

- * Front lounge with gas fire heater
- * Separate dining room or study
- * Great undercover entertaining area
- * Beautiful back yard for the kids to play or add that large shed
- * Double garage with auto panel lift door
- * Drive through access to the rear

A great family home ready for you to move straight in and enjoy.

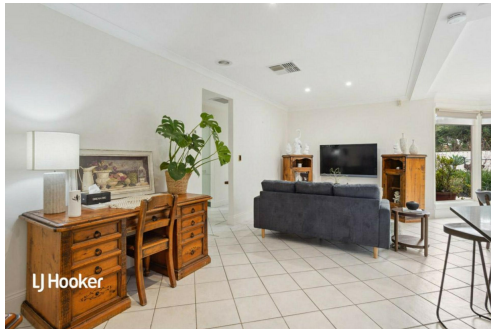
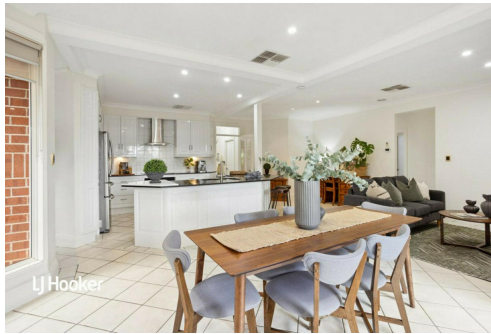
All information provided has been obtained from sources we believe to be accurate, however, we cannot guarantee the information is accurate and we accept no liability for any errors or omissions (including but not limited to a property's land size, floor plans and size, building age and condition). Interested parties should make their own enquiries and obtain their own legal and financial advice. Should this property be scheduled for auction, the Vendor's Statement may be inspected at either of our two LJ Hooker Property Specialists Real Estate offices for 3 consecutive business days immediately preceding the auction and at the auction for 30 minutes before it starts. RLA 208516

More About this Property

Property ID	2ADNGJU
Property Type	House
House Size	230 m²
Land Area	867 m²
Including	Air Conditioning Ducted Cooling Ducted Heating Evaporative Cooling Alarm Dishwasher Outdoor Entertaining Built-in-Robes Secure Parking Remote Garage

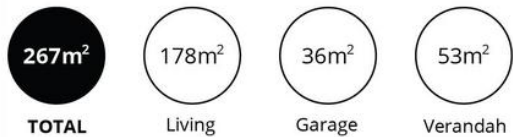
Craig Ricciuto 0417 806 329
 Managing Partner | Sales Specialist | craigr@ljhsales.com.au

LJ Hooker Greenwith | Golden Grove | Mawson Lakes | Modbury (08) 8289 6660
 North East, Shop 2, 1007 North East Road, RIDGEHAVEN SA 5097
greenwithgoldengrove.ljhooker.com.au | info@ljhsupport.com.au



Disclaimer: All information contained therein is gathered from relevant third parties sources. We cannot guarantee or give any warranty about the information provided. Interested parties must rely solely on their own enquiries.

**LJ Hooker Greenwith | Golden Grove
 | Mawson Lakes | Modbury
 (08) 8289 6660**



Scale in metres. This drawing is for illustration purposes only. All measurements are approximate and details intended to be relied upon should be independently verified.

Produced by The Fotobase Group