

Greenwith, 5 Boyce Court

Ideal for the growing family in a peaceful location!



Auction Location: Onsite

AUCTION - Onsite, Saturday the 13th of July at 11:00am

Nestled at the serene end of a quiet court, this charming bluestone fronted, four-bedroom home, built in 1996, offers an idyllic retreat for the first home buyer or growing family. Set on a generous 613sqm (approx.) allotment, this home boasts a flexible floorplan with two separate living areas, providing ample space for relaxation and entertaining. The recently updated kitchen, featuring contemporary black fixtures and fittings, 5-burner gas cooktop, and stainless-steel appliances, seamlessly overlooks the family and meals area, creating a harmonious flow for everyday living.

Outdoors, the home continues to impress with a pitched pergola, perfect for alfresco dining and entertaining, complemented by lush lawn where children and pets can play freely.



Disclaimer: All information contained therein is gathered from relevant third parties sources. We cannot guarantee or give any warranty about the information provided. Interested parties must rely solely on their own enquiries.

For Sale

Auction (\$820,000)

View

ljhooker.com.au/2AF7GJU

Contact

Carla Doecke

0456 830 122

carlad@ljhsales.com.au

Craig Ricciuto

0417 806 329

craigr@ljhsales.com.au

**LJ Hooker Greenwith | Golden Grove
| Mawson Lakes | Modbury
(08) 8289 6660**

Features you will love:

- * Four bedrooms, master with walk-in robe and ensuite
- * Built-in robes in bedroom two and four
- * Recently updated contemporary kitchen with gas cooktop and stainless-steel appliances
- * Downlights throughout living areas creating a warm and inviting ambiance
- * Ducted reverse cycle air-conditioning offering comfort year round
- * Outdoor entertaining with well-maintained gardens and plenty of space for kids to enjoy
- * Double car width carport and powered shed, perfect for storage or hobbyists
- * Gas hot water

Conveniently located near Greenwith Primary and Our Lady of Hope School, as well as public transport and the Stables Shopping Centre, this property offers prime access to essential amenities. A short walk to Petworth Lakes Ponds and Reuben Park further enhances the appeal, making it an ideal location for a variety of needs.

Make sure this one is on the top of your inspection list!

All information provided has been obtained from sources we believe to be accurate, however, we cannot guarantee the information is accurate and we accept no liability for any errors or omissions (including but not limited to a property's land size, floor plans and size, building age and condition). Interested parties should make their own enquiries and obtain their own legal and financial advice. Should this property be scheduled for auction, the Vendor's Statement may be inspected at either of our two LJ Hooker Property Specialists Real Estate offices for 3 consecutive business days immediately preceding the auction and at the auction for 30 minutes before it starts.

RLA 208516

More About this Property

Property ID	2AF7GJU
Property Type	House
House Size	205 m ²
Land Area	613 m ²
Including	Ducted Cooling Ducted Heating Dishwasher Outdoor Entertaining Built-in-Robes Fully Fenced

Carla Doecke 0456 830 122

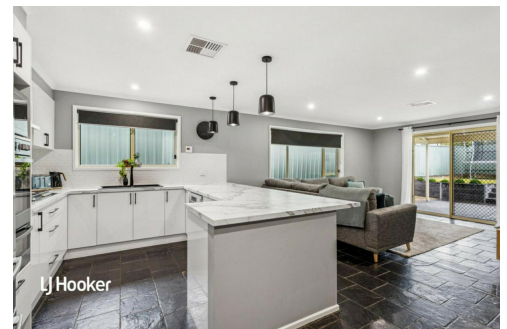
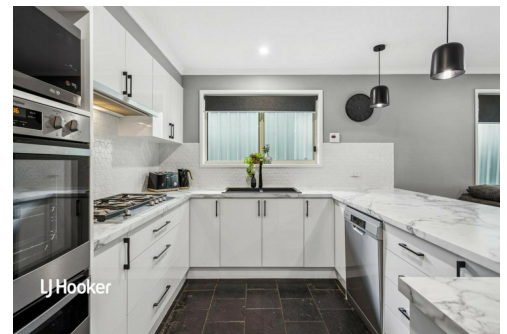
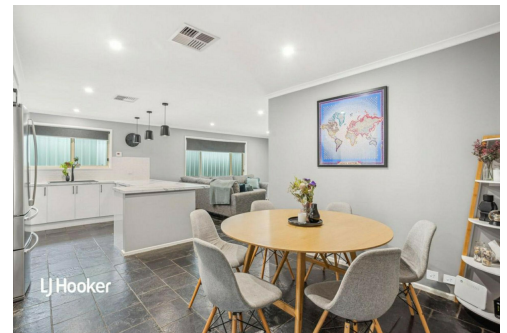
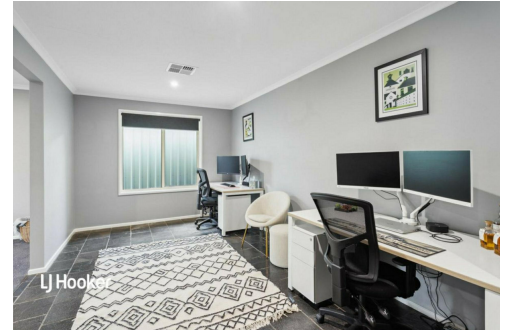
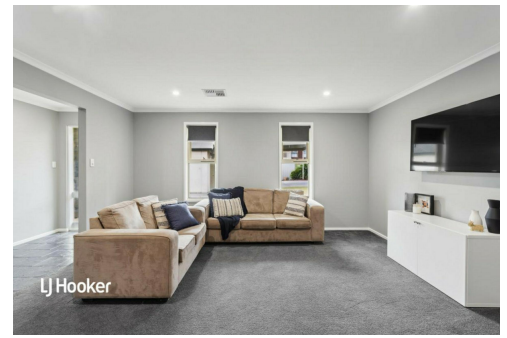
Sales Specialist | carlad@ljhsales.com.au

Craig Ricciuto 0417 806 329

Managing Partner | Sales Specialist | craigr@ljhsales.com.au

LJ Hooker Greenwith | Golden Grove | Mawson Lakes | Modbury (08) 8289 6660

North East, Shop 2, 1007 North East Road, RIDGEHAVEN SA 5097
greenwithgoldengrove.ljhooker.com.au | info@ljhsupport.com.au

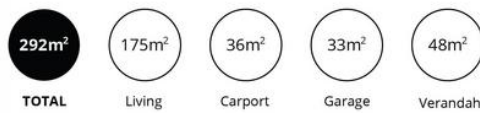


Disclaimer: All information contained therein is gathered from relevant third parties sources. We cannot guarantee or give any warranty about the information provided. Interested parties must rely solely on their own enquiries.

**LJ Hooker Greenwith | Golden Grove
| Mawson Lakes | Modbury
(08) 8289 6660**



NOT IN POSITION



Scale in metres. This drawing is for illustration purposes only. All measurements are approximate and details intended to be relied upon should be independently verified. Produced by The Fotobase Group