

## Greenwith, 4 Toulon Place

DON'T TAKE TOO-LONG TO LOOK AT THIS ONE!!

Welcome to 4 Toulon Place, Greenwith!

A great family home that has been tastefully updated over time, large undercover entertaining area, carparking for 5-6 vehicles and a good size back yard for the kids and pets to play.

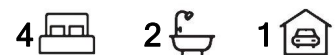
Features include

- \* 4 Bedrooms
- \* Master with built-in robe and ensuite
- \* Light filled lounge and dining
- \* Updated kitchen with s/steel appliances
- \* Meals and family room
- \* Centrally located updated main bathroom
- \* Heating and cooling
- \* Single garage with drive through access



**Disclaimer:** All information contained therein is gathered from relevant third parties sources.

We cannot guarantee or give any warranty about the information provided. Interested parties must rely solely on their own enquiries.



**For Sale**

\$795,000 - \$849,000

**View**

[ljhooker.com.au/2AV6GJU](http://ljhooker.com.au/2AV6GJU)

**Contact**

**Craig Ricciuto**

0417 806 329

[craig@ljhsales.com.au](mailto:craig@ljhsales.com.au)

**LJ Hooker Greenwith | Golden Grove  
| Mawson Lakes | Modbury  
(08) 8289 6660**

- \* Large pitched undercover entertaining
- \* Great size rear yard for the kids and pets to play
- \* Ample off-street parking

Situated at the end of a very quiet Court, with room to park you boat or caravan, easy access to the local shops and public transport. A great opportunity to secure your family home or add this one to your investment portfolio.

All information provided has been obtained from sources we believe to be accurate, however, we cannot guarantee the information is accurate and we accept no liability for any errors or omissions (including but not limited to a property's land size, floor plans and size, building age and condition). Interested parties should make their own enquiries and obtain their own legal and financial advice. Should this property be scheduled for auction, the Vendor's Statement may be inspected at either of our two LJ Hooker Property Specialists Real Estate offices for 3 consecutive business days immediately preceding the auction and at the auction for 30 minutes before it starts.

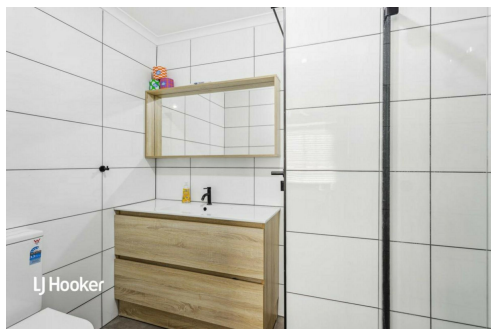
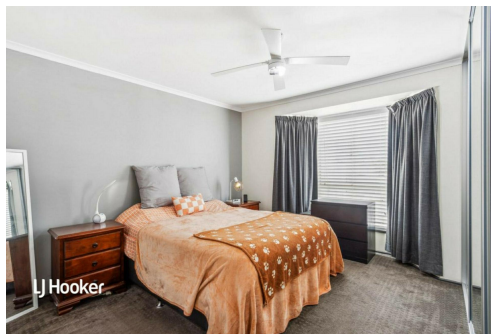
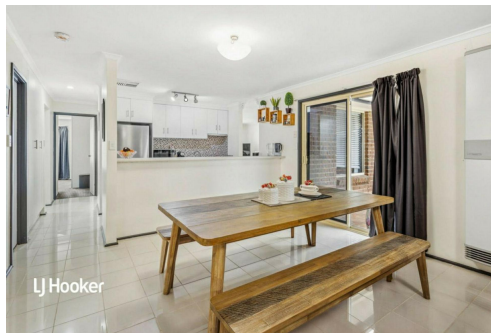
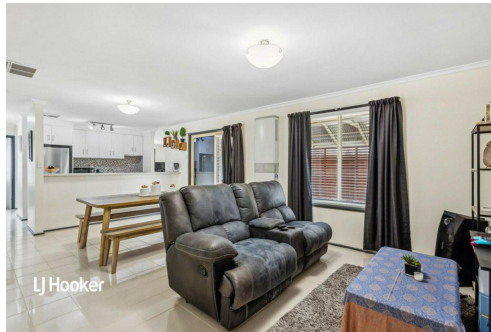
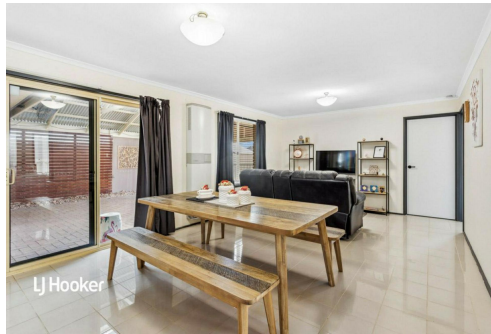
RLA 208516

## More About this Property

Property ID	2AV6GJU
Property Type	House
House Size	160 m²
Land Area	603 m²
Including	Air Conditioning Ducted Cooling Evaporative Cooling Dishwasher Outdoor Entertaining Built-in-Robes Solar Panels

**Craig Ricciuto 0417 806 329**  
 Managing Partner | Sales Specialist | [craigr@ljhsales.com.au](mailto:craigr@ljhsales.com.au)

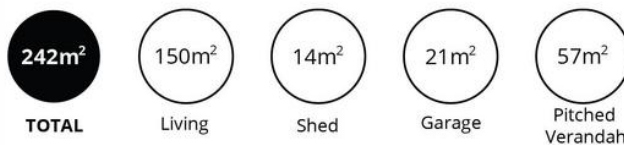
**LJ Hooker Greenwith | Golden Grove | Mawson Lakes | Modbury (08) 8289 6660**  
 North East, Shop 2, 1007 North East Road, RIDGEHAVEN SA 5097  
[greenwithgoldengrove.ljhooker.com.au](http://greenwithgoldengrove.ljhooker.com.au) | [info@ljhsupport.com.au](mailto:info@ljhsupport.com.au)



**Disclaimer:** All information contained therein is gathered from relevant third parties sources. We cannot guarantee or give any warranty about the information provided. Interested parties must rely solely on their own enquiries.

**LJ Hooker Greenwith | Golden Grove  
 | Mawson Lakes | Modbury  
 (08) 8289 6660**





Scale in metres. This drawing is for illustration purposes only. All measurements are approximate and details intended to be relied upon should be independently verified.

Produced by **The Fotobase Group**