



32 Featherstone Circuit, Greenwith

Charming Cottage Living

Welcome to 32 Featherstone Circuit! A delightful 3- bedroom cottage offering light-filled living and easy care comfort in one of Greenwith's most loved pockets.

Enjoy bright open-plan meals and family area that flows through to the well-equipped kitchen complete with hand breakfast bar. The bathroom includes a separate toilet for convenience, while outside you'll find a pitched undercover entertaining area perfect for weekend BBQ's and relaxed gatherings.




Features include

- Three bedrooms
- Built-in robes and ceiling fans to bedrooms 1 and 2
- Kitchen with breakfast bar and ample cupboard space
- Light filled meals and family room
- Pitched undercover entertaining
- Easy-care front and rear gardens
- Single carport with drive through access

Enjoy the low maintenance lifestyle this sought after location provides- close to schools, shops and public transport.

Ideal for the first home buyers, down sizers or savvy investors- this ones a must to see.

All information contained therein is gathered from relevant third parties sources. We cannot guarantee or give any warranty about the information provided. Interested parties must rely solely on their own enquiries.

3  1  1 

FOR SALE

Best Offers by November 17th at 11:00am USP

AGENTS

Craig Ricciuto
0417 806 329
craigr@ljhsales.com.au

AGENCY

LJ Hooker Property Specialists
(08) 8289 6660



All information provided has been obtained from sources we believe to be accurate, however, we cannot guarantee the information is accurate and we accept no liability for any errors or omissions (including but not limited to a property's land size, floor plans and size, building age and condition). Interested parties should make their own enquiries and obtain their own legal and financial advice. Should this property be scheduled for auction, the Vendor's Statement may be inspected at our LJ Hooker Property Specialists Real Estate office for 3 consecutive business days immediately preceding the auction and at the auction for 30 minutes before it starts.

RLA 208516

MORE DETAILS

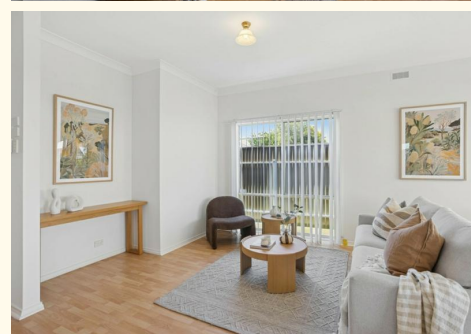
Property ID	2CGRGJU
Property Type	House
House Size	105 m2
Land Area	249 m2
Including	Evaporative Cooling Built-in-Robes

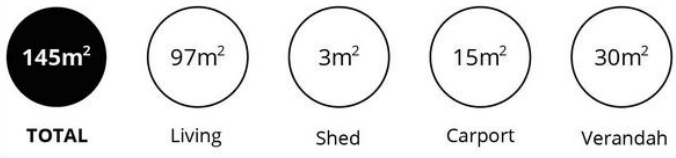
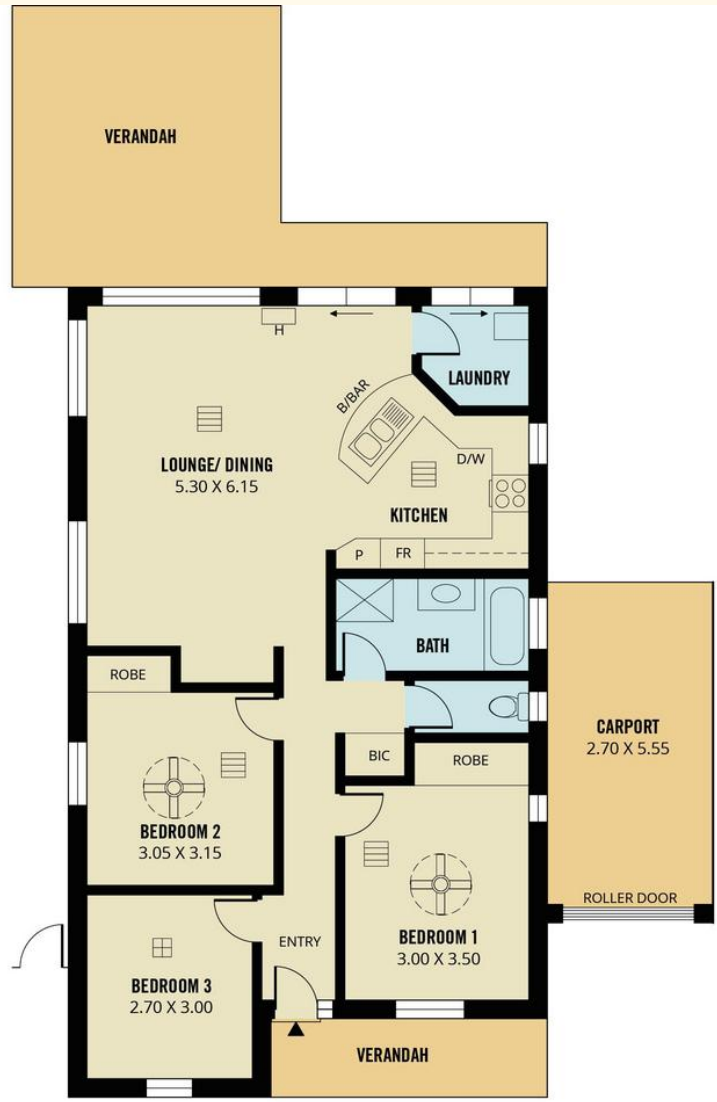
Craig Ricciuto 0417 806 329

Managing Partner | Sales Specialist | craig@ljhsales.com.au

LJ Hooker Property Specialists (08) 8289 6660

Shop 2, 1007 North East Road, RIDGEHAVEN SA 5097
propertyspecialists.ljhooker.com.au | info@ljhsupport.com.au





Scale in metres. This drawing is for illustration purposes only. All measurements are approximate and details intended to be relied upon should be independently verified.

Produced by **The Fotobase Group**

All information contained therein is gathered from relevant third parties sources. We cannot guarantee or give any warranty about the information provided. Interested parties must rely solely on their own enquiries.

