



31 Samuel Court, Greenwith

A Standout Family Entertainer with Cathedral Style and Poolside Appeal


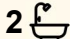
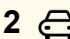
Perfectly positioned in a quiet court in ever-popular Greenwith, this impressive family home offers the space, warmth and lifestyle you've been searching for.

Boasting 4-5 generous bedrooms, the home is designed for comfortable family living with multiple living zones to suit every stage of life. The master suite features a luxe ensuite, creating a relaxing retreat at the end of the day.

At the heart of the home is a beautiful solid timber kitchen, perfectly positioned to overlook the casual meals and lounge area, while the light-filled family room provides a welcoming space for everyday living.

For those who love to entertain or simply enjoy extra room to spread out, the cathedral-style games/family/entertainment room is a standout feature, offering incredible space and character.

Step outside and you'll find everything needed for year-round enjoyment. The undercover entertaining area overlooks a sparkling

5  2  2 

FOR SALE

Please Call

AGENTS

Craig Ricciuto

0417 806 329

craigr@ljhsales.com.au

AGENCY

LJ Hooker Property Specialists

(08) 8289 6660

All information contained therein is gathered from relevant third parties sources. We cannot guarantee or give any warranty about the information provided. Interested parties must rely solely on their own enquiries.

 **LJ Hooker**

inground swimming pool complete with shade, creating the perfect setting for summer fun with family and friends. The generous lawn and garden area provides plenty of space for the kids and pets to play.

Adding to the appeal is ample parking on the exposed aggregate driveway, offering both practicality and great street presence.

Homes with this much flexibility, character and lifestyle appeal are rare to find.
This is something special you've been waiting for!

All information provided has been obtained from sources we believe to be accurate, however, we cannot guarantee the information is accurate and we accept no liability for any errors or omissions (including but not limited to a property's land size, floor plans and size, building age and condition). Interested parties should make their own enquiries and obtain their own legal and financial advice. Should this property be scheduled for auction, the Vendor's Statement may be inspected at our LJ Hooker Property Specialists Real Estate office for 3 consecutive business days immediately preceding the auction and at the auction for 30 minutes before it starts.
RLA 208516

MORE DETAILS

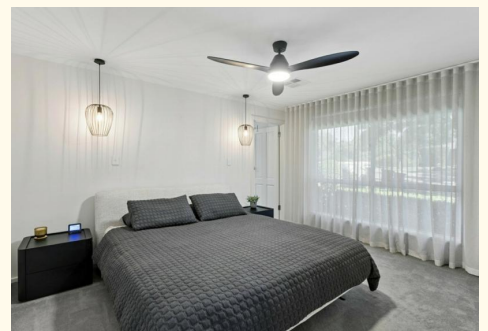
Property ID	2D3MGJU
Property Type	House
House Size	234 m2
Land Area	794 m2
Including	Air Conditioning Pool

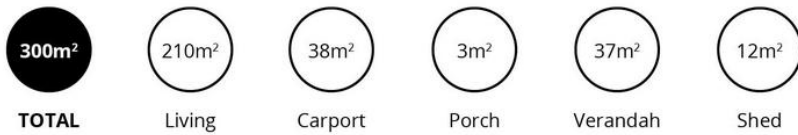
Craig Ricciuto 0417 806 329

Managing Partner | Sales Specialist | craig@ljhsales.com.au

LJ Hooker Property Specialists (08) 8289 6660

Shop 2, 1007 North East Road, RIDGEHAVEN SA 5097
propertyspecialists.ljhooker.com.au | info@ljhsupport.com.au





Scale in metres. This drawing is for illustration purposes only. All measurements are approximate and details intended to be relied upon should be independently verified.

Produced by The Fotobase Group

All information contained therein is gathered from relevant third parties sources. We cannot guarantee or give any warranty about the information provided. Interested parties must rely solely on their own enquiries.