

## Greenwith, 3 Milford Court

### AN UNTOUCHED GEM



AUCTION: Onsite, Saturday the 16th of November at 10:00am

Welcome to 3 Milford Court, Greenwith! On offer is an excellent opportunity for you to purchase a great family home that you can update and renovate to your liking. Boasting a land size of approximately 924sqm, with a three car driveway and a carport to park your boat/van or even add that workshop you've been looking for.

Features include

- \* Four bedrooms
- \* Master with walk-in robe and ensuite
- \* Well-proportioned bedrooms two, three and four
- \* Formal lounge and dining
- \* Open-plan kitchen with breakfast bar
- \* Large family and games room



**Disclaimer:** All information contained therein is gathered from relevant third parties sources. We cannot guarantee or give any warranty about the information provided. Interested parties must rely solely on their own enquiries.

**For Sale**  
\$895,000

**View**  
[ljhooker.com.au/2AZ4GJU](http://ljhooker.com.au/2AZ4GJU)

**Contact**  
**Craig Ricciuto**  
0417 806 329  
[craigr@ljhsales.com.au](mailto:craigr@ljhsales.com.au)

**LJ Hooker Greenwith | Golden Grove  
| Mawson Lakes | Modbury  
(08) 8289 6660**

- \* Double carport with drive through access
- \* Undercover verandah and pitched pergola entertaining
- \* 3rd carport to park your caravan or boat
- \* Ample yard space for the kids and pets to play

All this and still walking distance to the local Highland Village shopping Centre, public transport and all the schools including both public and private. Make sure this one is on your shopping list!

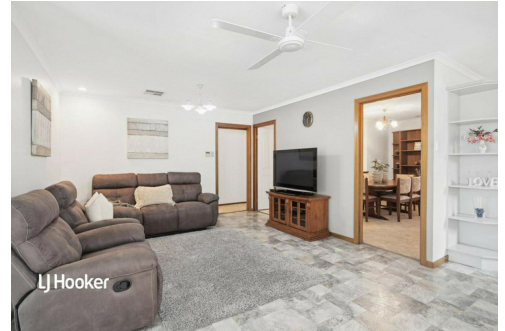
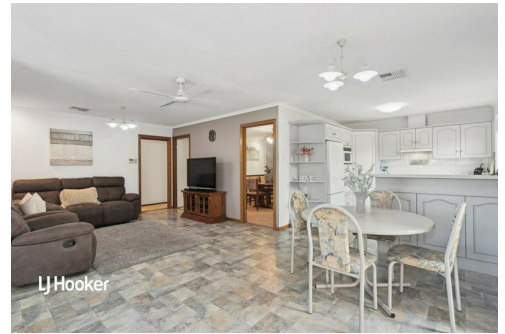
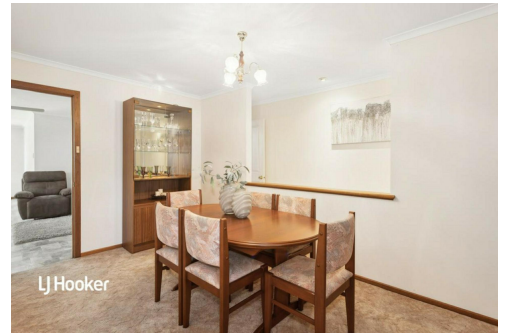
All information provided has been obtained from sources we believe to be accurate, however, we cannot guarantee the information is accurate and we accept no liability for any errors or omissions (including but not limited to a property's land size, floor plans and size, building age and condition). Interested parties should make their own enquiries and obtain their own legal and financial advice. Should this property be scheduled for auction, the Vendor's Statement may be inspected at either of our two LJ Hooker Property Specialists Real Estate offices for 3 consecutive business days immediately preceding the auction and at the auction for 30 minutes before it starts.

## More About this Property

<b>Property ID</b>	2AZ4GJU
<b>Property Type</b>	House
<b>House Size</b>	207 m <sup>2</sup>
<b>Land Area</b>	924 m <sup>2</sup>
<b>Including</b>	Air Conditioning Ducted Cooling Dishwasher Outdoor Entertaining Built-in-Robes Secure Parking Remote Garage

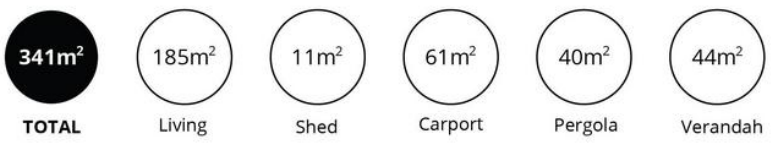
**Craig Ricciuto 0417 806 329**  
Managing Partner | Sales Specialist | [craig@ljhsales.com.au](mailto:craig@ljhsales.com.au)

**LJ Hooker Greenwith | Golden Grove | Mawson Lakes | Modbury (08) 8289 6660**  
North East, Shop 2, 1007 North East Road, RIDGEHAVEN SA 5097  
[greenwithgoldengrove.ljhooker.com.au](http://greenwithgoldengrove.ljhooker.com.au) | [info@ljhsupport.com.au](mailto:info@ljhsupport.com.au)



**Disclaimer:** All information contained therein is gathered from relevant third parties sources. We cannot guarantee or give any warranty about the information provided. Interested parties must rely solely on their own enquiries.

**LJ Hooker Greenwith | Golden Grove  
| Mawson Lakes | Modbury  
(08) 8289 6660**



Scale in metres. This drawing is for illustration purposes only. All measurements are approximate and details intended to be relied upon should be independently verified.

Produced by The Fotobase Group