

Greenwith, 2 Waterfield Lane

Stunning Family Home with Breathtaking Views!

5  2  2 

For Sale
\$1,189,000 - \$1,289,000

View
ljhooker.com.au/2BK8GJU

Contact
Craig Ricciuto
0417 806 329
craig@ljhsales.com.au

Welcome to 2 Waterfield Lane Greenwith, a home that offers a perfect blend of modern comfort and serene hillside living!

Nestled in a peaceful cul-de-sac, this beautifully updated 5-bedroom home is ideal for families seeking both style and functionality.

Features include:

- * 5 bedrooms
- * Large master with ensuite, walk in and lovely hills views
- * Built-in robes in bedrooms 2, 3 and 4
- * Upstairs lounge room with views of Para Wirra reservoir
- * Entertainers kitchen with breakfast bar and Miele appliances
- * Light filled family meals
- * Downstairs powder room
- * Family room with lovely views



Disclaimer: All information contained therein is gathered from relevant third parties sources. We cannot guarantee or give any warranty about the information provided. Interested parties must rely solely on their own enquiries.

LJ Hooker Greenwith | Golden Grove
| Mawson Lakes | Modbury
(08) 8289 6660

- * Separate lounge/theatre room
- * Great games or rumpus room
- * Pitched undercover entertaining area
- * Lawn area for the kids/pets to play
- * Double garage with internal entry
- * Complete roof restoration in 2024
- * Ample driveway parking
- * NBN fibre to the premises

This property is in a prime location! Don't miss the opportunity to secure this exceptional family home.

All information provided has been obtained from sources we believe to be accurate, however, we cannot guarantee the information is accurate and we accept no liability for any errors or omissions (including but not limited to a property's land size, floor plans and size, building age and condition). Interested parties should make their own enquiries and obtain their own legal and financial advice. Should this property be scheduled for auction, the Vendor's Statement may be inspected at either of our two LJ Hooker Property Specialists Real Estate offices for 3 consecutive business days immediately preceding the auction and at the auction for 30 minutes before it starts.

RLA 208516

More About this Property

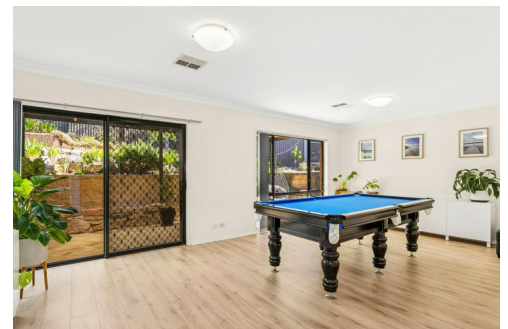
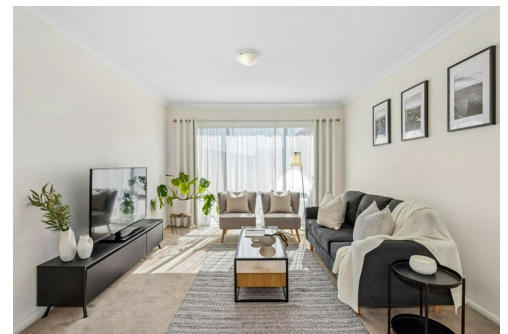
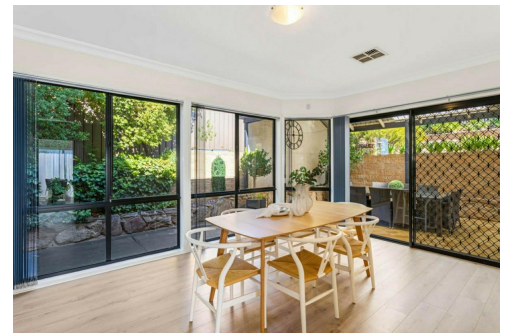
Property ID	2BK8GJU
Property Type	House
House Size	323 m2
Land Area	830 m2
Including	Ensuite Air Conditioning Ducted Cooling Ducted Heating Alarm Dishwasher Outdoor Entertaining Built-in-Robes Remote Garage

Craig Ricciuto 0417 806 329

Managing Partner | Sales Specialist | craig@ljhsales.com.au

LJ Hooker Greenwith | Golden Grove | Mawson Lakes | Modbury (08) 8289 6660

North East, Shop 2, 1007 North East Road, RIDGEHAVEN SA 5097
greenwithgoldengrove.ljhooker.com.au | info@ljhsupport.com.au



Disclaimer: All information contained therein is gathered from relevant third parties sources. We cannot guarantee or give any warranty about the information provided. Interested parties must rely solely on their own enquiries.

**LJ Hooker Greenwith | Golden Grove
 | Mawson Lakes | Modbury
 (08) 8289 6660**



WATERFIELD LANE

SITE PLAN
(NOT TO SCALE)

Scale in metres. This drawing is for illustration purposes only. All measurements are approximate and details intended to be relied upon should be independently verified.

Produced by The Fotobase Group



**LJ Hooker Greenwith | Golden Grove
| Mawson Lakes | Modbury
(08) 8289 6660**

Disclaimer: All information contained therein is gathered from relevant third parties sources. We cannot guarantee or give any warranty about the information provided. Interested parties must rely solely on their own enquiries.