



2 Gilchrist Close, Greenwith

## Just Beautiful!

Welcome to a family home where there is nothing left to do except move in, sit back and relax and start enjoying this comfortable lifestyle from the very beginning.

Offering a perfect balance of formal and informal living spaces, not only on the inside but outside in the beautiful outdoor alfresco area.

Features included:

- Four double bedrooms, master with ensuite and walk in robe
- Formal lounge room and dining
- Open plan kitchen, meals and additional family room
- A trio of outdoor glass sliding doors take you out to the partially enclosed alfresco area offering buffet, bar fridge, heaters and TV
- Double lock up garage, immaculate gardens both front and rear
- Reverse cycle ducted air conditioning, alarm system and large solar system

Add the outstanding location to the mix, where walking trails, schools both public and private and convenient shopping options are just moments away.

Enquire today as this one will not last!

All information provided has been obtained from sources we believe

All information contained therein is gathered from relevant third parties sources. We cannot guarantee or give any warranty about the information provided. Interested parties must rely solely on their own enquiries.

4 🏠 2 🚿 2 🚗

### FOR SALE

\$1,000,000 - \$1,100,000

### AGENTS

Craig Ricciuto  
0417 806 329  
craigr@ljhsales.com.au

Michael Fenn  
0405 157 840  
michaelf@ljhsales.com.au

### AGENCY

LJ Hooker Property Specialists  
(08) 8289 6660

 LJ Hooker

to be accurate, however, we cannot guarantee the information is accurate and we accept no liability for any errors or omissions (including but not limited to a property's land size, floor plans and size, building age and condition). Interested parties should make their own enquiries and obtain their own legal and financial advice. Should this property be scheduled for auction, the Vendor's Statement may be inspected at our LJ Hooker Property Specialists Real Estate office for 3 consecutive business days immediately preceding the auction and at the auction for 30 minutes before it starts.  
RLA 208516

## MORE DETAILS

Property ID	2CJGGJU
Property Type	House
House Size	197 m2
Land Area	661 m2

### **Craig Ricciuto 0417 806 329**

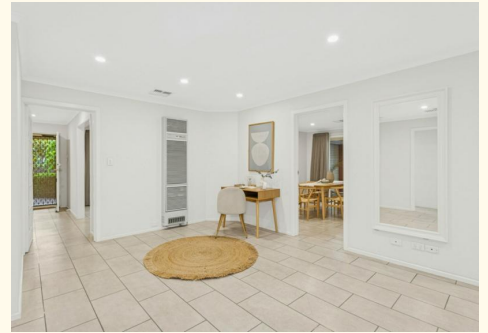
Managing Partner | Sales Specialist | [craigr@ljhsales.com.au](mailto:craigr@ljhsales.com.au)

### **Michael Fenn 0405 157 840**

Managing Director | Auctioneer | [michaelf@ljhsales.com.au](mailto:michaelf@ljhsales.com.au)

### **LJ Hooker Property Specialists (08) 8289 6660**

Shop 2, 1007 North East Road, RIDGEHAVEN SA 5097  
[propertyspecialists.ljhooker.com.au](http://propertyspecialists.ljhooker.com.au) | [info@ljhsupport.com.au](mailto:info@ljhsupport.com.au)





Scale in metres. This drawing is for illustration purposes only. All measurements are approximate and details intended to be relied upon should be independently verified.

Produced by **The Fotobase Group**