

## Greenwith, 19 Shackleton Court

### LARGE UPDATED FAMILY HOME!

Welcome to 19 Shackleton Cres Greenwith, a lovely family home with updated kitchen and bathrooms, multiple living areas, well-proportioned bedroom sizes and great undercover entertaining area.

Features include:

- \* 4 bedrooms
- \* Large master with en-suite and walk-in robe
- \* Built-in robes to 2,3 and 4
- \* Lovely entertainers' kitchen with breakfast bar
- \* Separate parents lounge room
- \* Family meals
- \* Games or rumpus room
- \* Heating and cooling
- \* 6.6 kw solar system

4 2 2

**For Sale**  
\$849,000 - \$899,000

**View**  
[ljhooker.com.au/2A4VGJU](http://ljhooker.com.au/2A4VGJU)

**Contact**  
**Craig Ricciuto**  
0417 806 329  
[craig@ljhsales.com.au](mailto:craig@ljhsales.com.au)



**Disclaimer:** All information contained therein is gathered from relevant third parties sources. We cannot guarantee or give any warranty about the information provided. Interested parties must rely solely on their own enquiries.

**LJ Hooker Greenwith | Golden Grove**  
**| Mawson Lakes | Modbury**  
**(08) 8289 6660**

- \* Large double garage with extra storage
- \* Good size yard for the kids and pets to play

A home that is ready for you just to move in and enjoy this great home in a great location.

All information provided has been obtained from sources we believe to be accurate, however, we cannot guarantee the information is accurate and we accept no liability for any errors or omissions (including but not limited to a property's land size, floor plans and size, building age and condition). Interested parties should make their own enquiries and obtain their own legal and financial advice. Should this property be scheduled for auction, the Vendor's Statement may be inspected at either of our two LJ Hooker Property Specialists Real Estate offices for 3 consecutive business days immediately preceding the auction and at the auction for 30 minutes before it starts.

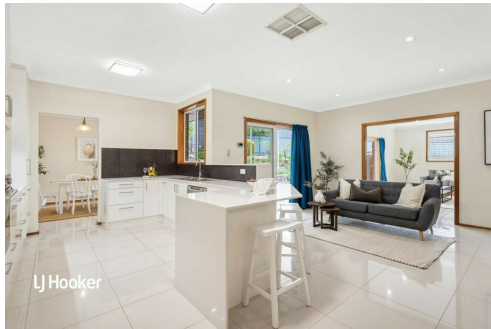
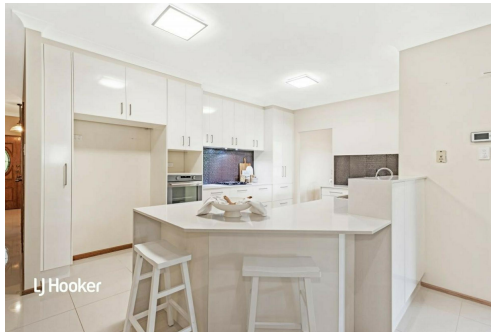
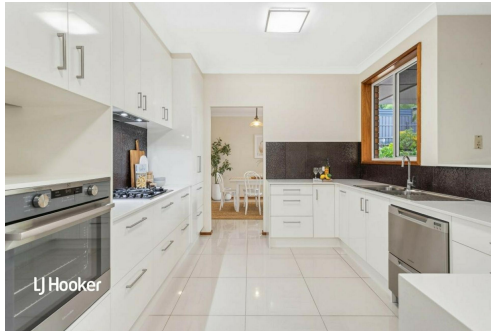
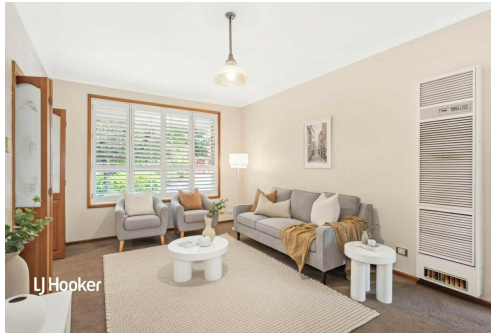
RLA 208516

## More About this Property

Property ID	2A4VGJU
Property Type	House
House Size	256 m²
Land Area	775 m²
Including	Ensuite Air Conditioning Ducted Cooling Toilets (2) Alarm Dishwasher Outdoor Entertaining Built-in-Robes Secure Parking Remote Garage

**Craig Ricciuto 0417 806 329**  
 Managing Partner | Sales Specialist | [craigr@ljhsales.com.au](mailto:craigr@ljhsales.com.au)

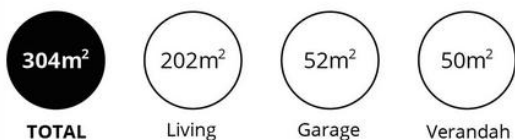
**LJ Hooker Greenwith | Golden Grove | Mawson Lakes | Modbury (08) 8289 6660**  
 North East, Shop 2, 1007 North East Road, RIDGEHAVEN SA 5097  
[greenwithgoldengrove.ljhooker.com.au](mailto:greenwithgoldengrove.ljhooker.com.au) | [info@ljhsupport.com.au](mailto:info@ljhsupport.com.au)



**Disclaimer:** All information contained therein is gathered from relevant third parties sources. We cannot guarantee or give any warranty about the information provided. Interested parties must rely solely on their own enquiries.

**LJ Hooker Greenwith | Golden Grove  
 | Mawson Lakes | Modbury  
 (08) 8289 6660**





Scale in metres. This drawing is for illustration purposes only. All measurements are approximate and details intended to be relied upon should be independently verified.

Produced by The Fotobase Group