

19 Samuel Court, Greenwith

Peaceful Reserve-Side Living in a Quiet Court Setting

Tucked away in a tightly held and whisper-quiet court and backing directly onto the ever-popular Cobbler Creek West Reserve, this tastefully updated home offers the perfect blend of comfort, privacy and lifestyle convenience - ideal for first home buyers, downsizers or young families alike.


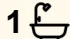
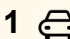
Offering 3 generous bedrooms, the master suite features a walk-in robe and convenient two-way ensuite bathroom, while bedrooms two and three are complete with built-in robes.

At the heart of the home is the beautifully updated 2-pack kitchen, perfectly positioned to overlook the light-filled family meals area and open plan lounge/family room creating a warm and welcoming space for every day living and entertaining.

Step outside and you'll love the pitched undercover entertaining area, ideal for weekend BBQ's or relaxing with friend while enjoying the lovely backyard setting, complete with lawn area and established fruit trees, two garden sheds provide extra storage for tools and hobbies.

Additional Features

All information contained therein is gathered from relevant third parties sources. We cannot guarantee or give any warranty about the information provided. Interested parties must rely solely on their own enquiries.

3  1  1 

FOR SALE
\$795,000 - \$850,000

VIEW
Sun 26th Apr @ 11:00AM - 11:30AM

AGENTS
Craig Ricciuto
0417 806 329
craigr@ljhsales.com.au

AGENCY
LJ Hooker Property Specialists
(08) 8289 6660

 **LJ Hooker**

- Single garage with internal entry
- Evaporative cooling
- Gas ducted heating
- Awesome location
- Freshley painted and tastefully updated

Homes in this location are always in high demand- this is one you won't want to miss!

All information provided has been obtained from sources we believe to be accurate, however, we cannot guarantee the information is accurate and we accept no liability for any errors or omissions (including but not limited to a property's land size, floor plans and size, building age and condition). Interested parties should make their own enquiries and obtain their own legal and financial advice. Should this property be scheduled for auction, the Vendor's Statement may be inspected at our LJ Hooker Property Specialists Real Estate office for 3 consecutive business days immediately preceding the auction and at the auction for 30 minutes before it starts.

RLA 208516

MORE DETAILS

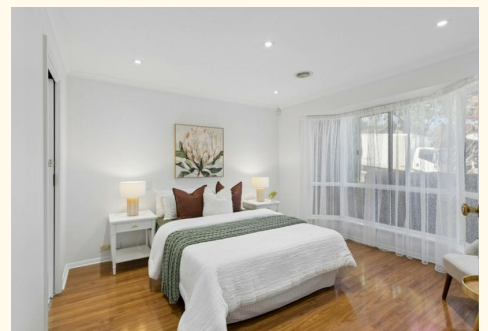
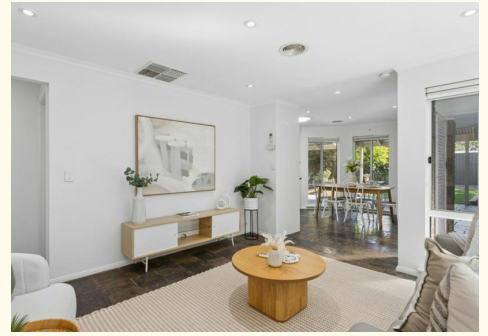
Property ID	2D9EGJU
Property Type	House
House Size	145 m2
Land Area	391 m2
Including	Ensuite

Craig Ricciuto 0417 806 329

Managing Partner | Sales Specialist | craig@ljhsales.com.au

LJ Hooker Property Specialists (08) 8289 6660

Shop 2, 1007 North East Road, RIDGEHAVEN SA 5097
propertyspecialists.ljhooker.com.au | info@ljhsupport.com.au





Scale in metres. This drawing is for illustration purposes only. All measurements are approximate and details intended to be relied upon should be independently verified.

Produced by The Fotobase Group

All information contained therein is gathered from relevant third parties sources. We cannot guarantee or give any warranty about the information provided. Interested parties must rely solely on their own enquiries.