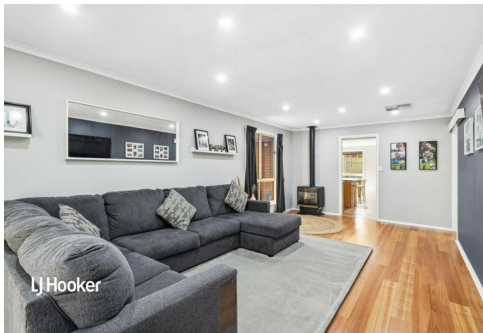
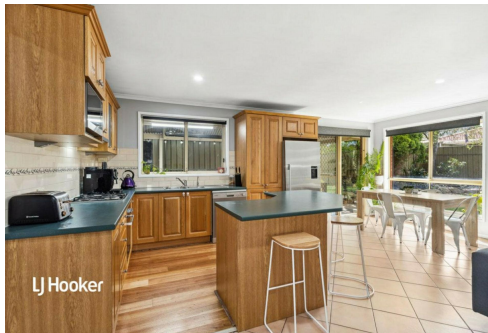




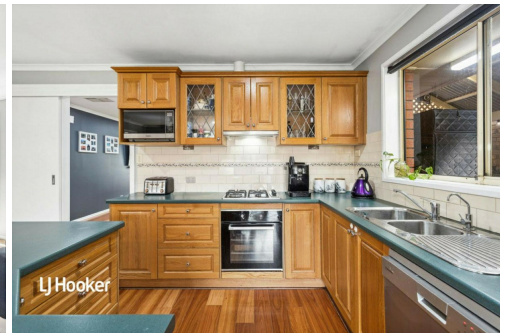
LJ Hooker



LJ Hooker



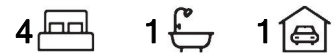
LJ Hooker



LJ Hooker

Greenwith, 16 Hannam Street

Your New Home Awaits!



This home's location speaks for itself situated in this highly desirable pocket of Greenwith where everything you'll ever need is only ever a moment away! Originally constructed in 1993 set on a manageable Torrens titled allotment of approximately 420 SQM, this home is boasting dual living areas and a flexible floor plan and is sure to impress no matter your situation.

Features You'll Love:

- * Master bedroom with built-in robes and ceiling fan
- * Ducted evaporative cooling throughout, ideal for the warmer months
- * Gas heater in the main living area
- * Flexible floor plan with multiple living areas
- * Large kitchen with ample storage, breakfast bar, and gas cooktop
- * Secure undercover parking with carport and automatic roller door
- * Enough lawn for the family pet or the perfect spot for a kids' cricket match!

For Sale

\$649,000 - \$699,000

View

ljhooker.com.au/2AT2GJU

Contact

Ryan Graham

0400 912 287

ryang@ljhsales.com.au

Craig Ricciuto

0417 806 329

craig@ljhsales.com.au



Disclaimer: All information contained therein is gathered from relevant third parties sources.

We cannot guarantee or give any warranty about the information provided. Interested parties must rely solely on their own enquiries.

**LJ Hooker Greenwith | Golden Grove
| Mawson Lakes | Modbury
(08) 8289 6660**

* Undercover entertainment area with a pitched-roof verandah-an ideal spot to host the family BBQ!

* Within walking distance to Greenwith Kindergarten, Greenwith School, and Our Lady of Hope School

Spend your weekends Exploring the gorgeous Cobbler Creek Reserve and the many walking trails on offer, or perhaps your time could be better spent with the family at the nearby Golden Fields Reserve, also conveniently located within a short distance of both The Stables Shopping Centre and The Grove Shopping Centre. Situated a short distance from several schools, both public and private, as well as local sporting clubs, and with public transport options aplenty, commuting to the Adelaide CBD is done with ease.

Our vendors have loved calling 16 Hannam Street home, and we are sure you will too!

You won't want to miss this opportunity-register your interest with Ryan Graham today.

All information provided has been obtained from sources we believe to be accurate, however, we cannot guarantee the information is accurate and we accept no liability for any errors or omissions (including but not limited to a property's land size, floor plans and size, building age and condition). Interested parties should make their own enquiries and obtain their own legal and financial advice. Should this property be scheduled for auction, the Vendor's Statement may be inspected at either of our two LJ Hooker Property Specialists Real Estate offices for 3 consecutive business days immediately preceding the auction and at the auction for 30 minutes before it starts.

RLA 208516

More About this Property

Property ID	2AT2GJU
Property Type	House
House Size	139 m ²
Land Area	420 m ²
Including	Air Conditioning Evaporative Cooling Dishwasher Outdoor Entertaining Built-in-Robes Secure Parking Fully Fenced Remote Garage

Ryan Graham 0400 912 287

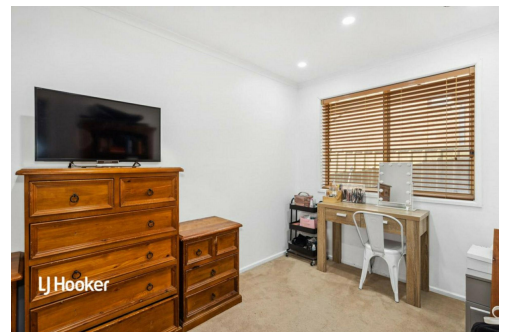
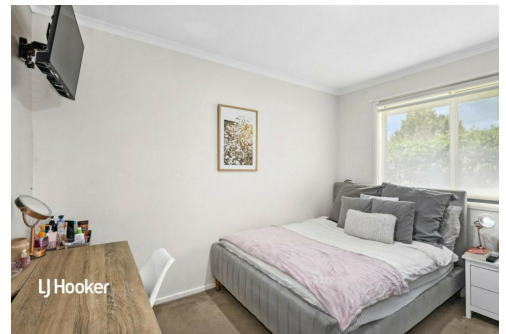
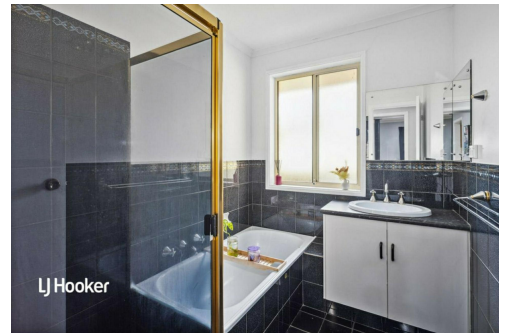
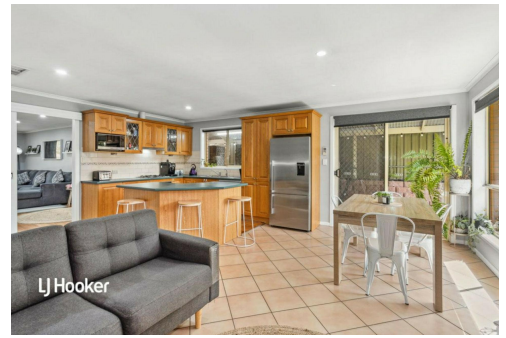
Sales Specialist | ryang@ljhsales.com.au

Craig Ricciuto 0417 806 329

Managing Partner | Sales Specialist | craig@ljhsales.com.au

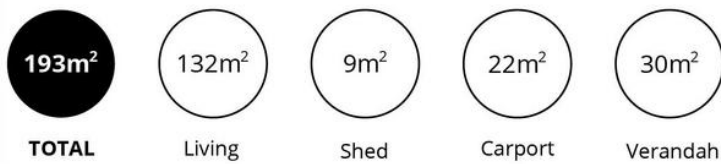
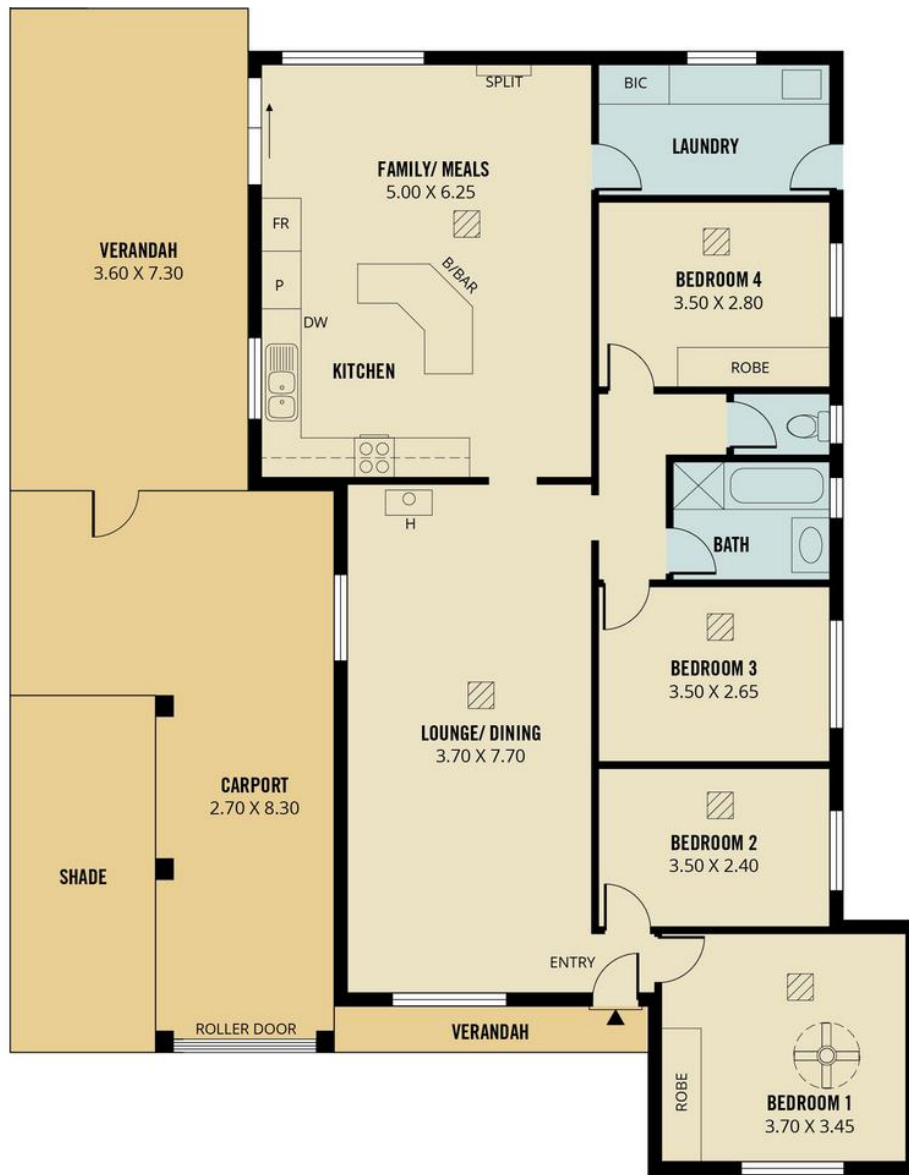
LJ Hooker Greenwith | Golden Grove | Mawson Lakes | Modbury (08) 8289 6660

North East, Shop 2, 1007 North East Road, RIDGEHAVEN SA 5097
greenwithgoldengrove.ljhooker.com.au | info@ljhsupport.com.au



Disclaimer: All information contained therein is gathered from relevant third parties sources. We cannot guarantee or give any warranty about the information provided. Interested parties must rely solely on their own enquiries.

**LJ Hooker Greenwith | Golden Grove
| Mawson Lakes | Modbury
(08) 8289 6660**



Scale in metres. This drawing is for illustration purposes only. All measurements are approximate and details intended to be relied upon should be independently verified.

Produced by **The Fotobase Group**