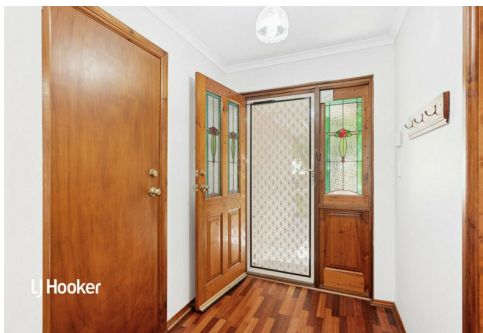
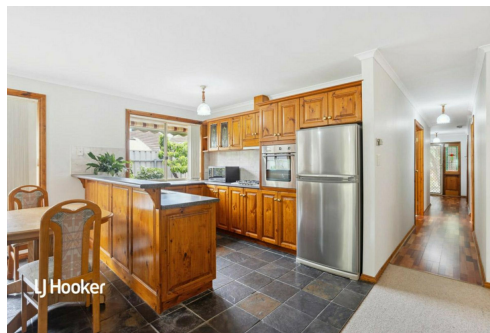




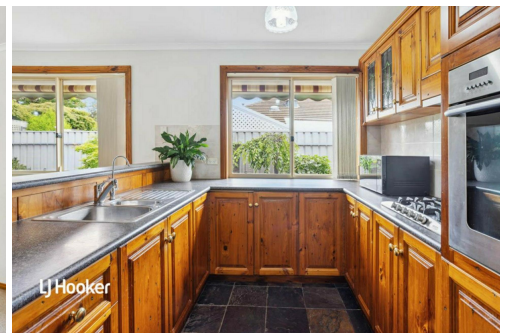
LJ Hooker



LJ Hooker



LJ Hooker



LJ Hooker

Greenwith, 15 Amadeus Court

BEAUTIFULLY MAINTAINED AND READY FOR YOU!!

Welcome to 15 Amadeus Court Greenwith! A well-loved home that offers you three-bedrooms, two-bathrooms, double garage with internal entry, lovely front and rear gardens. This home is ready for you to move straight in or update and add your own touches to make it your own.

Features include

- * Three bedrooms
- * Master with walk-in robe and ensuite
- * Bedroom two with two-way bathroom
- * Generous size third bedroom
- * Lovely timber Kitchen
- * Open plan family room
- * Meals and dining
- * Double Garage with internal entry



Disclaimer: All information contained therein is gathered from relevant third parties sources. We cannot guarantee or give any warranty about the information provided. Interested parties must rely solely on their own enquiries.



For Sale
\$679,000 - \$749,000

View
ljhooker.com.au/2B1AGJU

Contact
Craig Ricciuto
0417 806 329
craig@ljhsales.com.au

**LJ Hooker Greenwith | Golden Grove
| Mawson Lakes | Modbury
(08) 8289 6660**

- * Heating and cooling
- * 5kw solar system
- * Lovely front and rear Gardens

Situated in a very quiet court with easy access to public transport, local parks and gardens, your local shopping center's and schools.

All information provided has been obtained from sources we believe to be accurate, however, we cannot guarantee the information is accurate and we accept no liability for any errors or omissions (including but not limited to a property's land size, floor plans and size, building age and condition). Interested parties should make their own enquiries and obtain their own legal and financial advice. Should this property be scheduled for auction, the Vendor's Statement may be inspected at either of our two LJ Hooker Property Specialists Real Estate offices for 3 consecutive business days immediately preceding the auction and at the auction for 30 minutes before it starts.

RLA 208516

More About this Property

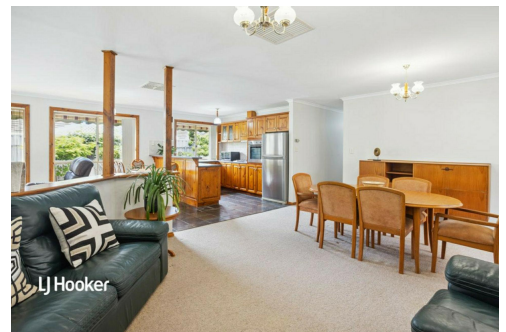
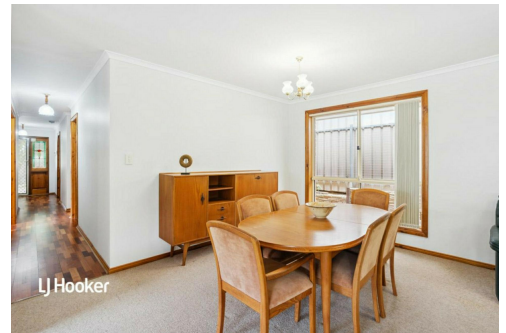
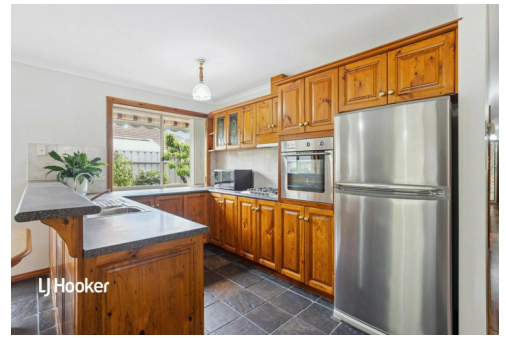
Property ID	2B1AGJU
Property Type	House
House Size	178 m ²
Land Area	404 m ²
Including	Ducted Cooling Outdoor Entertaining Built-in-Robes Secure Parking Remote Garage

Craig Ricciuto 0417 806 329

Managing Partner | Sales Specialist | craigr@ljhsales.com.au

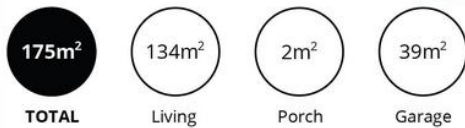
LJ Hooker Greenwith | Golden Grove | Mawson Lakes | Modbury (08) 8289 6660

North East, Shop 2, 1007 North East Road, RIDGEHAVEN SA 5097
greenwithgoldengrove.ljhooker.com.au | info@ljhsupport.com.au



Disclaimer: All information contained therein is gathered from relevant third parties sources. We cannot guarantee or give any warranty about the information provided. Interested parties must rely solely on their own enquiries.

**LJ Hooker Greenwith | Golden Grove
 | Mawson Lakes | Modbury
 (08) 8289 6660**



Scale in metres. This drawing is for illustration purposes only. All measurements are approximate and details intended to be relied upon should be independently verified.

Produced by The Fotobase Group