

## Greenwith, 12 Dalinga Court

YOUR SUBURBAN HIDEAWAY AWAITS



Welcome to 12 Dalinga Court, Greenwith! A home of enormous proportions. Boasting a land size of 3,982sqm (approx.) and over 600sqm (approx.) of internal/external living, with up to five bedrooms and a five car garage with roller door access. All this whilst also featuring a beautiful inground swimming pool with separate heated spa, a dual driveway with rear access to over 1,000sqm of flat parking spaces for your trucks, boats, vans and more!!

### Features include

- \* Five-bedrooms or four with home office
- \* Large master with walk-in robe and updated ensuite
- \* Bedroom two with teenage retreat
- \* Main bathroom with corner spa
- \* Lovely entertainers' kitchen with island bench
- \* Expansive family meals with large light filled windows

**For Sale**  
\$1,800,000

**View**  
[ljhooker.com.au/2B58GJU](http://ljhooker.com.au/2B58GJU)

**Contact**  
**Craig Ricciuto**  
0417 806 329  
[craigr@ljhsales.com.au](mailto:craigr@ljhsales.com.au)



**Disclaimer:** All information contained therein is gathered from relevant third parties sources. We cannot guarantee or give any warranty about the information provided. Interested parties must rely solely on their own enquiries.

**LJ Hooker Greenwith | Golden Grove  
| Mawson Lakes | Modbury  
(08) 8289 6660**

- \* Open plan family room with bar
- \* Laundry with 3rd toilet
- \* Reverse cycle heating and cooling
- \* Beautiful inground solar heated swimming pool with separate Spa
- \* Rare 5 roller door access garage
- \* Solar power energy saving

Nestled at the end of a peaceful court, 12 Dalinga Court offers a perfect blend of tranquility and convenience. Enjoy the serenity of minimal traffic while remaining just minutes from local shops, amenities and cozy cafes. Families will appreciate the proximity to quality public and private schools, ensuring excellent educational options for children. This spacious and well-designed home is perfect for growing families or those looking to elevate their lifestyle. With its prime location, impressive features and versatile living spaces, it's ready to welcome its new owners.

Don't miss your chance to see all this exceptional property has to offer at the upcoming open inspection!

All information provided has been obtained from sources we believe to be accurate, however, we cannot guarantee the information is accurate and we accept no liability for any errors or omissions (including but not limited to a property's land size, floor plans and size, building age and condition). Interested parties should make their own enquiries and obtain their own legal and financial advice. Should this property be scheduled for auction, the Vendor's Statement may be inspected at either of our two LJ Hooker Property Specialists Real Estate offices for 3 consecutive business days immediately preceding the auction and at the auction for 30 minutes before it starts.

RLA 208516

## More About this Property

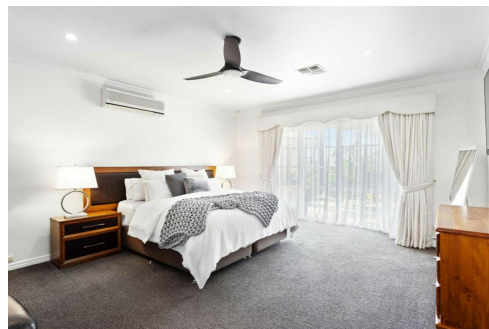
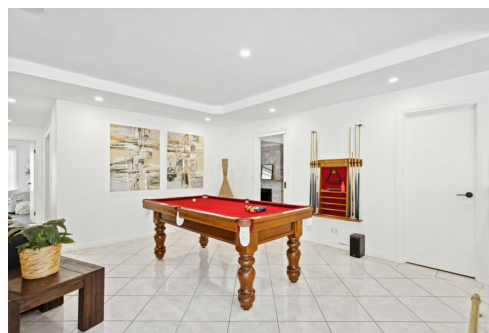
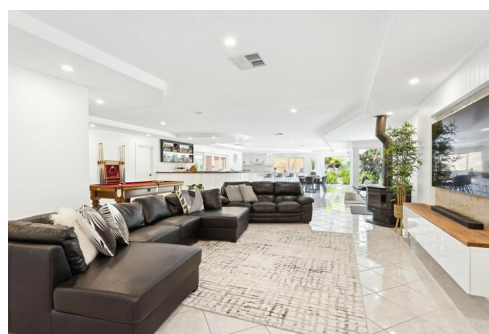
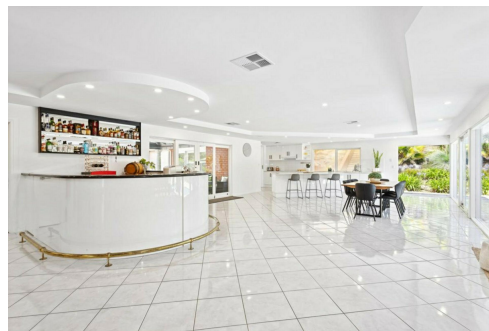
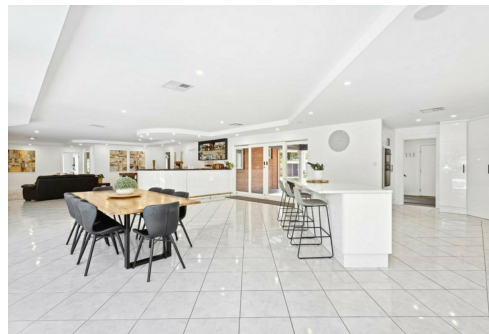
|                      |   |
|----------------------|---|
| <b>Property ID</b>   | 2B58GJU   |
| <b>Property Type</b> | House   |
| <b>House Size</b>    | 431 m2  |
| <b>Land Area</b>     | 3982 m2   |
| <b>Including</b>     | Air Conditioning<br>Ducted Cooling<br>Pool<br>Dishwasher<br>Outdoor Entertaining<br>Workshop<br>Built-in-Robes<br>Secure Parking<br>Remote Garage |

**Craig Ricciuto 0417 806 329**

Managing Partner | Sales Specialist | [craigr@ljhsales.com.au](mailto:craigr@ljhsales.com.au)

**LJ Hooker Greenwith | Golden Grove | Mawson Lakes | Modbury (08) 8289 6660**

North East, Shop 2, 1007 North East Road, RIDGEHAVEN SA 5097  
[greenwithgoldengrove.ljhooker.com.au](http://greenwithgoldengrove.ljhooker.com.au) | [info@ljhsupport.com.au](mailto:info@ljhsupport.com.au)



**Disclaimer:** All information contained therein is gathered from relevant third parties sources. We cannot guarantee or give any warranty about the information provided. Interested parties must rely solely on their own enquiries.

**LJ Hooker Greenwith | Golden Grove  
 | Mawson Lakes | Modbury  
 (08) 8289 6660**



Scale in metres. This drawing is for illustration purposes only. All measurements are approximate and details intended to be relied upon should be independently verified.

Produced by The Fotobase Group