

## Greenwith, 11 Lake Frome Place

GREAT PLACE TO START, INVEST OR DOWNSIZE AND REST!

Auction Location: Onsite

AUCTION: Onsite, Saturday the 9th of November 2024 at 10:00am

Welcome to 11 Lake Frome Place, Greenwith!

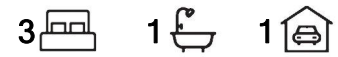
Offering you a generous size, three-bedroom villa that boasts a land size of 477sqm (approx.), dual living areas, undercover entertaining and situated in a lovely tree-lined street.

Features include

- \* 3 generous size bedrooms
- \* Open plan kitchen with breakfast bar
- \* Separate light filled lounge room



**Disclaimer:** All information contained therein is gathered from relevant third parties sources. We cannot guarantee or give any warranty about the information provided. Interested parties must rely solely on their own enquiries.



**For Sale**

Auction (\$669,000)

**View**

[ljhooker.com.au/2AY5GJU](http://ljhooker.com.au/2AY5GJU)

**Contact**

**Craig Ricciuto**

0417 806 329

[craigr@ljhsales.com.au](mailto:craigr@ljhsales.com.au)

**LJ Hooker Greenwith | Golden Grove  
| Mawson Lakes | Modbury  
(08) 8289 6660**

- \* Centrally located bathroom with separate toilet
- \* Family/Meals
- \* Undercover entertaining
- \* New rear lawn for the kids and pets to play
- \* Single carport with roller door access

Easy access to your local parks and Gardens, public transport, local schools and the ever popular Highland Village shopping centre.

All information provided has been obtained from sources we believe to be accurate, however, we cannot guarantee the information is accurate and we accept no liability for any errors or omissions (including but not limited to a property's land size, floor plans and size, building age and condition). Interested parties should make their own enquiries and obtain their own legal and financial advice. Should this property be scheduled for auction, the Vendor's Statement may be inspected at either of our two LJ Hooker Property Specialists Real Estate offices for 3 consecutive business days immediately preceding the auction and at the auction for 30 minutes before it starts.

RLA 208516

## More About this Property

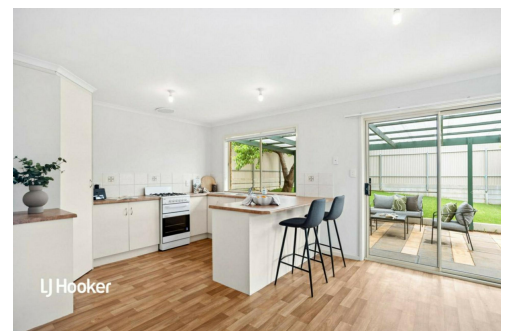
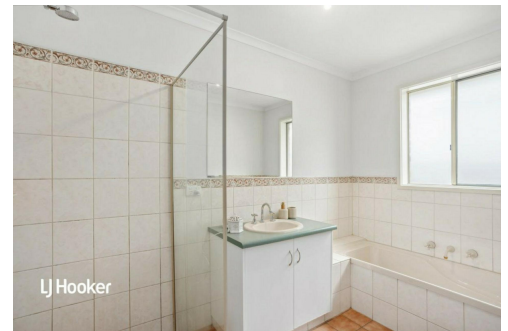
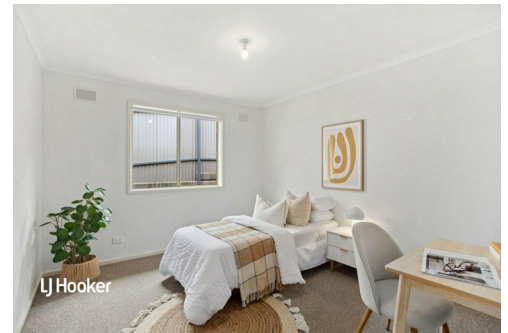
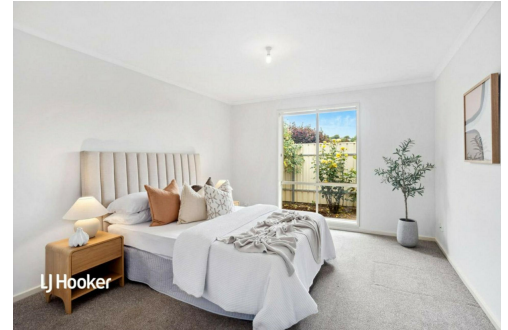
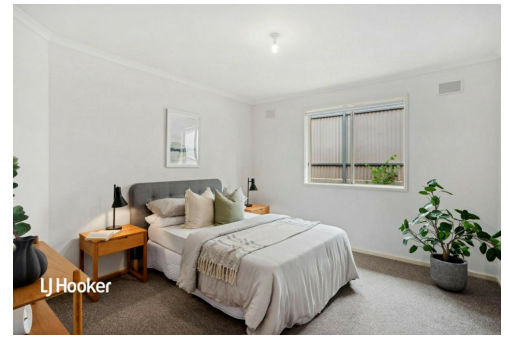
<b>Property ID</b>	2AY5GJU
<b>Property Type</b>	House
<b>House Size</b>	139 m <sup>2</sup>
<b>Land Area</b>	477 m <sup>2</sup>
<b>Including</b>	Air Conditioning Outdoor Entertaining

**Craig Ricciuto 0417 806 329**

Managing Partner | Sales Specialist | [craigr@ljhsales.com.au](mailto:craigr@ljhsales.com.au)

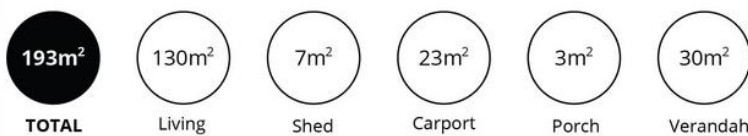
**LJ Hooker Greenwith | Golden Grove | Mawson Lakes | Modbury (08) 8289 6660**

North East, Shop 2, 1007 North East Road, RIDGEHAVEN SA 5097  
[greenwithgoldengrove.ljhooker.com.au](http://greenwithgoldengrove.ljhooker.com.au) | [info@ljhsupport.com.au](mailto:info@ljhsupport.com.au)



**Disclaimer:** All information contained therein is gathered from relevant third parties sources. We cannot guarantee or give any warranty about the information provided. Interested parties must rely solely on their own enquiries.

**LJ Hooker Greenwith | Golden Grove  
 | Mawson Lakes | Modbury  
 (08) 8289 6660**



Scale in metres. This drawing is for illustration purposes only. All measurements are approximate and details intended to be relied upon should be independently verified.

Produced by The Fotobase Group