

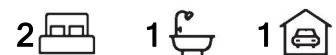
Greenwith, 11 Jena Court

HOME, SWEET HOME!

Step into this delightful villa, nestled in a quiet court where timeless design meets modern comfort. Built in 1993 and well-maintained throughout the years, this home exudes warmth and character. Offering two bedrooms and a flexible floor plan, it also provides the potential to create a third bedroom, allowing you to tailor the space to your needs. Whether you're looking to buy your first home, downsize with ease, or make a sound investment, this home is the perfect choice.

Recent updates include modern laminate flooring, plush carpets, and a fresh coat of paint throughout, ensuring a bright and welcoming atmosphere. The living areas are spacious, perfect for entertaining or relaxing in comfort. Stay cozy in winter with a gas wall heater and enjoy the cool breeze in summer with ducted evaporative air conditioning.

The outdoor area is your own private oasis, featuring an undercover space perfect for enjoying your morning coffee or gathering with family and friends. The low-maintenance



For Sale

Auction (\$570,000)

View

ljhooker.com.au/2ANBGJU

Contact

Carla Doecke

0456 830 122

carlad@ljhsales.com.au

Craig Ricciuto

0417 806 329

craigr@ljhsales.com.au



Disclaimer: All information contained therein is gathered from relevant third parties sources.

We cannot guarantee or give any warranty about the information provided. Interested parties must rely solely on their own enquiries.

LJ Hooker Greenwith | Golden Grove
| Mawson Lakes | Modbury
(08) 8289 6660

garden allows you to spend more time enjoying your home and less time on upkeep.

Features you will love:

- * Two bedrooms, master with built-in robe and bay window with roller shutters
- * Flexible floor plan with two living areas or the option to create a third bedroom
- * New carpets in both bedrooms and new laminate flooring throughout
- * Freshly painted throughout
- * Spacious kitchen with a server window, gas cooktop, oven, dishwasher, and plenty of storage
- * Ducted evaporative air-conditioning and gas wall heater providing year-round comfort
- * Undercover outdoor area with pitched veranda
- * Undercover carport
- * Artificial lawn in both front and rear yards with beautifully maintained gardens
- * Garden shed
- * Gas hot water
- * Rainwater tank

Location is key, and this home is perfectly situated within walking distance to the Highland Shopping Centre, making every day errands a breeze. Public transport is easily accessible, and you'll love being surrounded by numerous parks and reserves, offering plenty of opportunities for outdoor activities.

Don't miss out on securing this gem!

All information provided has been obtained from sources we believe to be accurate, however, we cannot guarantee the information is accurate and we accept no liability for any errors or omissions (including but not limited to a property's land size, floor plans and size, building age and condition). Interested parties should make their own enquiries and obtain their own legal and financial advice. Should this property be scheduled for auction, the Vendor's Statement may be inspected at either of our two LJ Hooker Property Specialists Real Estate offices for 3 consecutive business days immediately preceding the auction and at the auction for 30 minutes before it starts.

RLA 208516



Disclaimer: All information contained therein is gathered from relevant third parties sources. We cannot guarantee or give any warranty about the information provided. Interested parties must rely solely on their own enquiries.

**LJ Hooker Greenwith | Golden Grove
| Mawson Lakes | Modbury
(08) 8289 6660**

More About this Property

Property ID	2ANBGJU
Property Type	House
House Size	137 m ²
Land Area	310 m ²
Including	Evaporative Cooling Dishwasher Outdoor Entertaining Floorboards Built-in-Robes Fully Fenced

Carla Doecke 0456 830 122

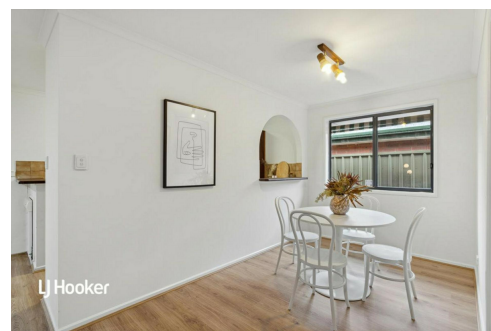
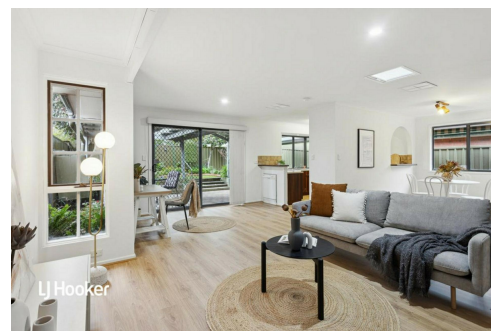
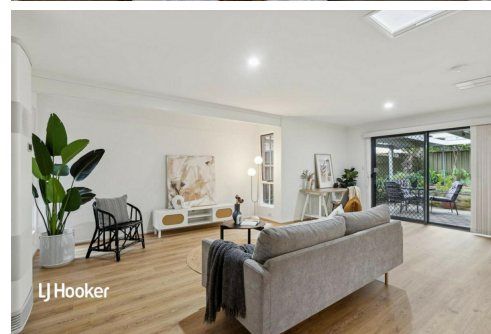
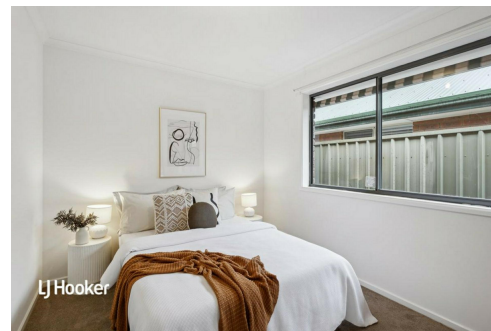
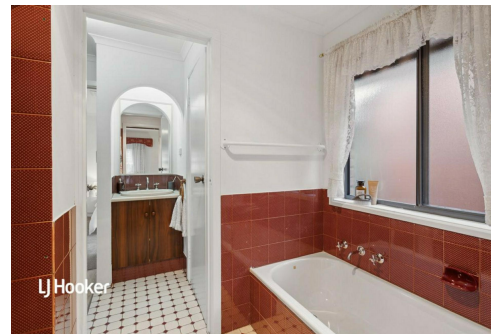
Sales Specialist | carlad@ljhsales.com.au

Craig Ricciuto 0417 806 329

Managing Partner | Sales Specialist | craigr@ljhsales.com.au

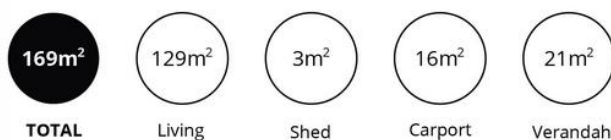
LJ Hooker Greenwith | Golden Grove | Mawson Lakes | Modbury (08) 8289 6660

North East, Shop 2, 1007 North East Road, RIDGEHAVEN SA 5097
greenwithgoldengrove.ljhooker.com.au | info@ljhsupport.com.au



Disclaimer: All information contained therein is gathered from relevant third parties sources.
 We cannot guarantee or give any warranty about the information provided. Interested parties must rely solely on their own enquiries.

**LJ Hooker Greenwith | Golden Grove
 | Mawson Lakes | Modbury
 (08) 8289 6660**



Scale in metres. This drawing is for illustration purposes only. All measurements are approximate and details intended to be relied upon should be independently verified. Produced by The Fotobase Group