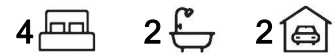


Greenwith, 11 Broughton Place

SIZABLE FAMILY HOME WITH GULLY VIEWS



Welcome to 11 Broughton Place, Greenwith! Tucked away in a quiet Court with Gully Views, this home has brand-new bathrooms, an updated kitchen, new carpets and has been freshly painted. All you need to do is move in, add your own touches and enjoy this great family home.

Features include

- * Four bedrooms
- * Master bedroom with walk-in robe and new ensuite bathroom
- * Built-in robes to bedrooms two and three
- * Updated kitchen with breakfast bar
- * Light-filled meals and family room
- * Separate lounge room with formal dining or study
- * Heating and cooling
- * Double garage with panel lift roller doors

For Sale

\$979,000 - \$1,039,000

View

ljhooker.com.au/2B7AGJU

Contact

Craig Ricciuto

0417 806 329

craigr@ljhsales.com.au



Disclaimer: All information contained therein is gathered from relevant third parties sources.

We cannot guarantee or give any warranty about the information provided. Interested parties must rely solely on their own enquiries.

**LJ Hooker Greenwith | Golden Grove
| Mawson Lakes | Modbury
(08) 8289 6660**

* Undercover Entertaining with gully views

We look forward to welcoming you this Saturday at the open inspection! Don't miss the chance to explore this stunning home in person and envision the lifestyle it offers. With its modern updates, serene location and family-friendly charm, this property is sure to capture your heart.

See you there!

All information provided has been obtained from sources we believe to be accurate, however, we cannot guarantee the information is accurate and we accept no liability for any errors or omissions (including but not limited to a property's land size, floor plans and size, building age and condition). Interested parties should make their own enquiries and obtain their own legal and financial advice. Should this property be scheduled for auction, the Vendor's Statement may be inspected at either of our two LJ Hooker Property Specialists Real Estate offices for 3 consecutive business days immediately preceding the auction and at the auction for 30 minutes before it starts.

RLA 208516

More About this Property

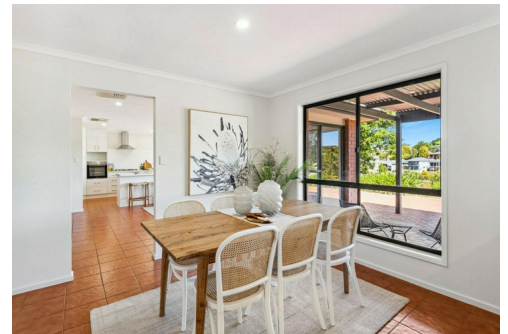
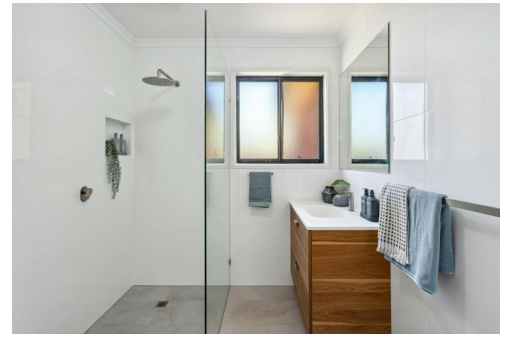
Property ID	2B7AGJU
Property Type	House
House Size	213 m2
Land Area	828 m2
Including	Ensuite Air Conditioning Ducted Cooling Ducted Heating Evaporative Cooling Toilets (2) Dishwasher Outdoor Entertaining Built-in-Robes Secure Parking Remote Garage

Craig Ricciuto 0417 806 329

Managing Partner | Sales Specialist | craigr@ljhsales.com.au

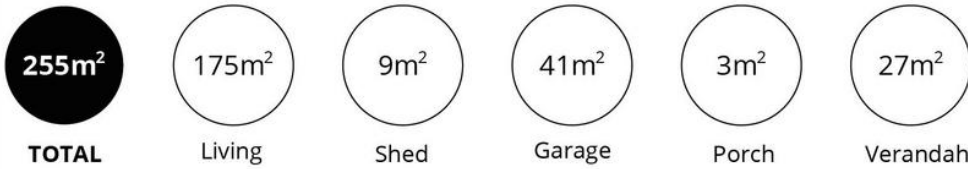
LJ Hooker Greenwith | Golden Grove | Mawson Lakes | Modbury (08) 8289 6660

North East, Shop 2, 1007 North East Road, RIDGEHAVEN SA 5097
greenwithgoldengrove.ljhooker.com.au | info@ljhsupport.com.au



Disclaimer: All information contained therein is gathered from relevant third parties sources. We cannot guarantee or give any warranty about the information provided. Interested parties must rely solely on their own enquiries.

**LJ Hooker Greenwith | Golden Grove
| Mawson Lakes | Modbury
(08) 8289 6660**



Scale in metres. This drawing is for illustration purposes only. All measurements are approximate and details intended to be relied upon should be independently verified.

Produced by **The Fotobase Group**