

## Greenwith, 10 Tongariro Street

### THE PERFECT FAMILY ENTERTAINER

4 2 4

Welcome to 10 Tongariro Street, Greenwith! An awesome family home, ready for you to enjoy some Summer fun. On offer is a flexible floorplan, great undercover entertaining area, a beautiful inground swimming pool and the ideal tradies 5.30m2 x 8.50m2 garage/workshop.

Features include

- \* Four bedrooms
- \* Master with built-in robe and ensuite
- \* Entertainers kitchen with breakfast bar
- \* Stainless steel appliances including 900mm oven
- \* Lounge with stone feature wall
- \* Light filled family meals
- \* Awesome undercover entertaining area
- \* Beautiful inground swimming pool

**For Sale**  
Under Contract

**View**  
[ljhooker.com.au/2AX2GJU](http://ljhooker.com.au/2AX2GJU)

**Contact**  
**Craig Ricciuto**  
0417 806 329  
[craigr@ljhsales.com.au](mailto:craigr@ljhsales.com.au)



**Disclaimer:** All information contained therein is gathered from relevant third parties sources. We cannot guarantee or give any warranty about the information provided. Interested parties must rely solely on their own enquiries.

**LJ Hooker Greenwith | Golden Grove**  
**| Mawson Lakes | Modbury**  
**(08) 8289 6660**

- \* Great lawn areas for the kids and the pets to play
- \* Ideal garage/workshop for the tradies
- \* Ample off street parking

Perfectly located to the local shops, schools, parks and public transport.

Enquire today!

All information provided has been obtained from sources we believe to be accurate, however, we cannot guarantee the information is accurate and we accept no liability for any errors or omissions (including but not limited to a property's land size, floor plans and size, building age and condition). Interested parties should make their own enquiries and obtain their own legal and financial advice. Should this property be scheduled for auction, the Vendor's Statement may be inspected at either of our two LJ Hooker Property Specialists Real Estate offices for 3 consecutive business days immediately preceding the auction and at the auction for 30 minutes before it starts.

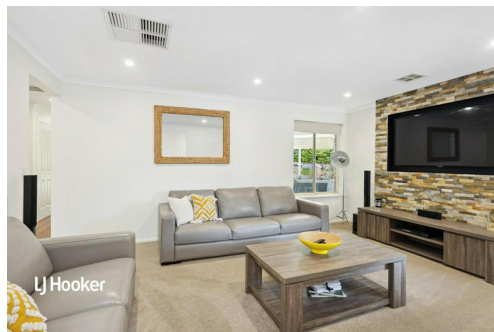
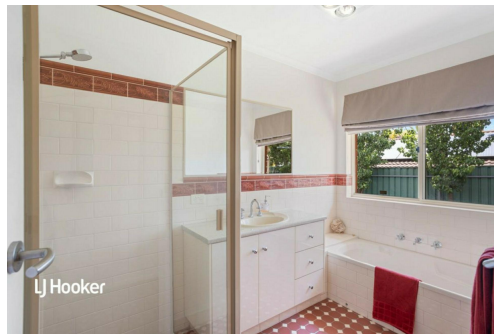
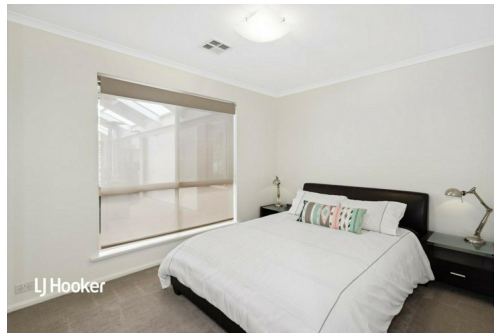
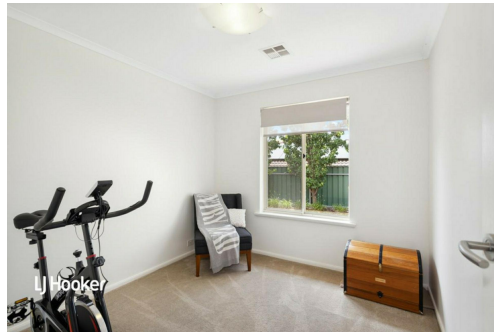
RLA 208516

## More About this Property

Property ID	2AX2GJU
Property Type	House
House Size	165 m²
Land Area	912 m²
Including	Air Conditioning Ducted Cooling Ducted Heating Evaporative Cooling Dishwasher Outdoor Entertaining Workshop Built-in-Robes Secure Parking Remote Garage Solar Panels

**Craig Ricciuto 0417 806 329**  
 Managing Partner | Sales Specialist | [craigr@ljhsales.com.au](mailto:craigr@ljhsales.com.au)

**LJ Hooker Greenwith | Golden Grove | Mawson Lakes | Modbury (08) 8289 6660**  
 North East, Shop 2, 1007 North East Road, RIDGEHAVEN SA 5097  
[greenwithgoldengrove.ljhooker.com.au](http://greenwithgoldengrove.ljhooker.com.au) | [info@ljhsupport.com.au](mailto:info@ljhsupport.com.au)



**Disclaimer:** All information contained therein is gathered from relevant third parties sources. We cannot guarantee or give any warranty about the information provided. Interested parties must rely solely on their own enquiries.

**LJ Hooker Greenwith | Golden Grove  
 | Mawson Lakes | Modbury  
 (08) 8289 6660**





313m <sup>2</sup>	146m <sup>2</sup>	12m <sup>2</sup>	44m <sup>2</sup>	81m <sup>2</sup>	30m <sup>2</sup>
<b>TOTAL</b>	Living	Shed	Garage	Verandah	Carport

Scale in metres. This drawing is for illustration purposes only. All measurements are approximate and details intended to be relied upon should be independently verified.

Produced by **The Fotobase Group**



**LJ Hooker Greenwith | Golden Grove  
| Mawson Lakes | Modbury  
(08) 8289 6660**

**Disclaimer:** All information contained therein is gathered from relevant third parties sources. We cannot guarantee or give any warranty about the information provided. Interested parties must rely solely on their own enquiries.