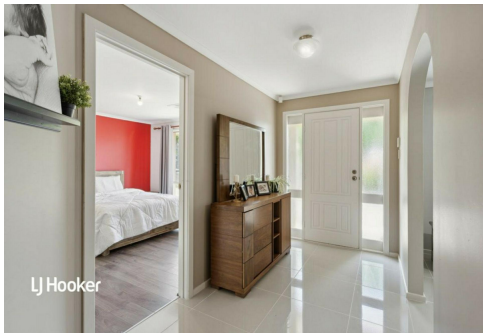


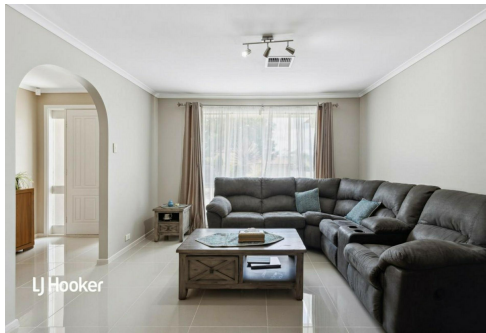


LJ Hooker

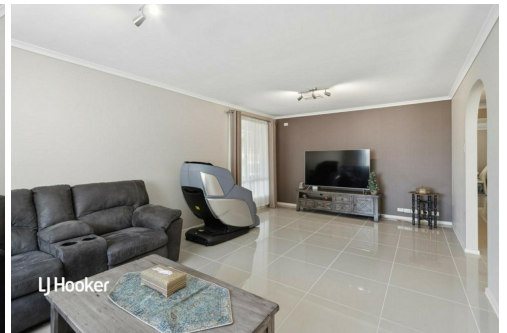
SOLD



LJ Hooker



LJ Hooker



LJ Hooker

Greenwith, 10 Lilford Court

LOVELY FAMILY HOME WITH HILL VIEWS



Welcome to 10 Lilford Court, Greenwith!

An ideal family home that offers you a flexible floorplan, large pitched undercover entertaining, lawn for the kids to play along with a double garage and low-maintenance gardens.

Features include

- * 4 Bedrooms
- * Master with ensuite and walk-in robe
- * Large lounge and dining
- * Modern entertainers kitchen with island bench
- * Open plan meals and family room
- * Separate games or rumpus room
- * Large pitched undercover entertaining

For Sale
\$995,000

View
ljhooker.com.au/2AV4GJU

Contact
Craig Ricciuto
0417 806 329
craig@ljhsales.com.au



Disclaimer: All information contained therein is gathered from relevant third parties sources. We cannot guarantee or give any warranty about the information provided. Interested parties must rely solely on their own enquiries.

**LJ Hooker Greenwith | Golden Grove
| Mawson Lakes | Modbury
(08) 8289 6660**

- * Lovely hills views
- * Lawn and garden areas for the kids to play
- * 3.2 kw solar system
- * Double garage with d/through access

Nestled in a very quiet court and with nothing left to do but move in make it your own to enjoy!

Enquire today!

All information provided has been obtained from sources we believe to be accurate, however, we cannot guarantee the information is accurate and we accept no liability for any errors or omissions (including but not limited to a property's land size, floor plans and size, building age and condition). Interested parties should make their own enquiries and obtain their own legal and financial advice. Should this property be scheduled for auction, the Vendor's Statement may be inspected at either of our two LJ Hooker Property Specialists Real Estate offices for 3 consecutive business days immediately preceding the auction and at the auction for 30 minutes before it starts.

RLA 208516

More About this Property

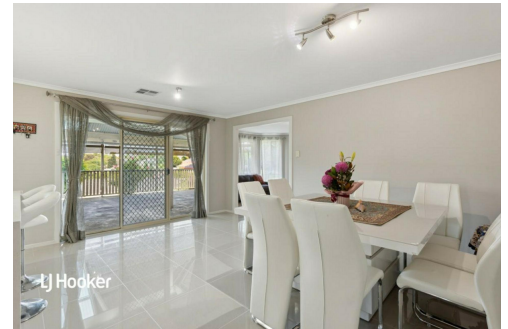
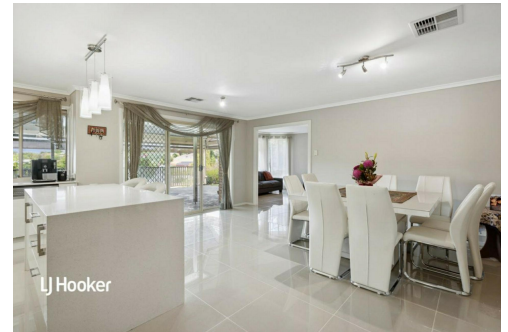
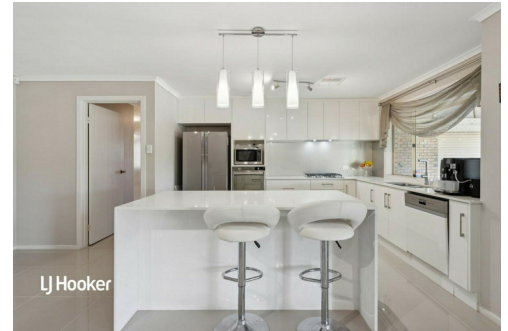
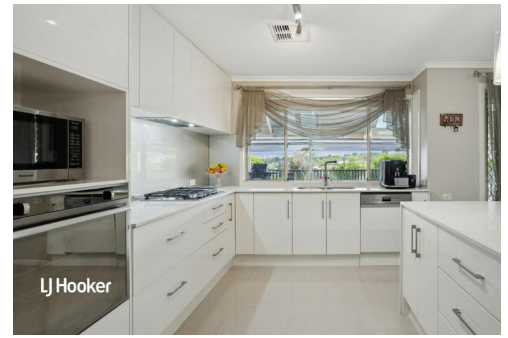
Property ID	2AV4GJU
Property Type	House
House Size	206 m ²
Land Area	750 m ²
Including	Air Conditioning Ducted Cooling Ducted Heating Alarm Dishwasher Outdoor Entertaining Built-in-Robes Secure Parking Remote Garage

Craig Ricciuto 0417 806 329

Managing Partner | Sales Specialist | craigr@ljhsales.com.au

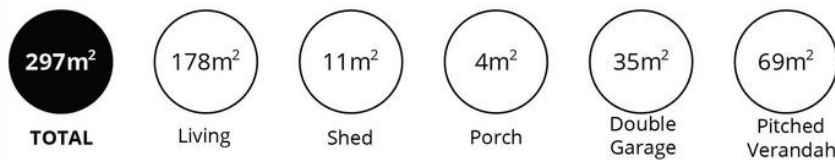
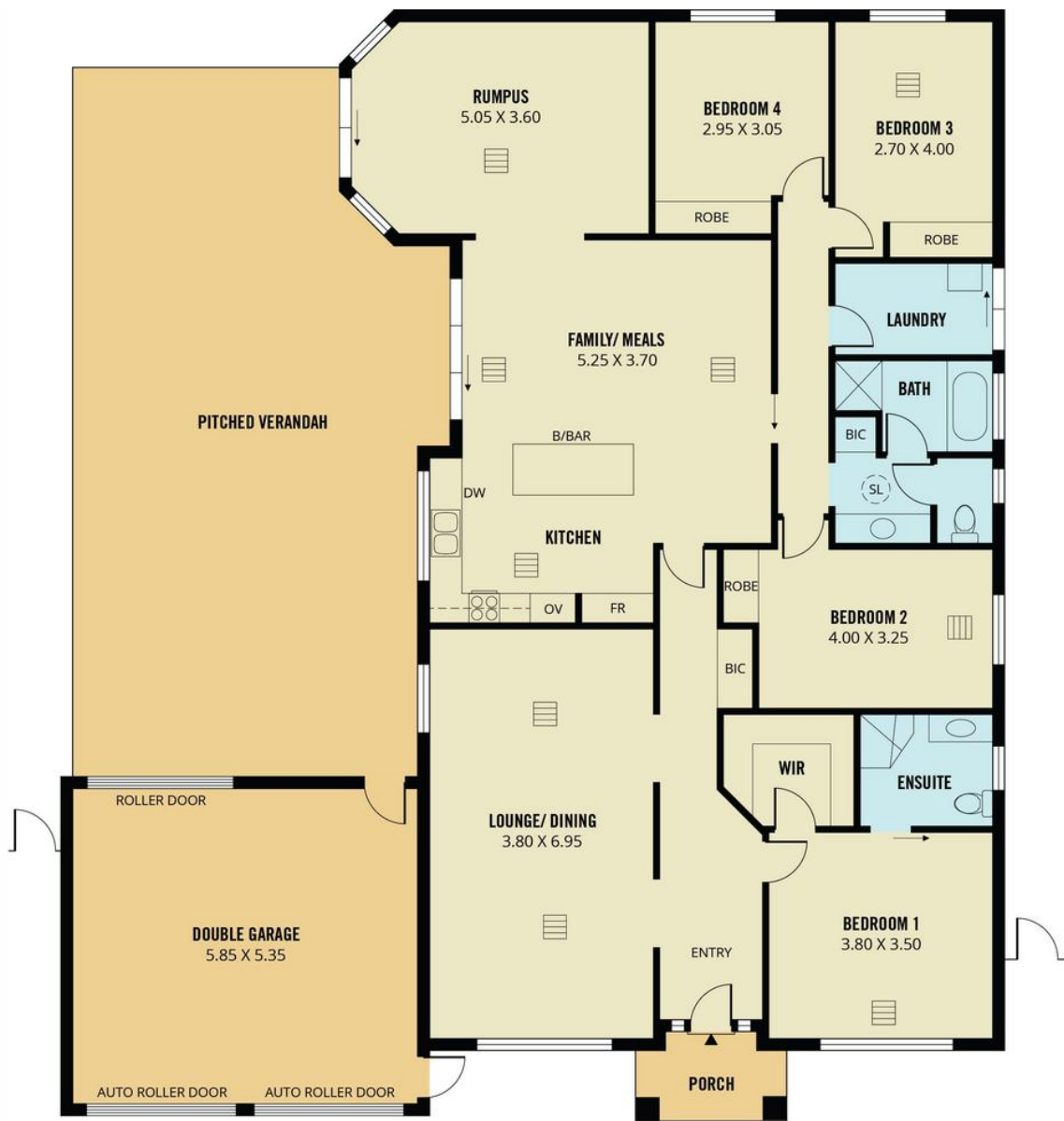
LJ Hooker Greenwith | Golden Grove | Mawson Lakes | Modbury (08) 8289 6660

North East, Shop 2, 1007 North East Road, RIDGEHAVEN SA 5097
greenwithgoldengrove.ljhooker.com.au | info@ljhsupport.com.au



Disclaimer: All information contained therein is gathered from relevant third parties sources. We cannot guarantee or give any warranty about the information provided. Interested parties must rely solely on their own enquiries.

**LJ Hooker Greenwith | Golden Grove
 | Mawson Lakes | Modbury
 (08) 8289 6660**



Scale in metres. This drawing is for illustration purposes only. All measurements are approximate and details intended to be relied upon should be independently verified.

Produced by The Fotobase Group