



Greenwith, 1 Silcock Circuit

Low Maintenance Family Living !!

What a pleasure it is to be presenting this lovely family home! The floorplan works effortlessly through the home providing great spaces for the busy household. With bedrooms offset to the southern side of the house and an abundance of 2 living areas, both indoor and outdoor spaces catering for the whole family.

Features include:

- * Four generous sized bedrooms, bedroom two and three with built-in robes
- * Master bedroom with ensuite, walk-in robe, bay windows and ceiling fan
- * Large formal living area with lovely central feature wall
- * Kitchen fitted with stainless steel appliances and breakfast bar
- * Open plan meals and large family room
- * 6.64 kw Solar power energy savings
- * Pitched pergola outdoor entertaining space
- * Low-maintenance artificial lawns at the rear



Disclaimer: All information contained therein is gathered from relevant third parties sources. We cannot guarantee or give any warranty about the information provided. Interested parties must rely solely on their own enquiries.



For Sale
\$849,000-899,000

View
ljhooker.com.au/2BC7GJU

Contact
Craig Ricciuto
0417 806 329
craigr@ljhsales.com.au

**LJ Hooker Greenwith | Golden Grove
| Mawson Lakes | Modbury
(08) 8289 6660**

- * Secure double carport
- * Ducted heating and cooling

With everything the growing family needs inside the four walls and not to mention the location with all the amenities you need nearby such as parks, local shops, public transport and schooling, why would you look anywhere else!

All information provided has been obtained from sources we believe to be accurate, however, we cannot guarantee the information is accurate and we accept no liability for any errors or omissions (including but not limited to a property's land size, floor plans and size, building age and condition). Interested parties should make their own enquiries and obtain their own legal and financial advice. Should this property be scheduled for auction, the Vendor's Statement may be inspected at either of our two LJ Hooker Property Specialists Real Estate offices for 3 consecutive business days immediately preceding the auction and at the auction for 30 minutes before it starts.

RLA 208516

More About this Property

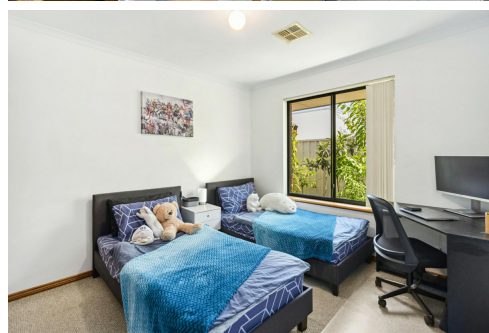
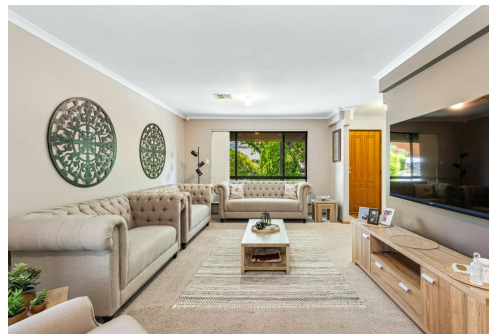
Property ID	2BC7GJU
Property Type	House
House Size	188 m2
Land Area	509 m2
Including	Air Conditioning Ducted Cooling Ducted Heating Evaporative Cooling Dishwasher Outdoor Entertaining Built-in-Robes Remote Garage Solar Panels

Craig Ricciuto 0417 806 329

Managing Partner | Sales Specialist | craigr@ljhsales.com.au

LJ Hooker Greenwith | Golden Grove | Mawson Lakes | Modbury (08) 8289 6660

North East, Shop 2, 1007 North East Road, RIDGEHAVEN SA 5097
greenwithgoldengrove.ljhooker.com.au | info@ljhsupport.com.au



Disclaimer: All information contained therein is gathered from relevant third parties sources. We cannot guarantee or give any warranty about the information provided. Interested parties must rely solely on their own enquiries.

**LJ Hooker Greenwith | Golden Grove
 | Mawson Lakes | Modbury
 (08) 8289 6660**



SILCOCK CIRCUIT

SITE PLAN
(NOT TO SCALE)

Scale in metres. This drawing is for illustration purposes only. All measurements are approximate and details intended to be relied upon should be independently verified.

Produced by **The Fotobase Group**