



Greenwell Point, 71 Adelaide Street

Waterfront Reserve Home!

71 Adelaide street is a neat and tidy home in original condition, it has 2/3 bedrooms. A great living area with large window that look straight over the water. The kitchen has gas cooking and good cupboard space.

The bathroom has been updated over the years and is in good condition with a shower over the bath.

There is a second living area or 3rd bedroom down a few stairs that makes a great space for guests.

The laundry is external with a second toilet. There is an under cover area from the door to the laundry.

The single garage is a good workshop or for off-street parking. The gardens are neat and tidy.

You can easily add value to this home with some renovations.

Most importantly its all about the location and amazing views!

Beautiful Greenwell Point is quiet and the perfect spot to have a holiday home or retire to.

3 

1 

1 

For Sale

\$1,250,000 - \$1,350,000

View

By Appointment

Contact

Linda Edwards

0403 437 266

linda.edwards@ljhooker.com.au

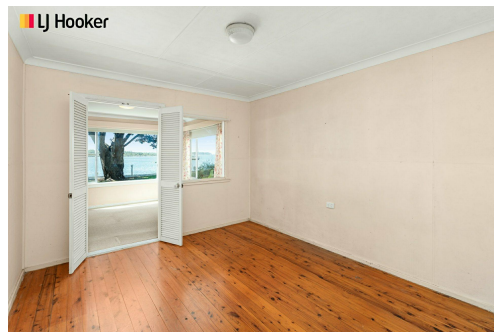
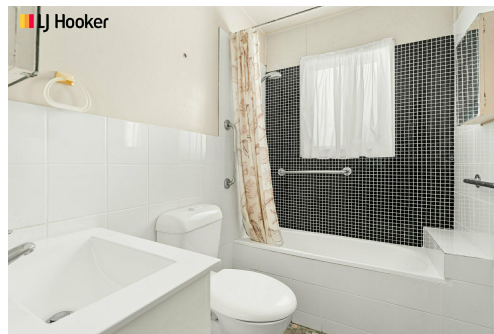
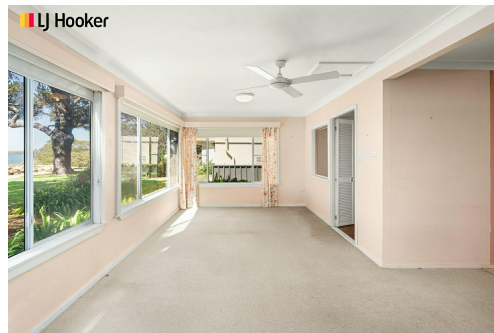
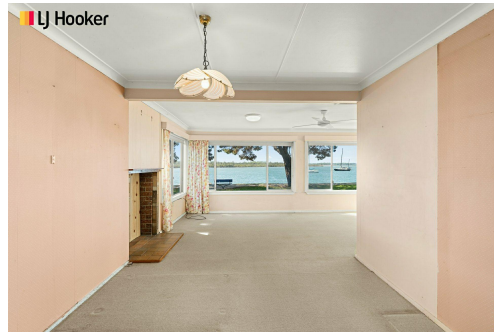
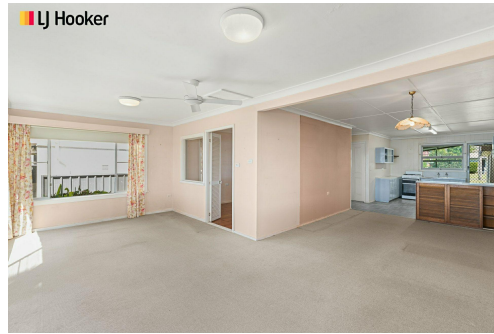
Only a few steps to the waters edge for all the water activities you desire.
Approximately 10min to Nowra and 2 Hours to Sydney.
For an inspection phone Linda Edwards 0403437266

More About this Property

Property ID	675HSD
Property Type	House
Land Area	561 m2
Including	Toilets (2)

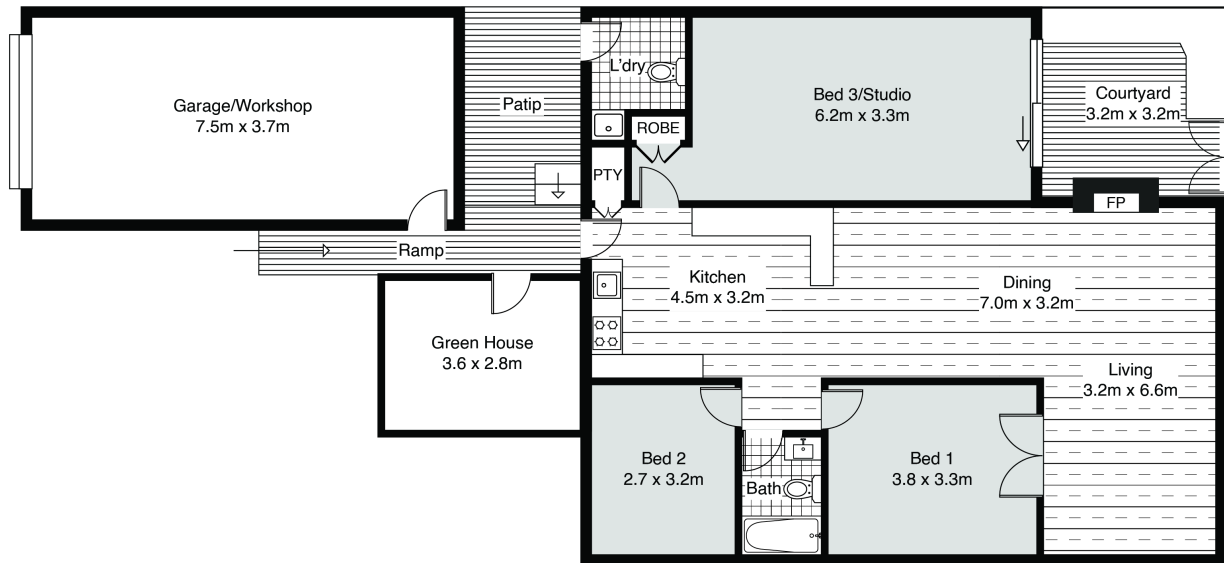
Linda Edwards 0403 437 266
Licenced Real Estate Agent / JP / Member of the LJ Hooker Captains Club |
linda.edwards@ljhooker.com.au

LJ Hooker Nowra (02) 4421 2957
5/38-44 Berry Street, NOWRA NSW 2541
nowra.ljhooker.com.au | nowra@ljhooker.com.au



Disclaimer: All information contained therein is gathered from relevant third parties sources.
We cannot guarantee or give any warranty about the information provided. Interested parties must rely solely on their own enquiries.

LJ Hooker Nowra
(02) 4421 2957



All attempts have been made to ensure the accuracy of this floor plan.
 All measurements of doors, windows, opening direction, room measurements are approximate
 and no responsibility is taken for any error, omission or misstatement this plan is for display purposes only and not to scale.
 The total floor area is not a guarantee. Should be used as an approximation and not be used on the basis of valuation.

71 Adelaide Street, Greenwell Point