



63 and 65 Greenwell Point Road, Greenwell Point

Prime development site! 63 and 65 Greenwell Point Rd.

Rarely do you find properties like this come to market, two properties side by side with elevated water views and older cottages that could be renovated or removed.

63 Greenwell point Road is a 2 bedroom, 1 bathroom, kitchen and living area with fireplace.

This has a large carport for car and boat parking.


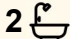
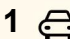
65 is 1 bedroom self contained cottage, with a separate garage. This is built back on the block and has room for a second dwelling (STCA) The location is outstanding, walking distance to the shops, Greenwell Point Hotel and Pelican Rocks Cafe.

10min to Nowra 2.5 hours to Sydney.

Preference of both sales together but would consider separate sales.

• 658m² 65-660m². Zoning R2 Low Density Residential.

For an inspection phone Linda Edwards 0403 437266.

3  2  1 

FOR SALE

\$1,450,000 - \$1,550,000

VIEW

By Appointment

AGENTS

Linda Edwards

0403 437 266

linda.edwards@ljhooker.com.au

AGENCY

LJ Hooker Nowra

(02) 4421 2957

All information contained therein is gathered from relevant third parties sources.
We cannot guarantee or give any warranty about the information provided.
Interested parties must rely solely on their own enquiries.

 **LJ Hooker**

MORE DETAILS

Property ID 6CXHSD
Property Type House
Land Area 1318 m2
Including Toilets (2)

Linda Edwards 0403 437 266

Licensed Real Estate Agent / JP / Member of the LJ Hooker Captains Club | linda.edwards@ljhooker.com.au

LJ Hooker Nowra (02) 4421 2957

5/38-44 Berry Street, NOWRA NSW 2541
nowra.ljhooker.com.au | nowra@ljhooker.com.au

LJ Hooker



LJ Hooker



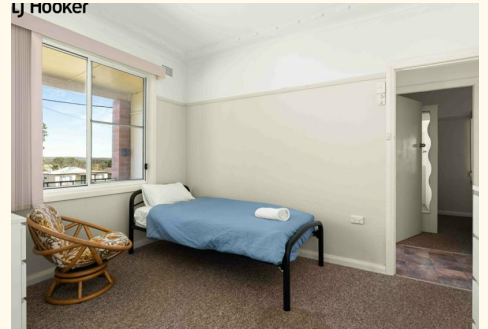
LJ Hooker



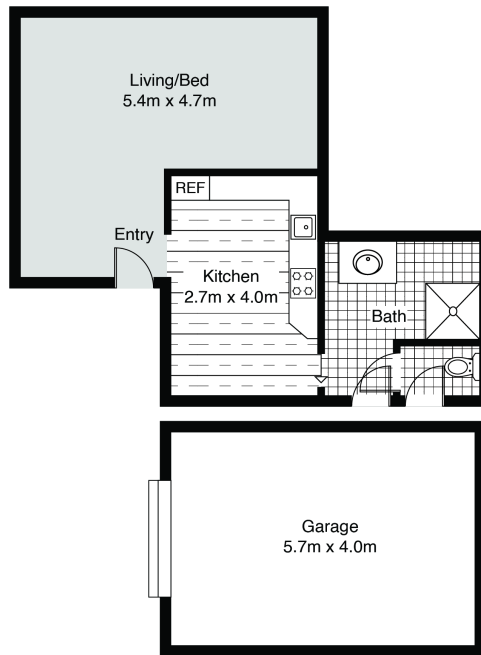
LJ Hooker



LJ Hooker



All information contained therein is gathered from relevant third parties sources.
We cannot guarantee or give any warranty about the information provided.
Interested parties must rely solely on their own enquiries.



All attempts have been made to ensure the accuracy of this floor plan.
All measurements of doors, windows, opening direction, room measurements are approximate
and no responsibility is taken for any error, omission or misstatement this plan is for display purposes only and not to scale.
The total floor area is not a guarantee. Should be used as an approximation and not be used on the basis of valuation.

65 Greenwell Point Road, Greenwell Point