



Greenwell Point, 43 Adelaide Street

Waterfront living with exceptional views!

43 Adelaide Street on offer for the first time in 40 years, the home has been loved by the family but now it is time for a new family. It is a well built home that is in original condition with large living areas, the front room is the Snooker room with a professional size table that comes with the home. This room has a bar area with plumbing. The 3 bedrooms are good sizes, with the 2 bathrooms in original condition.

The dining and lounge areas have fantastic water views, this leads out to the back deck and is the spot for the morning cuppa! The yard is low maintenance and well fenced, and for those cooler days there is an enclosed sunroom in the centre of the home.

The over-sized garage is perfect storage for a boat and cars. Resting on a level 885m² block walking distance to Pelican Rocks Cafe, Greenwell Point Hotel, Primary School and the IGA.

Greenwell Point is home to Australia's Best Fish and Chips, great fishing and water sports and only 10min to Nowra.

For an inspection phone Linda Edwards 0403 437 266.



For Sale
\$1,695,000

View
ljhooker.com.au/5ZDHSD

Contact
Linda Edwards
0403 437 266
linda.edwards@ljhooker.com.au

More About this Property

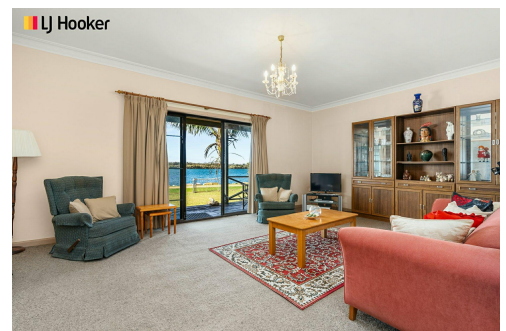
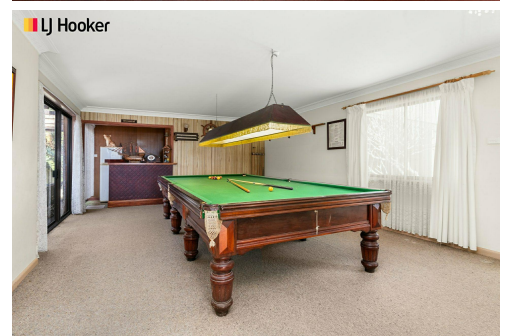
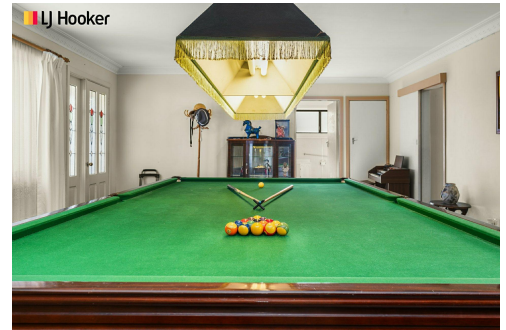
Property ID	5ZDHSD
Property Type	House
Land Area	885 m ²
Including	Toilets (2) Courtyard Deck

Linda Edwards 0403 437 266

Licenced Real Estate Agent / JP / Member of the LJ Hooker Captains Club |
linda.edwards@ljhooker.com.au

LJ Hooker Nowra (02) 4421 2957

5/38-44 Berry Street, NOWRA NSW 2541
nowra.ljhooker.com.au | nowra@ljhooker.com.au



Disclaimer: All information contained therein is gathered from relevant third parties sources.
We cannot guarantee or give any warranty about the information provided. Interested parties must rely solely on their own enquiries.

LJ Hooker Nowra
(02) 4421 2957



All attempts have been made to ensure the accuracy of this floor plan.
All measurements of doors, windows, opening direction, room measurements are approximate
and no responsibility is taken for any error, omission or misstatement this plan is for display purposes only and not to scale.
The total floor area is not a guarantee. Should be used as an approximation and not be used on the basis of valuation.

43 Adelaide Street, Greenwell Point