



Greenway, 27/1 Rowland Rees Crescent

Lifestyle & Luxury Living

Fronting reserve land with uninterrupted views of the majestic Urambi hills from your balcony, 27/1 Rowland Rees Crescent is the home you have been looking for in central Tuggeranong.

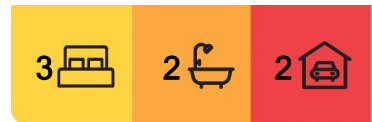
This beautiful approximately 155sqm townhouse presents in as-new condition, with three large bedrooms, a main bathroom, and a large ensuite off the master bedroom.

The ground floor includes an oversized and light-filled main living space - the heart of this home. High quality European appliances feature in the kitchen, which has stone bench tops and an abundance of storage. A convenient powder room is also located on this level.

A multi-purpose space on the second level can be used as another living space, parents' retreat, kid's playroom or study. A sliding door opens onto a balcony where you can soak in the stunning, uninterrupted views of nearby reserve land.



Disclaimer: All information contained therein is gathered from relevant third parties sources. We cannot guarantee or give any warranty about the information provided. Interested parties must rely solely on their own enquiries.



For Sale
\$880,000

View
Sat 26th Oct @ 11:00AM - 11:30AM

Contact
Jack Flynn
0424 674 416
jack.flynn@ljhwodenweston.com.au
Charles Martin
0414 544 796
charles.martin@ljhwodenweston.com.au

EER ★★★★★

LJ Hooker Woden | Weston
(02) 6288 8888

This home boasts two courtyards with custom-made timber decks. The easy care, mature garden in the front courtyard is a peaceful sanctuary in which to enjoy a Sunday morning coffee, or a glass of wine with the sunset, while the sheltered central courtyard allows light to flood into the main living space and master bedroom.

The internal access double garage, with a secure automatic roller door provides ample space for vehicles and storage.

Greenway Terrace is a secure, gated community, with resort-style common area facilities for the exclusive use of residents and their guests. The large outdoor saltwater pool, BBQ area and amenities room are great for entertaining. Close by is an outdoor gymnasium and playground - handy if you or the kids are looking to burn off some excess energy.

The shared community garden compliments the extensive landscape gardens throughout the complex. This home is well situated for access to a range of services and amenities. You will find yourself within walking distance of several government departments, as well as the Southpoint and Homeworld shopping precincts.

Features

- Three spacious bedrooms all with built in robes
- Master bedroom with large ensuite
- Two courtyards with custom timber decks
- Kitchen features stone bench tops and quality stainless appliances
- Remote double garage with internal access
- Second living area upstairs with sheltered balcony
- Amenity rich complex with pool, BBQ area, playground, outdoor gym and community garden

Rates: \$366.00 p.q. approx.

Land Tax: \$434.00 p.q approx.

Body Corporate: \$809.50 p.q. approx.

Join us at an open home or get in touch to arrange a private viewing to experience all that this turnkey, low-maintenance home has to offer.

More About this Property

Property ID	HHEH5W
Property Type	Townhouse
House Size	155 m ²
EER	6
Including	Ducted Cooling Ducted Heating Toilets (1) Courtyard Balcony Dishwasher Outdoor Entertaining Built-in-Robes Secure Parking Remote Garage

Jack Flynn 0424 674 416

Sales Agent | jack.flynn@ljhwodenweston.com.au

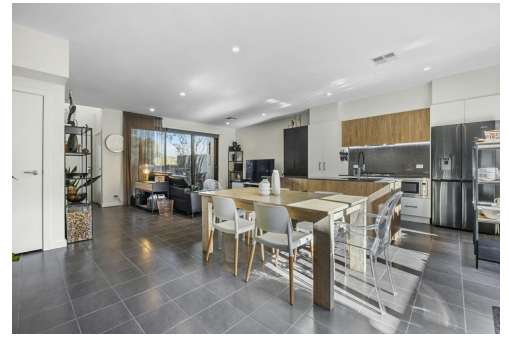
Charles Martin 0414 544 796

Sales Associate | charles.martin@ljhwodenweston.com.au

LJ Hooker Woden | Weston (02) 6288 8888

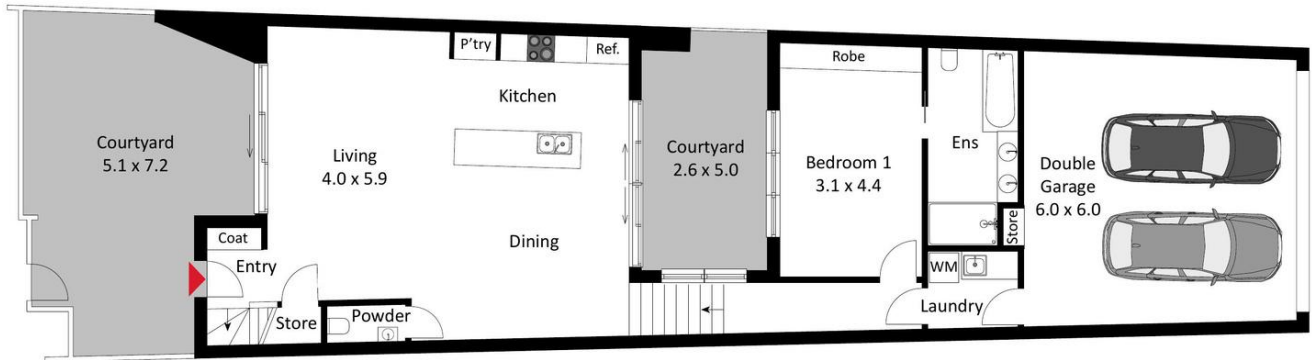
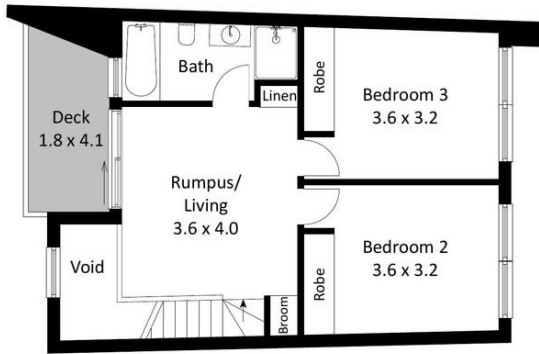
23 Briery Street, WESTON CREEK ACT 2611

westoncreek.ljhooker.com.au | reception@ljhwodenweston.com.au



**LJ Hooker Woden | Weston
(02) 6288 8888**

Disclaimer: All information contained therein is gathered from relevant third parties sources. We cannot guarantee or give any warranty about the information provided. Interested parties must rely solely on their own enquiries.



The site plan and floor plan are not to scale; measurements are indicative and in metres. Bushes and trees are placed for illustration purposes. Plans should not be relied on. Interested parties should make and rely on their own enquiries.



LJ Hooker Woden | Weston
(02) 6288 8888

Disclaimer: All information contained therein is gathered from relevant third parties sources. We cannot guarantee or give any warranty about the information provided. Interested parties must rely solely on their own enquiries.