



Greenvale, 14 Beryl Crescent

Elegant Family Living on a Single Level

Located in the sought-after Greenvale area, this charming home offers an exceptional family lifestyle with its flexible floorplan, impressive features, and spacious grounds (approx. 532 sqm). Currently vacant, it is ideal for both investors and owner-occupiers looking to move in immediately.

Upon entering, you'll be welcomed by a well-designed layout that includes a generous master bedroom with a walk-in robe and ensuite, three additional bedrooms with built-in robes, and a modern main bathroom.

Perfect for family living, the home boasts a versatile lounge, and a large open-plan living and dining area that connects seamlessly to a stone-bench kitchen with contemporary appliances.

Additional features include ducted heating, evaporative cooling, a large laundry, and ample



Disclaimer: All information contained therein is gathered from relevant third parties sources. We cannot guarantee or give any warranty about the information provided. Interested parties must rely solely on their own enquiries.



For Sale
\$750,000 - \$820,000

View
[ljhooker.com.au/K7CHC2](https://l.jhooker.com.au/K7CHC2)

Contact
Yannie Hou
0416 868 512
yhou.rowville@ljhooker.com.au

LJ Hooker City Residential
(03) 9600 2166

storage options.

The outdoor area is equally impressive, featuring an alfresco entertaining space and a vast backyard ideal for children. A remote-control double garage adds convenience.

Ideally situated, this home is minutes from Greenvale Reservoir, Woodlands Historic Park, and Greenvale Shopping Centre, with Roxburgh Park Shopping Centre just 12 minutes away, and Highpoint Shopping Centre 25 minutes away. The property is within the catchment for Greenvale Primary School and Greenvale Secondary College.

With easy access to Melbourne CBD (30-minute drive) and Tullamarine Airport (11-minute drive), this property offers both comfort and convenience. Don't miss the chance to make this your dream home in a sought-after location!

More About this Property

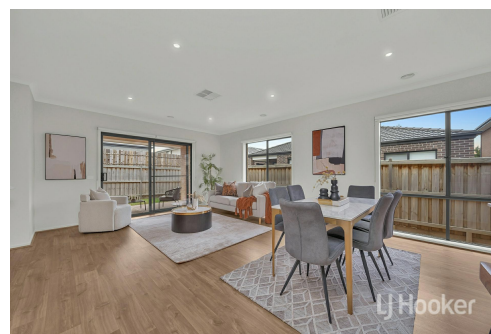
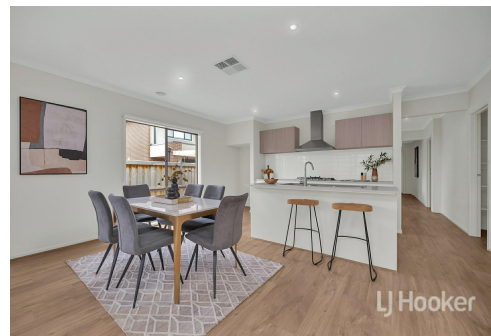
Property ID	K7CHC2
Property Type	House
Land Area	532 m ²

Yannie Hou 0416 868 512

Senior Property Consultant | yhou.rowville@ljhooker.com.au

LJ Hooker City Residential (03) 9600 2166

Upper Ground Floor, 439-445 Lonsdale St, MELBOURNE VIC 3000
cityresmelbourne.ljhooker.com.au | cityresmelbourne@ljhooker.com.au

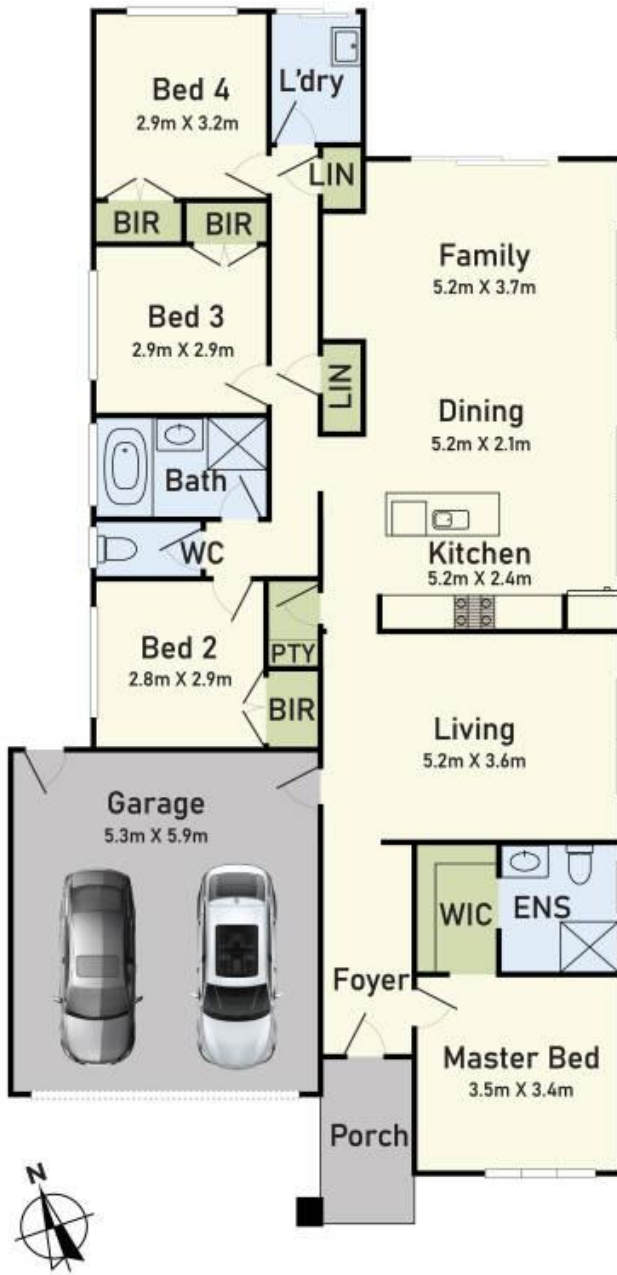


Disclaimer: All information contained therein is gathered from relevant third parties sources.

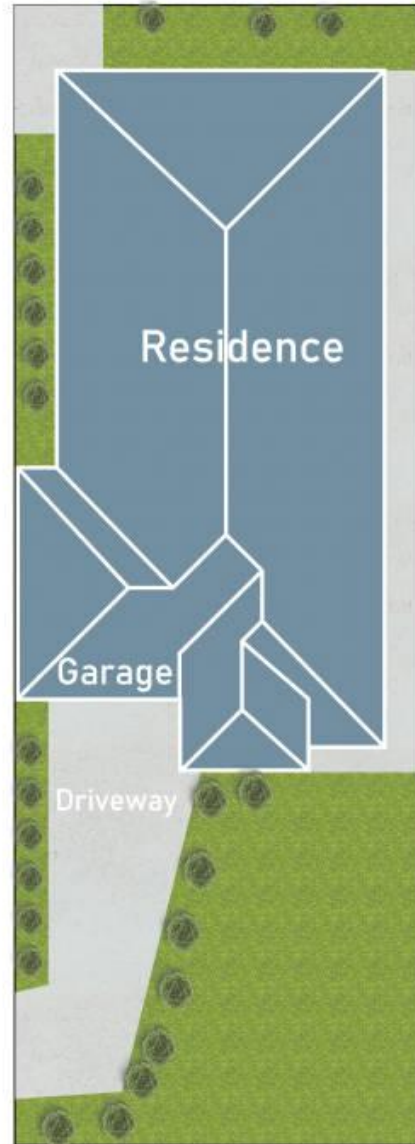
We cannot guarantee or give any warranty about the information provided. Interested parties must rely solely on their own enquiries.

LJ Hooker City Residential
(03) 9600 2166

Floor Plan



Site Plan



14 Beryl Crescent, Greenvale VIC 3059

* Dimensions are approximate and for illustrative purposes only