



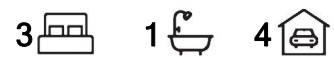
Greenfields, 4 Banjup Road

The Property has just GONE #UNDER OFFER# more required urgently

This beautifully maintained family home is situated in the sought-after Riverside Garden Estate in Greenfields and offers a 3-bedroom and 1-bathroom house located close to the river on a large R20 subdividable block.

This beautifully presented 123sqm family home with gorgeous outdoor entertainment options won't last long.

Estimated Rent \$540 - \$560 per/Wk potential to lease or live in the house and sub-divide the rear of the block, then hold for future growth or develop the rear block into another property with side laneway access to the rear block. (Subject to planning and shire approval). OR design and build two new homes or one if you so wish. Endless possibilities with this property.



For Sale
Offers Over \$460,000

View
ljhooker.com.au/4PPEFF2

Contact
Richard Mathlin
0409 125 205
richard.mathlin@ljhooker.com.au



Disclaimer: All information contained therein is gathered from relevant third parties sources. We cannot guarantee or give any warranty about the information provided. Interested parties must rely solely on their own enquiries.

LJ Hooker Mandurah
(08) 9586 5555

- Detached Fibro single story house
- 3 Bedrooms
- 1 Bathroom
- Open plan kitchen, dining, and lounge area.
- Wooden floorboards.
- 600mm Oven with 4 Burner Cooktop
- Evaporative ducted Air Con.
- Laundry.
- outside entertaining area.
- Secure back garden suitable for kids and pets.
- Double carport
- Bore.
- One double garage/workshop and a further single garage
- Sola hot water
- Three phase Sola Panel system

Other features:

- Block size 920sqm (Level).
- Built-in 1979
- Close to Schools, Parks, and the River.
- Easy access to Mandurah and the Freeway.

Close by Amenities:

- Lakes Road food and ancillary services estate
- Riverside Primary School
- Peel Heath Campus

Disclaimer: Some pictures are for illustrative purposes only. This description has been prepared for advertising and marketing purposes only. It is believed to be reliable and accurate; however, buyers must make their independent inquiries and must rely on their judgment about the information included in this advertisement. Richard Mathlin and LJ Hooker Mandurah provide this information without any express or implied warranty as to its accuracy or currency.

More About this Property

Property ID	4PPEFF2
Property Type	House
House Size	123 m ²
Land Area	920 m ²

Richard Mathlin 0409 125 205

Licensee/General Manager | richard.mathlin@ljhooker.com.au

LJ Hooker Mandurah (08) 9586 5555

68 Mandurah Terrace, MANDURAH WA 6210

mandurah.ljhooker.com.au | reception2.mandurah@ljhooker.com.au



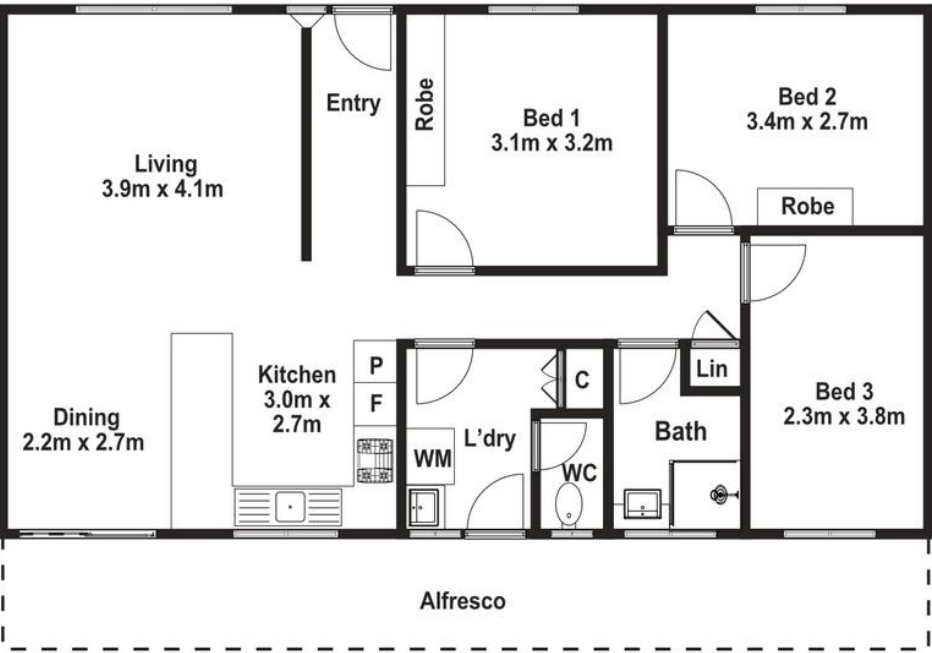
Disclaimer: All information contained therein is gathered from relevant third parties sources. We cannot guarantee or give any warranty about the information provided. Interested parties must rely solely on their own enquiries.

LJ Hooker Mandurah
(08) 9586 5555

4 Banjup Road, Greenfields

block size 920 m² | building 123m² | external 797m²

3 x 1 x 2 x

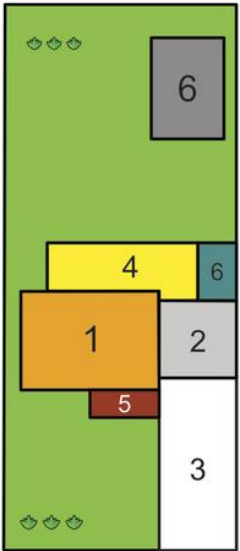


© gbpht.au/re

*scale in metres. Dimensions are approximate. All information contained herein from sources we believe to be reliable, however we cannot guarantee its accuracy and interested persons should rely on their own enquiries.



Richard Mathlin | 0409 125 205



Legend

- 1. Residence
- 2. Carport
- 3. Driveway
- 4. Patio
- 5. Portico
- 6. Shed



LJ Hooker Mandurah
(08) 9586 5555

Disclaimer: All information contained therein is gathered from relevant third parties sources. We cannot guarantee or give any warranty about the information provided. Interested parties must rely solely on their own enquiries.