



10 Elleker Close, Greenfields

Welcome to your dream home - Space, Comfort & Lifestyle!

Gopika Kaku is proud to present this spacious (approx. 240m²) family home, offering exceptional value, generous living areas, and a lifestyle of comfort and convenience - all set on an expansive block with endless possibilities. A rare opportunity in a highly sought-after location - do not miss your chance to make it yours!

Key Features

- 5 Bedrooms OR 4 Bedrooms + Study Flexibility to suit your family's needs, whether you prefer a dedicated home office, extra bedroom, or both.
- Multiple Living Areas + Formal Dining Room Designed for relaxed family living and effortless entertaining, with a second dining area conveniently positioned opposite the kitchen.
- Large Covered Patio The perfect space for entertaining friends and family all year round.
- Modern Renovated Family Bathroom Tastefully updated with both a bath and shower for everyday comfort.
- Separate Laundry Room Spacious, functional and well-appointed for busy households.
- Solar Panels Helping to reduce energy costs while supporting

5 2 2

FOR SALE
Offers Over \$1,399,000

AGENTS

Gopika Kaku
0493 530 809
gkaku.mandurah@ljhooker.com.au

Jessica Kaku
0422 114 037
jessica.kaku@ljhpxp.com.au

AGENCY

LJ Hooker Mandurah
(08) 9586 5555

All information contained therein is gathered from relevant third parties sources.
We cannot guarantee or give any warranty about the information provided.
Interested parties must rely solely on their own enquiries.



sustainability.

- Double Lock-Up Garage With internal access directly into the kitchen for ease and convenience.
- Huge 10m x 12m Powered Shed Ideal for tradespeople, hobbyists or those needing extra storage or workshop space.
- Large, Level Backyard A fantastic space for kids and pets to play, explore and enjoy the outdoors.
- Secure Parking Plenty of room for boats, caravans, trailers and extra vehicles.

Prime location:

- Close to the Railway Station - Ideal for commuters
- Near Major Shopping Centre - Minutes to retail, dining and everyday essentials
- Quick Highway Access - Smooth travel to the city or the coast
- Bunnings, Foreshore & Beaches Nearby - Offering both convenience and coastal lifestyle

Lovingly maintained for nearly 3 decades this home radiates warmth, charm, and generous living spaces - the perfect blend of lifestyle, comfort, and long-term value. Do not miss your chance to enjoy space, style, and convenience in this well-connected location. Call Gopika on 0493 530 809 or Jessica on 0422 114 037 to arrange viewing or to make an offer!

Disclaimer: Some pictures are for illustrative purposes only. This description has been prepared for advertising and marketing purposes only. It is believed to be reliable and accurate; however buyers must make their own independent inquiries and must rely on their own personal judgment about the information included in this advertisement. Gopika Kaku / Jessica Kaku and LJ Hooker Mandurah provides this information without any express or implied warranty as to its accuracy or currency.

MORE DETAILS

Property ID	4SF4FF2
Property Type	House
House Size	240 m2
Land Area	2351 m2

Gopika Kaku 0493 530 809

Sales Executive | gkaku.mandurah@ljhooker.com.au

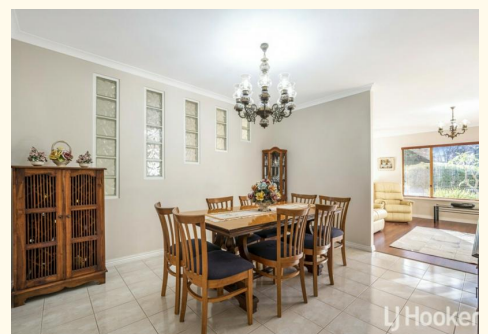
Jessica Kaku 0422 114 037

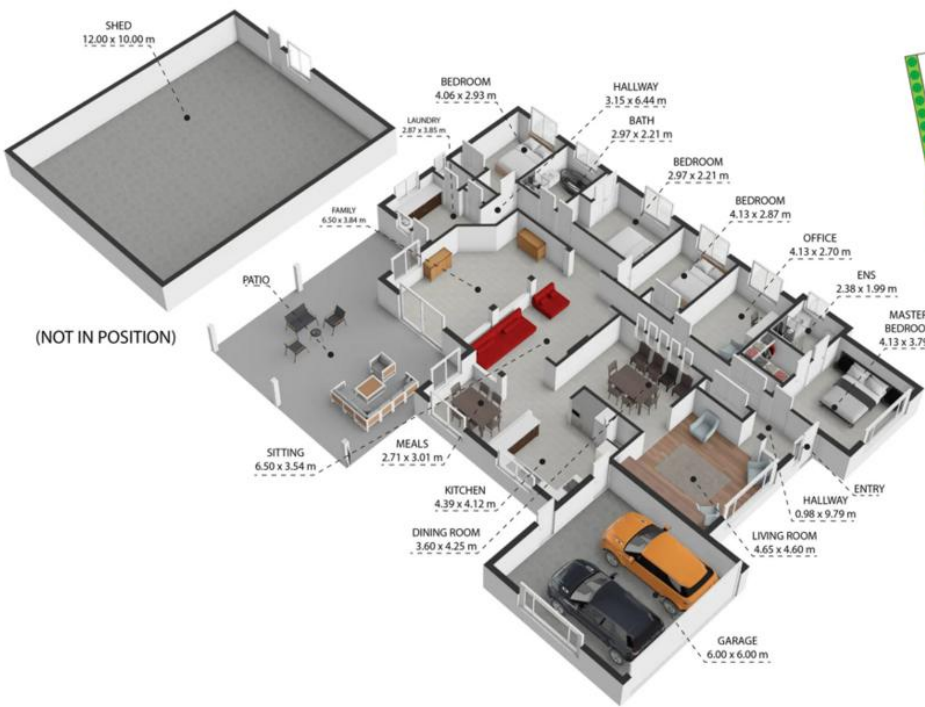
Sales Executive | jessica.kaku@ljhpxp.com.au

LJ Hooker Mandurah (08) 9586 5555

68 Mandurah Terrace, MANDURAH WA 6210

mandurah.ljhooker.com.au | hello.south@ljhpxp.com.au





10 Elleker Close, Greenfields, WA, 6210

Whilst every attempt has been made to ensure the accuracy of the floor plan contained here, measurements of doors, windows, rooms and any other items are approximate and no responsibility is taken for any error, omission, or misstatement. This plan is for illustrative purposes only and should be used as such by any prospective purchaser.

All information contained therein is gathered from relevant third parties sources. We cannot guarantee or give any warranty about the information provided. Interested parties must rely solely on their own enquiries.