


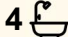

1120 Greendale Road, Greendale

St Mark's, Greendale - A Rare Blacket Masterpiece

Nestled in the tranquil foothills of the Blue Mountains and overlooking the picturesque Nepean River, St Mark's Church stands as an extraordinary testament to Australia's colonial heritage. Originally built to serve the once-thriving farming community of Greendale, this remarkable property now presents a once-in-a-generation opportunity to own a beautifully restored piece of history.

Designed by the renowned colonial architect Edmund Thomas Blacket, celebrated for iconic works such as St Andrew's Cathedral and University of Sydney, St Mark's is an exceptional example of Victorian Gothic Revival architecture. Constructed between 1848 and 1849, the church reflects Blacket's distinctive style and enduring craftsmanship.

The original structure retains many of its defining architectural features, including elegant lancet headed windows along the nave, a striking trio of windows at the eastern end, and a stone belfry crowning the western gable. The central entrance is framed by a charming gable roofed porch, creating a timeless and evocative facade.

4  4  6 

FOR SALE
\$2,999,999 - \$3,200,000

VIEW
By Appointment

AGENTS
Daniel Ritchie
0498 558 792
daniel.ritchie@ljhooker.com.au

Daniel Ritchie
0498 558 792
daniel.ritchie@ljhooker.com.au

AGENCY
LJ Hooker Bringelly
(02) 4655 2111

All information contained therein is gathered from relevant third parties sources.
We cannot guarantee or give any warranty about the information provided.
Interested parties must rely solely on their own enquiries.

 **LJ Hooker**

Set on approximately 1.5 acres of land, the property has been thoughtfully and meticulously maintained by the same family for over 40 years. During this time, the former church has been carefully adapted into a unique private residence while preserving its historic character and architectural integrity.

Enhancements to the property include the addition of dormer windows with scalloped bargeboards, a south facing verandah, and a connected studio building. Further improvements include landscaped grounds, walls and fencing, a freestanding gable roofed garage, an in ground swimming pool, and additional outbuildings. Internally, the residence has been sympathetically transformed with the addition of a second floor, thoughtfully designed living spaces, and modern kitchen and bathroom facilities, blending historic charm with contemporary comfort.

St Mark's is deeply woven into the history of Greendale. The land originally formed part of a grant to Ellis Bent in 1811. The church and its adjoining cemetery were consecrated on 12 November 1849 by William Broughton. The first service followed on 9 February 1850, serving a thriving agricultural settlement that once supported more than 200 residents.

Over time, events such as widespread wheat rust, a devastating cyclone in 1903, and the gradual decline of the village led to the closure of the church as a place of worship in 1929. While the surrounding township faded into history, St Mark's remained, standing as the enduring heart of Greendale's past.

Today, after years of dedicated restoration, this exceptionally rare Blacket designed landmark has been revitalised for modern living while honouring its remarkable heritage.

Rich in history, architectural significance, and rural charm, St Mark's offers a truly unique opportunity to secure a historic Australian treasure, ready to begin its next chapter for generations to come.

Beyond its remarkable heritage and architectural significance, St Mark's presents a rare opportunity for a variety of lifestyle or boutique hospitality ventures. With its expansive grounds, breathtaking historic character, and peaceful rural setting, the property is ideally suited for transformation into an exclusive boutique bed and breakfast, luxury country retreat, or intimate wedding and events venue (subject to relevant approvals).

The unique Gothic architecture, soaring interiors, and beautifully landscaped surroundings create an unforgettable setting for weddings, private celebrations, and special events. Guests and visitors would be immersed in the property's rich history and serene natural environment, offering a truly distinctive experience rarely found within the Blue Mountains foothills.

Properties of this calibre, combining heritage significance, architectural pedigree, and lifestyle or business potential, are exceptionally rare. St Mark's offers the opportunity not only to own a remarkable residence designed by Edmund Thomas Blacket, but also to create a memorable destination where history, hospitality, and celebration come together.

Disclaimer: All information contained herein is true and correct to the best of our ability; however, we encourage all interested parties to carry out their own enquiries at all times.

MORE DETAILS

Property ID 20J1P
Property Type House
Land Area 4354 m2

Daniel Ritchie 0498 558 792

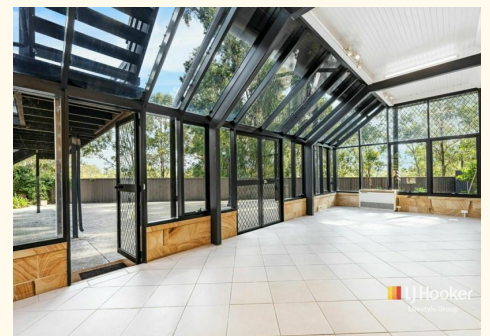
Sales & Marketing | daniel.ritchie@ljhooker.com.au

Daniel Ritchie 0498 558 792

Sales & Marketing | daniel.ritchie@ljhooker.com.au

LJ Hooker Bringelly (02) 4655 2111

BRINGELLY NSW 2556,
bringelly.ljhooker.com.au | camden@ljhooker.com.au



All information contained therein is gathered from relevant third parties sources.
We cannot guarantee or give any warranty about the information provided.
Interested parties must rely solely on their own enquiries.