



19A Illawong Crescent, Greenacre

Modern Family Living with Space, Comfort & Convenience in a Whisper Quiet Location


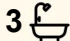
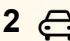
Beautifully presented and thoughtfully designed, this impressive two-storey semi-detached residence delivers an exceptional standard of living with generous proportions, quality finishes, and a layout created for both relaxed family living and effortless entertaining.

Showcasing a seamless blend of space, natural light, and contemporary style, this architecturally designed home offers a superb indoor/outdoor lifestyle with multiple living areas and expansive entertaining spaces. Perfectly positioned in a quiet cul-de-sac, the property is conveniently located close to reputable schools, Chullora Marketplace, transport options, and local sporting facilities.

Property Features:

- Striking architectural design with premium finishes throughout
- Flexible and functional floor plan catering to modern family needs
- Solid double brick construction
- Four oversized bedrooms, all with built-in wardrobes
- Master suite featuring ensuite, walk-in robe, private veranda access, and impressive district views

All information contained therein is gathered from relevant third parties sources. We cannot guarantee or give any warranty about the information provided. Interested parties must rely solely on their own enquiries.

4  3  2 

FOR SALE

For Sale: \$1,600,000 - \$1,650,000

VIEW

Sat 27th Jun @ 11:00AM - 11:30AM

AGENCY

LJ Hooker Liverpool
02 9708 2333

 LJ Hooker

- Three stylish bathrooms and three toilets for added convenience
- Beautifully tiled interiors with quality finishes and elegant bullnose staircase detailing
- Sun-filled family living area flowing effortlessly throughout the home
- Spacious front and rear verandas ideal for entertaining or relaxing outdoors
- Low-maintenance landscaped yard offering privacy and convenience
- Secure living with intercom system and security cameras
- Wrought iron fencing adding timeless street appeal
- Lock-up garage with automatic entry and internal access

Set in a peaceful cul-de-sac location, this outstanding residence offers the perfect combination of luxury, comfort, and convenience for families seeking a home of distinction.

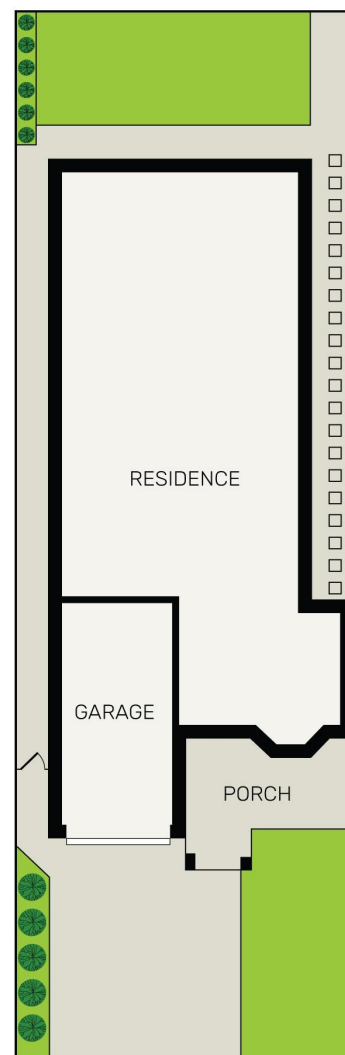
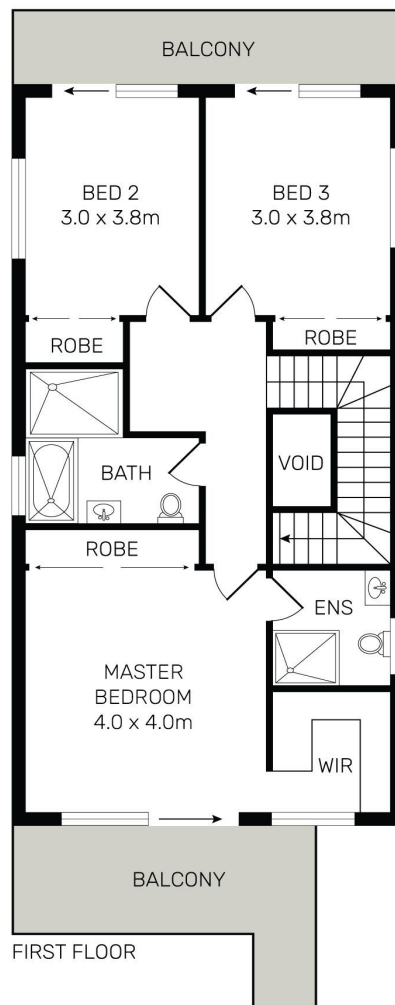
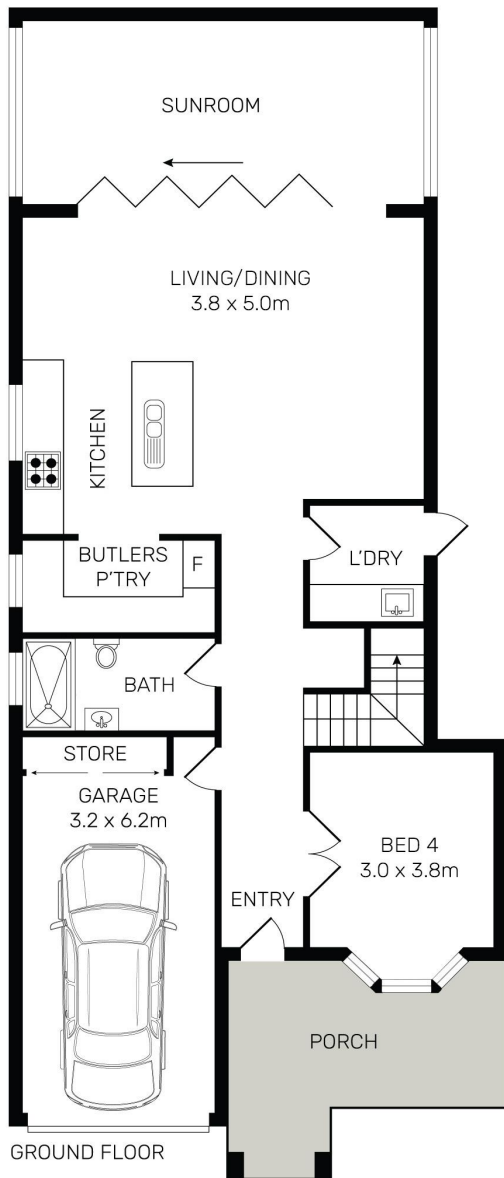
DISCLAIMER: While LJ Hooker Bankstown | LJ Hooker Liverpool have taken all care in preparing this information and used their best endeavours to ensure that the information contained is true and accurate, we accept no responsibility and disclaim all liability in respect of any errors, inaccuracies or misstatements contained herein. LJ Hooker Bankstown | LJ Hooker Liverpool urges prospective purchasers to make their own inquiries to verify the information contained herein.

MORE DETAILS

Property ID	UDJ0W
Property Type	DuplexSemi-detached
Including	Air Conditioning Balcony Dishwasher Built-in-Robes

LJ Hooker Liverpool 02 9708 2333
 312 Macquarie Street, LIVERPOOL NSW 2170
liverpool.ljhooker.com.au | liverpool@ljhooker.com.au





All information contained herein is gathered from all sources we believe to be reliable. However we cannot guarantee its accuracy and interested parties should rely on their own enquiries.



19A Illawong Crescent, Greenacre

All information contained therein is gathered from relevant third parties sources. We cannot guarantee or give any warranty about the information provided. Interested parties must rely solely on their own enquiries.

