



14A Macquarie Street, Greenacre


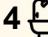

SOLD by Muhammad Sarmini

SOLD by Muhammad Sarmini - Suburb Record !

Magnificent Brand New Masterpiece, In-ground Pool, 390sqm

Step into an elegant oasis of unrivalled luxury with this brand-new architecturally designed Duplex, perfectly positioned in a sought after location. From the statement pivot timber door, brilliant curved features and generous designer interiors to the exquisite finishes throughout plus huge basement, every detail exudes sophistication. Superbly crafted for a relaxed family lifestyle, showcasing multiple entertaining zones while enjoying a desirable sundrenched north east facing aspect, a stunning mosaic-tiled pool and spa and seamless indoor-outdoor flow, creating the ultimate family haven of style, comfort and functionality that redefines modern luxury. This premium residence offers prestige and convenience that is sure to impress all in one remarkable package.

- Striking facade, commercial windows, large pivot timber door upon entry with soaring ceiling leading to spacious formal lounge area, complete with gorgeous fireplace, plus feature staircase with Led lighting leading study area and balcony
- Generous open plan living with fireplace, kitchen and dining areas including LED feature lighting with recessed ceiling over lounge, all leading to pleasant outdoor alfresco area and additional

5  4  6 

FOR SALE

SOLD | Suburb Record!

AGENTS

Muhammad Sarmini
0403 750 917
muhammad@ljhbl.com.au

AGENCY

LJ Hooker Belmore
(02) 9750 9244

All information contained therein is gathered from relevant third parties sources.
We cannot guarantee or give any warranty about the information provided.
Interested parties must rely solely on their own enquiries.

 **LJ Hooker**

- entertaining cabana overlooking in-ground pool
- Four (4) spacious bedrooms upstairs with custom joinery built-in wardrobes, oversized master bedroom includes recessed feature ceiling, generous plush ensuite and two spacious walk-in robes
- Versatile 5th bedroom downstairs with built-in wardrobe and ensuite, ideal for additional family/guest accommodation or large home office/additional study
- Stunning designer Taj Mahal stone kitchen with quality appliances, generous sized island breakfast bar, integrated fridge and pit gas cooktop, butler's pantry including fully integrated dishwasher, oven and additional gas cooktop
- Four (4) luxurious fully tiled hotel style bathrooms, Taj Mahal stone top vanities, frameless glass finishes, huge main bathroom includes separate bathtub, dual showers and double vanity, fourth WC in separate powder room downstairs
- Stylish internal laundry with ample cupboard and bench space plus external access
- Quality porcelain tiled flooring on lower level and herringbone timber floors on upper level, venetian finish walls, architecturally designed chandeliers and pendants, security screens and skylights
- Ducted Daikin zoned air-conditioning, CCTV security and alarm system, brilliant LED lighting and Taj Mahal stone finishes with curved finishes throughout both levels
- Covered outdoor alfresco area and additional fully equipped Cabana complete with kitchenette including gas cooktop and bar fridge, plus adjoining separate fifth WC and shower, perfect for convenient access from pool or while entertaining
- Sparkling in-ground mosaic tiled pool and relaxing spa surrounded by travertine tiles and frameless glass finishes
- Beautifully landscaped low maintenance gardens and child friendly rear yard
- Deep driveway leading to huge remote basement lock-up garage to accommodate multiple vehicles plus storage area with internal access and additional car spaces
- Generous parcel of land 390sqm approx.

Enjoy this lavish lifestyle prominently situated within close proximity to nearby amenities including 1.7km to Wiley Park train station with benefits of upcoming Sydney Metro upgrades, 1.5km to Coles Greenacre and main shopping hub with vibrant array of cafes and restaurants, 2.9km to Chullora Market Place, 250m to recreational parklands such as Parry Park and 1.4km to Greenacre Splash Park, local public and private schools from 1km and easy access to M4 and M5 motorways!

Address: 14A Macquarie Street, Greenacre
 For Sale: SOLD for Suburb Record!
 Contact: Muhammad Sarmini 0403 750 917

MORE DETAILS

Property ID 9ADHRQ
Property Type DuplexSemi-detached
Land Area 390 m2
Including Study
Air Conditioning
Ducted Cooling
Ducted Heating
Toilets (5)
Alarm
Intercom
Pool
Spa
Dishwasher
Outdoor Entertaining
Floorboards
Built-in-Robes
Secure Parking
Remote Garage

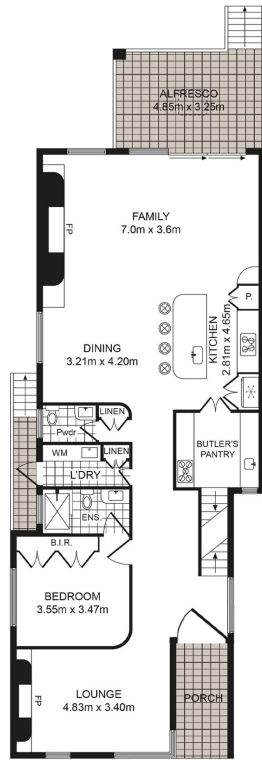
Muhammad Sarmini 0403 750 917

Director | Selling Licensee-in-Charge | muhammad@ljhbl.com.au

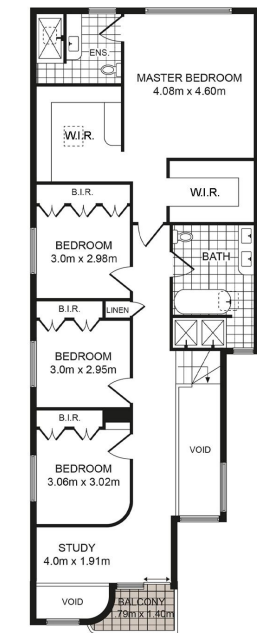
LJ Hooker Belmore (02) 9750 9244

435-437 Burwood Road, BELMORE NSW 2192
belmore.ljhooker.com.au | info@ljhbl.com.au





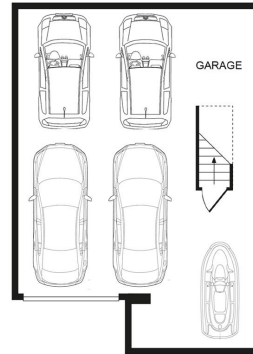
GROUND FLOOR



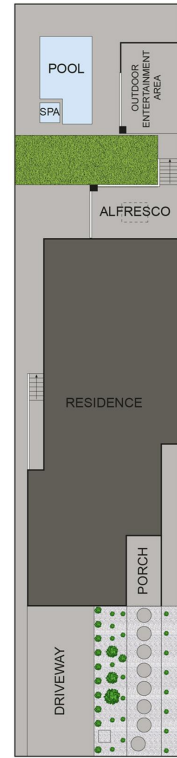
FIRST FLOOR



BASEMENT



GARAGE



SITE PLAN (NOT TO SCALE)

14 Macquarie St, Greenacre NSW 2190

Whilst every attempt has been made to ensure the accuracy of the floor plan contained here, measurements of doors, windows, room and any other items are approximate and no responsibility is taken for any error, omission or mis-statement. This plan is for illustration purpose only and should be used as such by any prospective purchaser. The service, systems and appliances shown have not been tested and no guarantee as to their operability or efficiency can be given.

LJ Hooker Belmore