



5 Dolphin Close, Green Valley


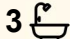
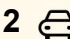
MAGNIFICENT RESIDENCE, 981m2 BLOCK

"The Chase Estate" - Superbly positioned in whisper quiet, child friendly cul-de-sac, surrounded by stunning homes. This beautifully maintained, oversized, very well built Clarendon home definitely ticks all the boxes.

The reserve is set to sell with a 12 week settlement. The photos do all the talking. Owners are downsizing, this is an amazing opportunity, that absolutely must be inspected.

The brilliant floor plan boasts, potential for in-law accommodation. Lovely formal and multiple casual/entertaining areas for all to enjoy (See floor plan), Solid timber kitchen, family and rumpus rooms each enjoy a fantastic outlook of the 11m x 5.5m high clearance undercover party area with bbq, fully paved. Sparkling in-ground pool and professionally, retained, level, low maintenance designed landscaping is breathtaking with multiple zones to relax and enjoy. Ideal for all seasons.

All family members and guests are sure to be impressed this good looking family home offers. The lengthy driveway also features an extra large side vehicle, private area suitable for several vehicles.

4  3  2 

FOR SALE
Contact Agent

AGENTS

Graham Ball
0412 778 855
graham.ball@ljhooker.com.au

Dane Ball
0450 028 635
dane.ball@ljhooker.com.au

AGENCY

LJ Hooker Edensor Park | Green Valley
(02) 9823 8888

All information contained therein is gathered from relevant third parties sources.
We cannot guarantee or give any warranty about the information provided.
Interested parties must rely solely on their own enquiries.

 **LJ Hooker**

OTHER BENEFITS:

- 12 week settlement
- Insulated walls and ceilings
- Spa bath, main bathroom
- European appliances
- Energy efficient, solar power 32 panels
- Ideal for guests/in-laws.

MORE DETAILS

Property ID CKWHUC
Property Type House
Land Area 981 m2

Graham Ball 0412 778 855

Senior Sales Executive | graham.ball@ljhooker.com.au

Dane Ball 0450 028 635

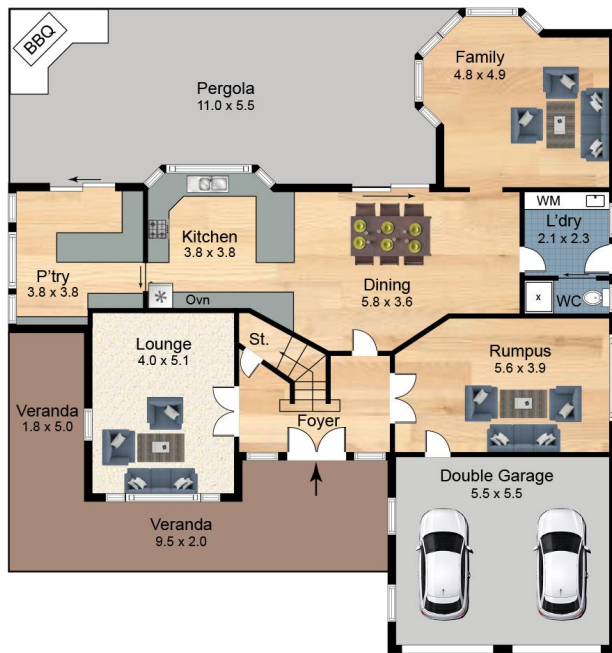
Sales Associate | dane.ball@ljhooker.com.au

LJ Hooker Edensor Park | Green Valley (02) 9823 8888

Shop 8, 207-215 Edensor Road, Edensor Park Plaza, EDENSOR PARK NSW 2176

edensorpark.ljhooker.com.au | edensorpark@ljhooker.com.au





Ground Floor



First Floor



5 Dolphin Close Green Valley 2168

Scales in metres. Indicative only. Dimensions are approximate. All information contained here in is gathered from sources we believe to be reliable. However we cannot guarantee its accuracy and interested persons should rely on their own enquires.

 LJ Hooker