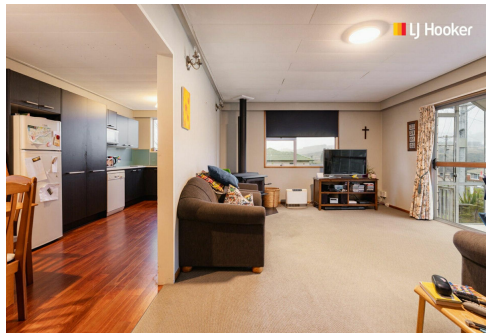
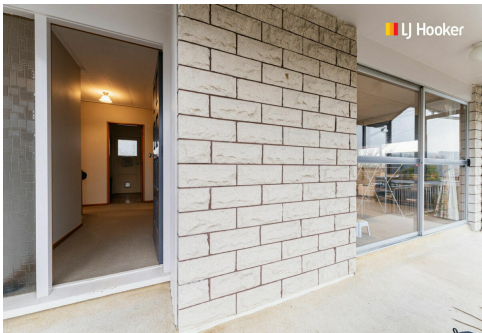


SOLD



Green Island, 50 Koremata Street

Solid, Sunny & Spacious

Positioned in one of Green Island's best streets, this permanent materials 1970's property is beautifully orientated for all-day sun and would make a fantastic first home. The living space is adequately heated by a wood burner, that flows through to the rest of interior, and the adjoining conservatory provides a sunny location for a relaxing afternoon cuppa. There's 3 bedrooms upstairs and younger families will appreciate the separate bath & shower, and separate toilet. Internal access to the basement level offers a further utility room plus garaging for convenience and security, meaning this property exhibits plenty of room for discerning buyers. Sure to suit many, and situated on a quiet no-exit street, there is a tranquil and peaceful environment on offer while only being a short 10min drive to the city centre, with local amenities in Green Island being even closer. You also have the ability to cosmetically enhance this property if you wish, otherwise it's ready to move into straight away.

3 

1 

1 

For Sale

Enquiries Over \$549,000

View

ljhooker.co.nz/3MHCGDS

Contact

Jason Hynes

021 225 5527

Jason@ljhdunedin.co.nz

Lawrence Schaumann

027 418 6204

lawrence@ljhdunedin.co.nz

More About this Property

Property ID 3MHCGDS

Property Type House

Land Area 622 m²

Licensed Real Estate Agents (REAA2008)

Jason Hynes

Managing Director / Licensee / Auctioneer | Jason@ljhdunedin.co.nz

Lawrence Schaumann

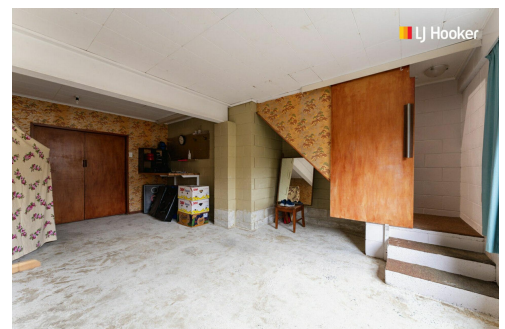
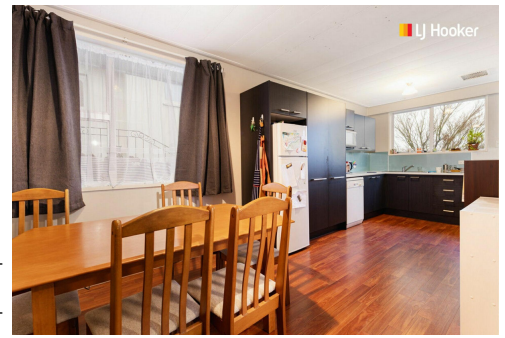
Licensee | lawrence@ljhdunedin.co.nz

LJ Hooker Dunedin (03) 470 1370

Wayne Graham Realty Ltd

63 Musselburgh Rise, DUNEDIN 9013

dunedin.ljhooker.co.nz | dunedin@ljhdunedin.co.nz



Disclaimer: All information contained therein is gathered from relevant third parties sources. We cannot guarantee or give any warranty about the information provided. Interested parties must rely solely on their own enquiries.

LJ Hooker Dunedin
(03) 470 1370

Wayne Graham Realty Ltd