




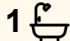
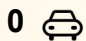
22/14 Priest Circuit, Gray

SOLD

Successfully sold off-market to a qualified buyer, this property attracted strong interest from our database and sold prior to any public advertising. A great result for both seller and purchaser, highlighting continued demand in this suburb.

Looking for the same results?

Contact - Riley Loy 0422 729 288 or Rloy@ljhookerdarwin.com.au

2  1  0 

FOR SALE

\$330,000

AGENTS

Riley Loy
0422 729 288
rloy@ljhookerdarwin.com.au

AGENCY

LJ Hooker Darwin
(08) 8924 0900

All information contained therein is gathered from relevant third parties sources.
We cannot guarantee or give any warranty about the information provided.
Interested parties must rely solely on their own enquiries.

 **LJ Hooker**

MORE DETAILS

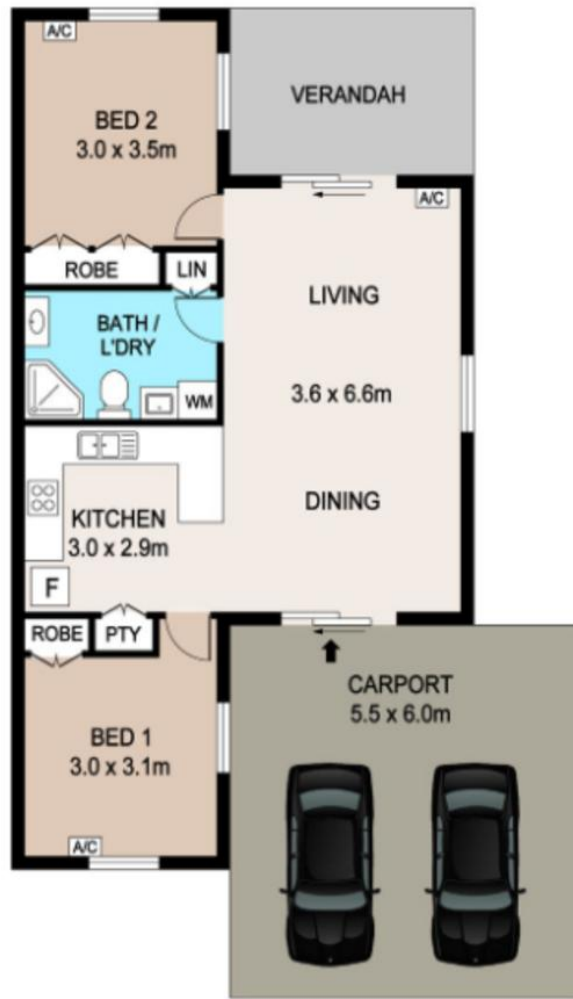
Property ID 5E38F2X
Property Type Unit
Land Area 238 m2
Including Ensuite
Air Conditioning
Courtyard
Liveability

Riley Loy 0422 729 288
Sales Representative | rloy@ljhookerdarwin.com.au

LJ Hooker Darwin (08) 8924 0900
Shop 1/25 Parap Road, PARAP NT 0820
darwin.ljhooker.com.au | reception@ljhookerdarwin.com.au



All information contained therein is gathered from relevant third parties sources.
We cannot guarantee or give any warranty about the information provided.
Interested parties must rely solely on their own enquiries.



22/14 PRIEST CIRCUIT, GRAY

DISCLAIMER

PLANS SHOWN ARE FOR MARKETING PURPOSES ONLY. ALL DIMENSIONS ARE APPROXIMATE AND NOT TO SCALE. THEY ARE SUBJECT TO ERRORS AND INACCURACIES AND NO LIABILITY WILL BE ACCEPTED. INTERESTED PARTIES SHOULD MAKE THEIR OWN ENQUIRIES.