

## Grasmere, 17 Yewens Circuit

### 1 Acre In Exclusive Grasmere Estate

Nestled in a private cul-de-sac location, is this near new double storey Hamptons inspired family home on a spacious 4,310sqm of land in the beautiful suburb of Grasmere.

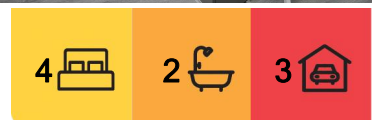
Located within a short drive to Camden's CBD with schools, shops and the finest restaurants and cafes right at your doorstep, gorgeous parks, bike trails and picnic areas.

This immaculately presented home offers:

- Formal lounge upon entry
- Spacious media room or fifth bedroom
- Combined living and dining space
- Downstairs powder room



**Disclaimer:** All information contained therein is gathered from relevant third parties sources. We cannot guarantee or give any warranty about the information provided. Interested parties must rely solely on their own enquiries.



**For Sale**

Property Showcase

**View**

By Appointment

**Contact**

**Chelsea Mifsud**

0429 628 005

cmifsud.leppington@ljhooker.com.au

**Anthony Bucca**

0418 972 882

abucca.leppington@ljhooker.com.au

**LJ Hooker Leppington | Austral**  
**(02) 9606 4311**



- Large modern kitchen with 40mm stone bench tops, gas cooking, quality stainless steel appliances and large walk-in pantry
- Master bedroom with private balcony and walk-in robe
- Bathrooms featuring free standing bath and shower
- Three bedrooms offering built-in wardrobes
- Large outdoor entertaining area overlooking spacious and level yard
- Triple automatic garage with drive-thru access
- Features include Intercom, alarm, ducted air conditioning
- Town water, gas, NBN & sewer

Looking for the acreage lifestyle with a modern twist, this home is for you.

Contact LJ Hooker Leppington today for further details!

Disclaimer: The above information has been furnished to LJ Hooker Leppington | Austral by the vendor/vendors legal representative. We have not verified whether or not that information is accurate, and do not have any belief one way or the other in its accuracy. LJ Hooker Leppington | Austral do not accept any responsibility to any person for its accuracy and do no more than pass it on. All interested parties should make and rely upon their own enquiries in order to determine whether or not this information is, in fact, accurate.

## More About this Property

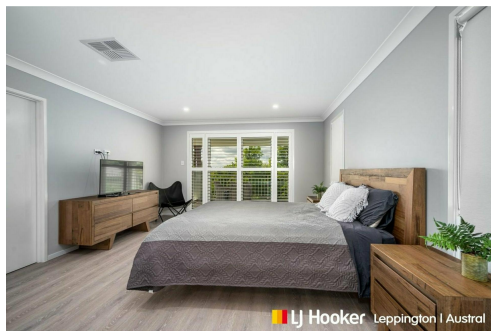
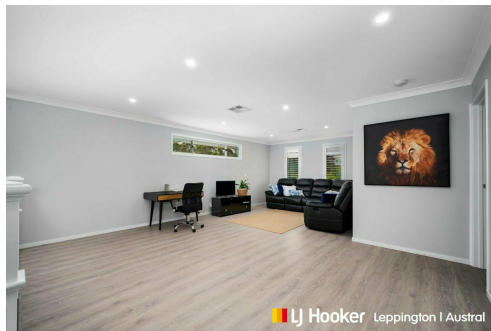
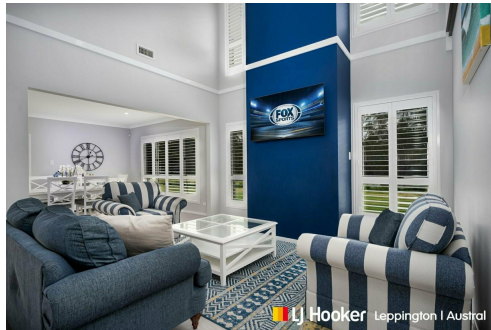
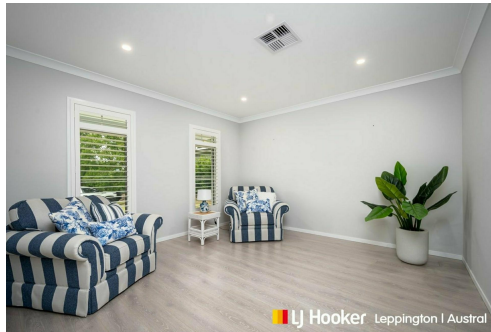
Property ID	YDRHCV
Property Type	House
Land Area	4300 m²
Including	Ensuite Alarm Intercom Dishwasher Outdoor Entertaining Built-in-Robes Remote Garage

**Chelsea Mifsud**  
Licensed Sales Agent | [cmifsud.leppington@ljhooker.com.au](mailto:cmifsud.leppington@ljhooker.com.au)  
**Anthony Bucca**  
Sales Manager | [abucca.leppington@ljhooker.com.au](mailto:abucca.leppington@ljhooker.com.au)

**LJ Hooker Leppington | Austral (02) 9606 4311**  
1393 Camden Valley Way, LEPPINGTON NSW 2179  
[leppington.ljhooker.com.au](http://leppington.ljhooker.com.au) | [leppington@ljhooker.com.au](mailto:leppington@ljhooker.com.au)



**Disclaimer:** All information contained therein is gathered from relevant third parties sources. We cannot guarantee or give any warranty about the information provided. Interested parties must rely solely on their own enquiries.



**LJ Hooker Leppington | Austral**  
**(02) 9606 4311**



**LJ Hooker**  
Leppington

## 17 Yewens Circuit, Grassmere

Floor Plan produced by Grub Media PH 0408 082 075

DISCLAIMER: THIS IS FOR ILLUSTRATIVE PURPOSES ONLY. ALL DIMENSIONS ARE APPROXIMATE AND DOES NOT CONSTITUTE A LEGAL DOCUMENT